

Form No.
909859
Revision B

1660 & 1660HD

Front/Rear Unload Forage Boxes



PARTS MANUAL

GEHL® AGRICULTURE

Introduction

When ordering service parts, specify the correct part number, full description, quantity required, the unit model number and serial number.

The model number and serial number for this unit are on a decal located on the front of the unloading unit near the PTO shaft. "Right" and "left" are determined from a position standing at the rear of the unit and looking toward the direction of travel. From this position, the cross conveyor is on the front and discharges from the "left" side.

GEHL Company reserves the right to make changes or improvements in the design or construction of any part of the unit without incurring the obligation to install such changes on any previously delivered units.

NOTE: *On original tire replacement, Company policy prohibits the sale of replacement tires for all GEHL machinery. Replacement wheel sets are available and tire size information is called out with the wheel sets to facilitate replacement tire selection. ALL REPLACEMENT TIRES MUST BE PURCHASED LOCALLY.*

Refer to the abbreviations table located on this page for the various fastener descriptions. Standard attaching hardware torque values are also provided on the inside back cover.

In the exploded view parts list, Reference Numbers may have additional information following the Reference Number.

Also, a number inside a hexagon will be the torque value required, in foot-pounds, on the associated Reference Number. Items shown in the parts list that do not have Reference Numbers are shown for reference purposes only and are NOT available for purchase.

Unless otherwise specified, all cap screws or bolts are Grade 5, cadmium plated; hexagon nuts for Grade 5 screws or bolts are Grade B; hexagon nuts for other screws or bolts are Grade A.

NOTE: *The following abbreviations may be used herein:*

A/R	- As Required
ASSD	- Assembled
ASSY	- Assembly
CB	- Carriage Bolt
CCW	- Counterclockwise
CP	- Cotter Pin
CS	- Cap Screw (Hexagon Head)
CTR	- Center
CW	- Clockwise
DEG	- Degree
DIA	- Diameter
FCS	- Flanged Cap Screw
FHMS	- Flat Head Machine Screw
FL	- Flanged
FLN	- Flanged Lock Nut (Hexagon)
FLS	- Flanged Lock Screw (Hexagon)
FW	- Flat Washer
GA	- Gauge
GR	- Grade
HD	- Hard or Head
HN	- Hex Nut
INCL	- Includes
JT	- Joint
LG	- Large
LN	- Lock Nut
LW	- Lock Washer
LT	- Left
M	- Metric
MM/mm	- Millimeter
NF	- National Fine
PB	- Plow Bolt
PTO	- Power Take Off
RHMS	- Round Head Machine Screw
RPM	- Revolutions Per Minute
RT	- Right
SERR	- Serrated
SHCS	- Socket Head Cap Screw
SHSS	- Socket Head Set Screw
SN	- Serial Number or Slotted Nut
SQ	- Square
T	- Tooth or Teeth
TFS	- Thread Forming Screw
THMS	- Truss Head Machine Screw
THRD	- Thread
WLDMT	- Weldment
#	- Number
	- Torque required in foot-pounds

TABLE OF CONTENTS

Introduction	Inside Front Cover
Decal Locations	2-5
Beaters & Main Apron Drive	6-7
Cross Apron & Drive	8-9
Shields, Beater Clutch Belt Drive	10-11
Cross Conveyor Clutch - Belt Drive	12-13
Rear Unload Assembly	14-20
Box Components	21-25
Gearboxes	26-27
Housing Components	28-29
Lights	30
PTO Parts	31
Tie-Down Kit	32
Optional 12" Extension	33
Optional Hydraulic Drive	34
Alphabetical Index	35
Numerical Index	36-39
Notes	40
Standard Hardware Torque Specifications	Inside Back Cover

DECAL LOCATIONS

GENERAL INFORMATION

Decal location information is provided to assist in the proper selection and application of new decals, in the event the original decals become damaged or the machine is repainted. Refer to the listing for the illustration reference number, part number, description and quantity of each decal provided in the kit. Refer to the appropriate illustrations for replacement locations.

NOTE: Refer to the Operator's Manual SAFETY chapter for specific information provided on the various safety decals furnished in the decal kit(s).

To ensure proper selection of the correct replacement decals, compare all of the various closeup location photographs to your machine before starting to refinish the unit. Then circle each pictured decal (on or otherwise applicable to your machine) while checking off its part number in the listing. After you have verified all the decals needed for replacement, place any unneeded decals aside for disposal.

NEW DECAL APPLICATION

Surfaces MUST be free from dirt, dust, grease and other foreign material before applying the new decal. To apply, remove the smaller portion of the decal backing paper and apply this part of the exposed adhesive backing to the clean surface while maintaining proper position and alignment. Peel the other portion of the backing paper off slowly while applying hand pressure to smooth out decal surface.



CAUTION

ALWAYS observe safety precautions on decals. If decals become damaged, or if the unit is repainted, replace the decals. If repainting, BE SURE that ALL decals from kits that apply to your machine are affixed to your unit.

PAINT NOTICE

Use this list to order paint for refinishing:

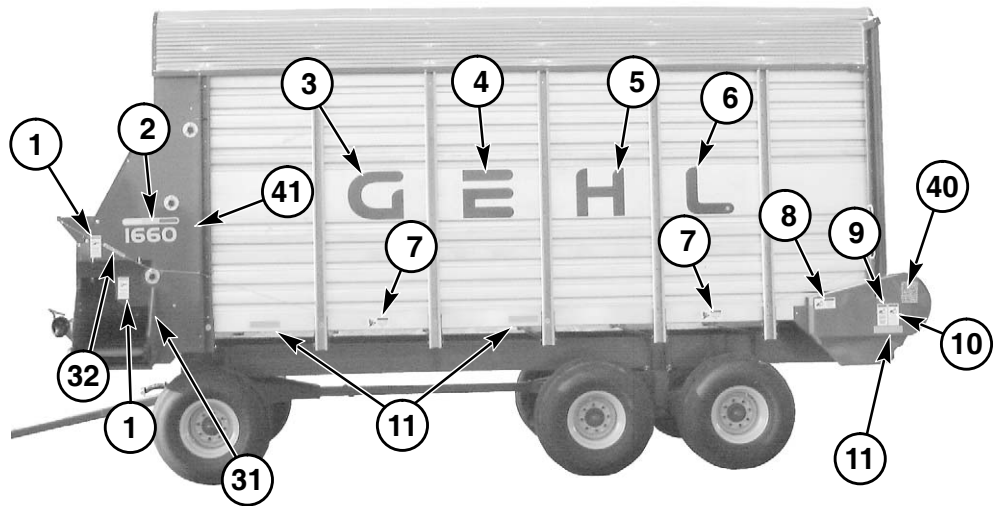
906315	One Gal. AG Red
902872	One Qt. Light Grey
906316	6 (12 oz. Spray Cans) AG Red
902874	6 (12 oz. Spray Cans) Light Grey

The decal set number for the 1660 Forage Box is 170507. The decal set number for the 1660HD Forage Box is 170543. The sets includes the following:

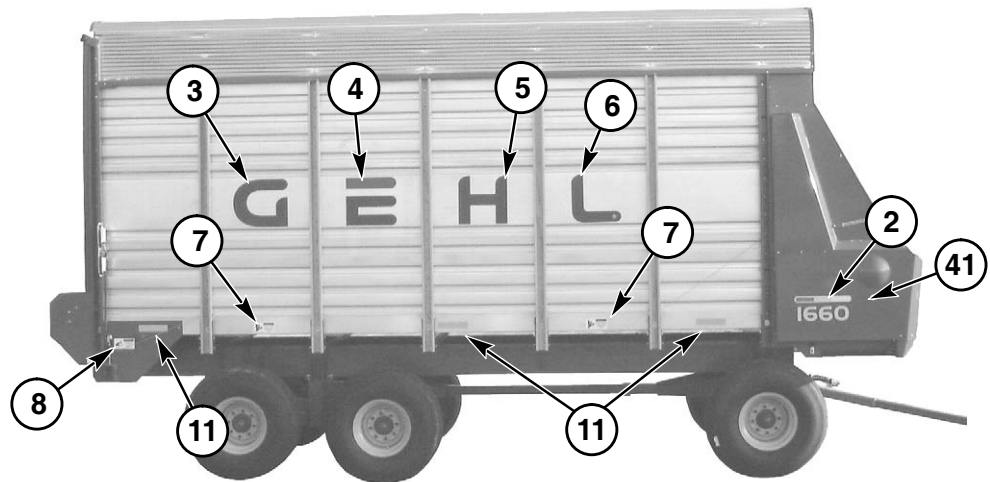
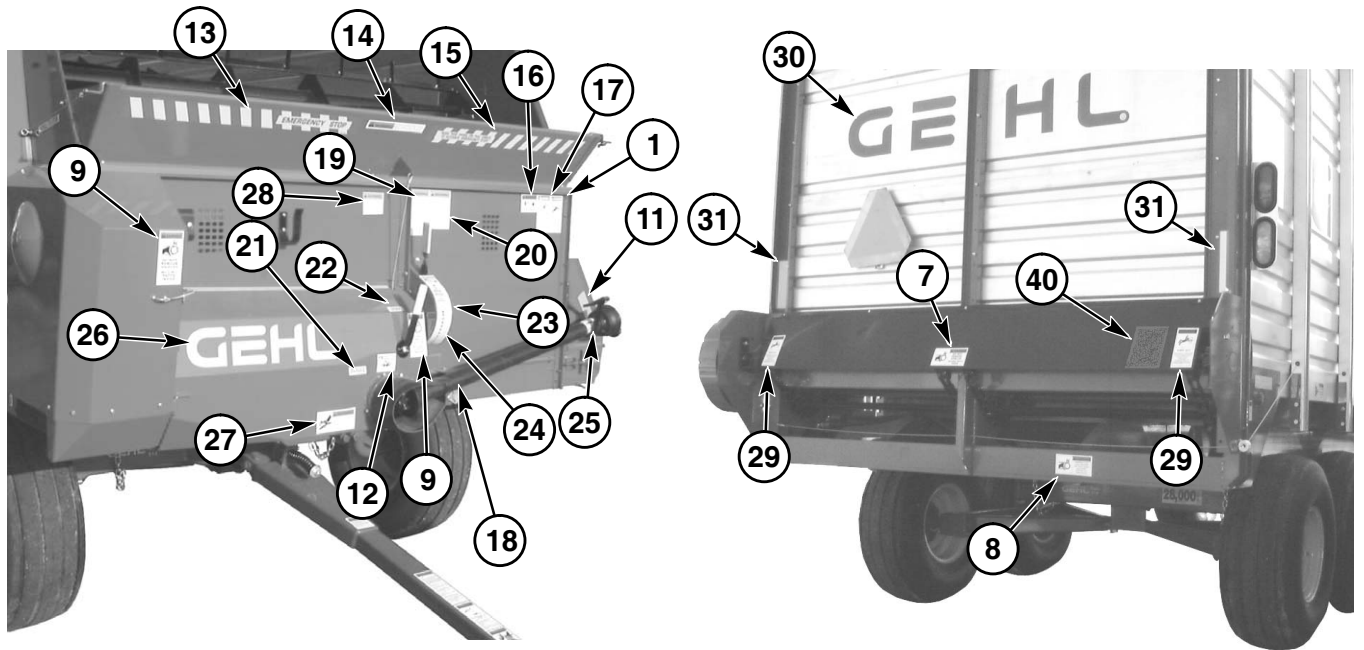
Ref. Part

No.	No.	Description & Quantity
1	091050	DANGER - Stay Clear (3 Places)
2	170318	1660 Label (2 Places)
3	094920	Decal - "G" (2 Places)*
4	094921	Decal - "E" (2 Places)*
5	094922	Decal - "H" (2 Places)*
6	094923	Decal - "L" (2 Places)*
7	093444	WARNING - Moving Parts (5 Places)
8	170537	WARNING - Emergency Stop (3 Places)
9	163957	WARNING - Do Not Remove (3 Places)
10	170534	WARNING - Do Not Hand Clean
11	145217	Amber Reflector (7 Places)
12	093653	DANGER - Rotating Driveline
13	170527	Emergency Stop
14	170526	WARNING - To Prevent Serious Injury
15	170525	Push This Panel
16	170531	WARNING - Keep Children Away
17	093202	DANGER - Stay Clear of Power Lines
18	143007	DANGER - Shield Missing
19	094373	WARNING - Before Inspecting
20	093367	WARNING - Read Operator's Manual
21	170523	Decal - Disengage
22	170521	Decal - Engage
23	170530	Decal - Clean Out
24	170524	Decal - Beater Engage/Disengage
25	091444	DANGER - Rotating Driveline
26	094914	Decal - GEHL
27	170532	WARNING - Stay Clear of Hydraulic Lines
28	170538	WARNING - Remain in Tractor
29	170539	DANGER - Keep Out (2 Places)
30	119661	Decal - GEHL
31	145216	Red Reflector (3 Places) w/ conveyor ext.
32	119548	Decal - Pull to Stop (2 Places)
33	170529	DANGER - Never Enter (5 Places)
34	170528	Decal - Entering Forage Box
35	170520	WARNING - Do Not Operate (5 Places)
36	170541	Decal - Drive Pin Instructions (2 Places)
37	093020	Decal - Grease
38	170542	Decal - Shear Bolt
39	093366	Decal - Manual Stored Here
40	170536	Decal - Door Locks (2 Places)
41	170356	Decal - GEHL (2 Places) (HD models only)

* HD models use (two) GEHL decals (170356) in place of decal reference numbers 3-6.



(Used with extension kit)



NOTE: *This list is a repeat of the decal list on a previous page and is provided for your convenience when selecting decals from the opposite page of illustrations.*

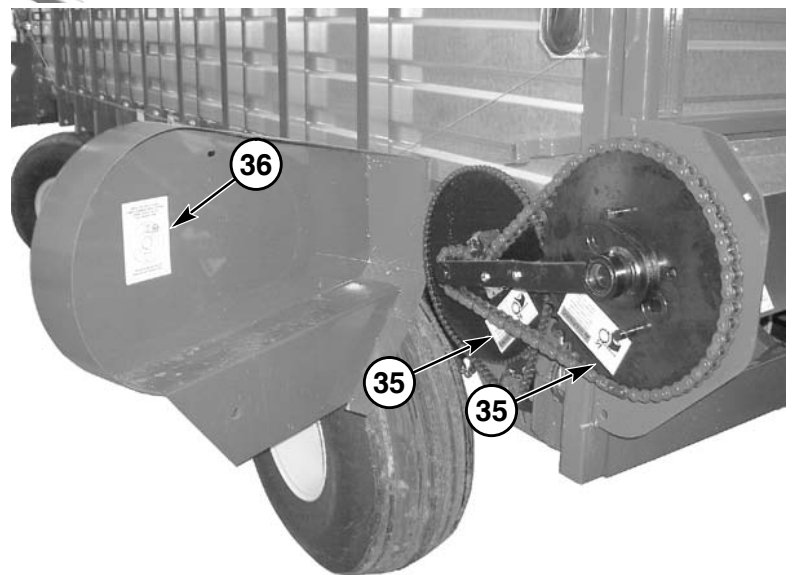
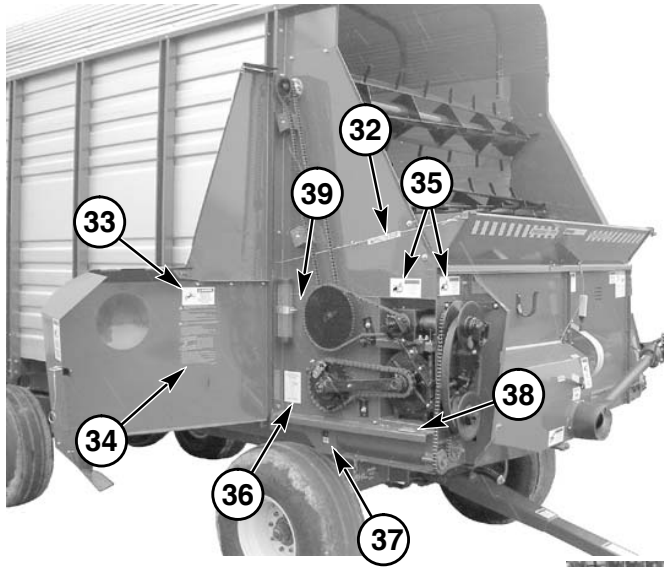
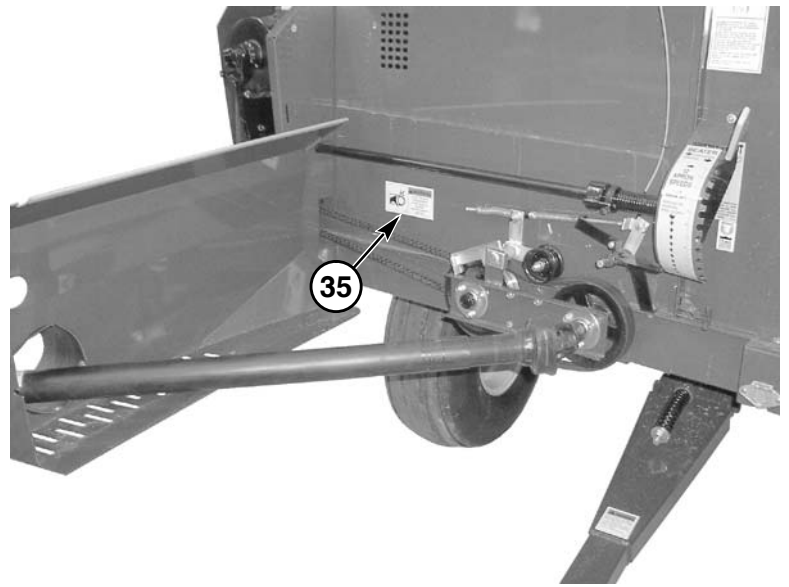
The decal set number for the 1660 Forage Box is 170507. The decal set number for the 1660HD Forage Box is 170543. The sets includes the following:

Ref. Part

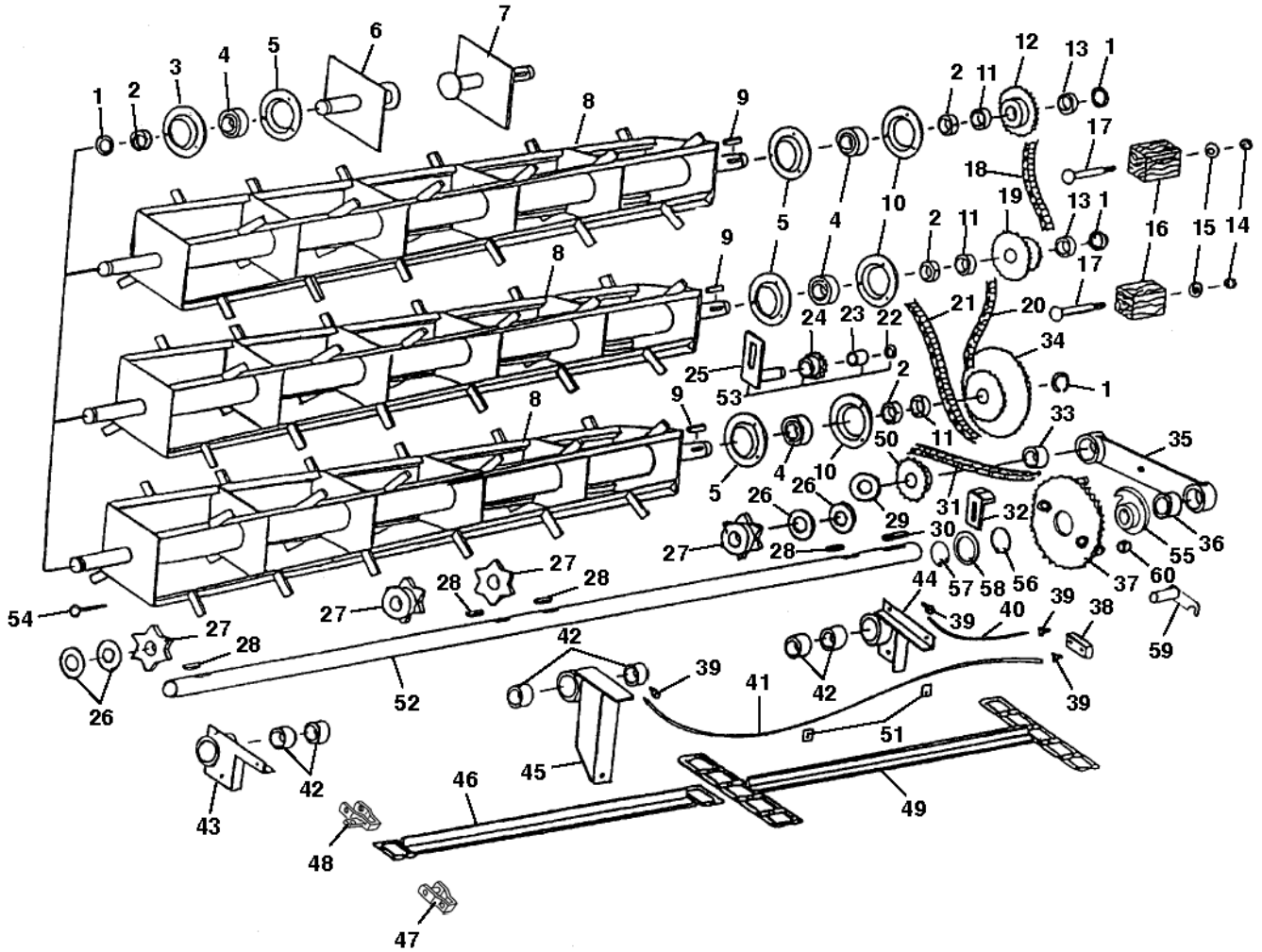
No.	No.	Description & Quantity
1	091050	DANGER - Stay Clear (3 Places)
2	170318	1660 Label (2 Places)
3	094920	Decal - "G" (2 Places)*
4	094921	Decal - "E" (2 Places)*
5	094922	Decal - "H" (2 Places)*
6	094923	Decal - "L" (2 Places)*
7	093444	WARNING - Moving Parts (5 Places)
8	170537	WARNING - Emergency Stop (3 Places)
9	163957	WARNING - Do Not Remove (3 Places)
10	170534	WARNING - Do Not Hand Clean
11	145217	Amber Reflector (7 Places)
12	093653	DANGER - Rotating Driveline
13	170527	Emergency Stop
14	170526	WARNING - To Prevent Serious Injury
15	170525	Push This Panel
16	170531	WARNING - Keep Children Away
17	093202	DANGER - Stay Clear of Power Lines

18	143007	DANGER - Shield Missing
19	094373	WARNING - Before Inspecting
20	093367	WARNING - Read Operator's Manual
21	170523	Decal - Disengage
22	170521	Decal - Engage
23	170530	Decal - Clean Out
24	170524	Decal - Beater Engage/Disengage
25	091444	DANGER - Rotating Driveline
26	094914	Decal - GEHL
27	170532	WARNING - Stay Clear of Hydraulic Lines
28	170538	WARNING - Remain in Tractor
29	170539	DANGER - Keep Out (2 Places)
30	119661	Decal - GEHL
31	145216	Red Reflector (3 Places) w/ conveyor ext.
32	119548	Decal - Pull to Stop (2 Places)
33	170529	DANGER - Never Enter (5 Places)
34	170528	Decal - Entering Forage Box
35	170520	WARNING - Do Not Operate (5 Places)
36	170541	Decal - Drive Pin Instructions (2 Places)
37	093020	Decal - Grease
38	170542	Decal - Shear Bolt
39	093366	Decal - Manual Stored Here
40	170536	Decal - Door Locks (2 Places)
41	170356	Decal - GEHL (2 Places) (HD models only)

* HD models use (two) GEHL decals (170356) in place of decal reference numbers 3-6.



1660 - BEATERS AND MAIN APRON DRIVE

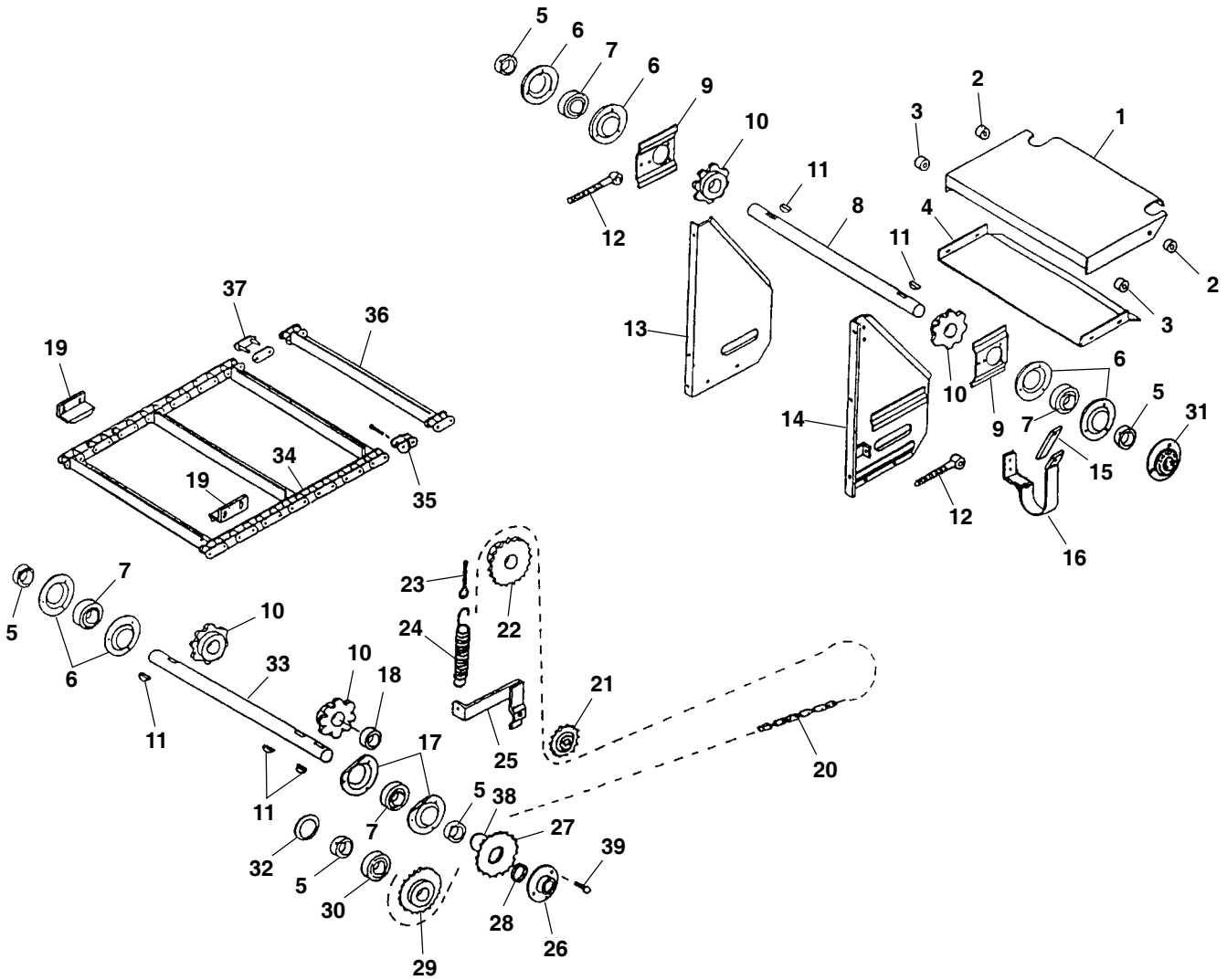


1660 - BEATERS AND MAIN APRON DRIVE

Ref. No.	Part No.	Description	Qty. Req.	Ref. No.	Part No.	Description	Qty. Req.
1	L94790	SNAP RING	6	32	166774	CHAIN TIGHTENER	1
2	520085	1.25 BEARING COLLAR	6	33	166880	BUSHING	1
3	166541	FLANGE/BEARING W/ZERK	3	34	166905	60T & 20T SPROCKET	1
4	166098	BEARING GREASEABLE TYPE	6	35	166793	DRIVE SHAFT BRACE W/O BUSHING .	1
5	H195A	BEARING FLANGE	6	36	166882	BUSHING	1
6	166669	LH BEATER STUB SHAFT	3	37	166104	SPROCKET	1
7	166676	RH BEATER STUB SHAFT	3	38	166796	GREASE LINE BRACKET	1
8	166687	BEATER	3	39	166895	STR MP 1/8-28XF TUBE 1/8	4
9	180-32147	5/16 X 1-3/8 SQUARE KEY	3	40	166798	SHORT GREASE LINE	1
10	080863	BEARING FLANGE W/ZERK 45°	3	41	166799	LONG GREASE LINE	1
11	H8224	SPACER	3	42	166884	BUSHING	6
12	166871	3RD BEATER SPROCKET 20T	1	43	166802	LH DRIVE SHAFT BRACKET	1
13	166565	SPACER	3	44	166803	RH DRIVE SHAFT BRACKET	1
14	653010	HN 3/8	1	45	166804	CENTER BEARING BRACKET	1
15	654006	FW 3/8	1	46	166189	667H PINTLE W/ATT. LINKS	1
16	166696	WOOD CHAIN TIGHTENER	2	47	152391	667H PINTLE CONNECTOR LINKS	1
17	650681	CB 3/8 X 3-3/4	2	48	152710	667H PINTLE ATT.LINK RH OR LH	1
18	170663	ROLLER CHAIN #50 X 89 LINKS	2	49	166182	667H PINTLE APRON 18'	1
19	166873	2ND BEATER SPROCKET 30T-13T	1	*	166180	667H PINTLE APRON 20'	1
20	170663	ROLLER CHAIN #50 X 89 LINKS	1	50	166834	WORM GEAR SHAFT SPROCKET	1
21	500092	ROLLER CHAIN #50 X 98 LINKS	1	*	166887	WORM GEAR SHAFT SPROCKET 11T .	1
22	166059	SNAP RING	1	51	166814	GREASE LINE CLIP	1
23	166729	CHAIN TIGHTENER BUSHING	1	52	166815	MAIN APRON DRIVE SHAFT	1
24	166154	TIGHTENER SPROCKET	1	53	166661	CHAIN TIGHTENER ASSEMBLY	1
25	166745	CHAIN TIGHTENER	1	54	095026	EYE BOLT 3/8 X 4	1
26	166752	DRIVE SHAFT SPACER	4	55	166330	FRONT CLUTCH DOG	1
27	166761	APRON DRIVE SHAFT SPROCKET ...	4	56	166077	BUSHING 3" OD X 2-3/4" ID x 1/2"	1
28	180-13128	3/8 X 1-3/8 SQUARE KEY	4	57	166065	SNAP RING	1
29	166874	POLY GEAR BOX WASHER	1	58	166907	CLUTCH SPROCKET WASHER	1
30	166163	3/8 X 2-3/8 KEY	1	59	166366	CLUTCH PIN	1
31	166194	APRON DRIVE CHAIN 56 PITCH #80 ..	1	60	166112	LYNCH PIN	1

* Not Shown

1660 - CROSS APRON AND DRIVE

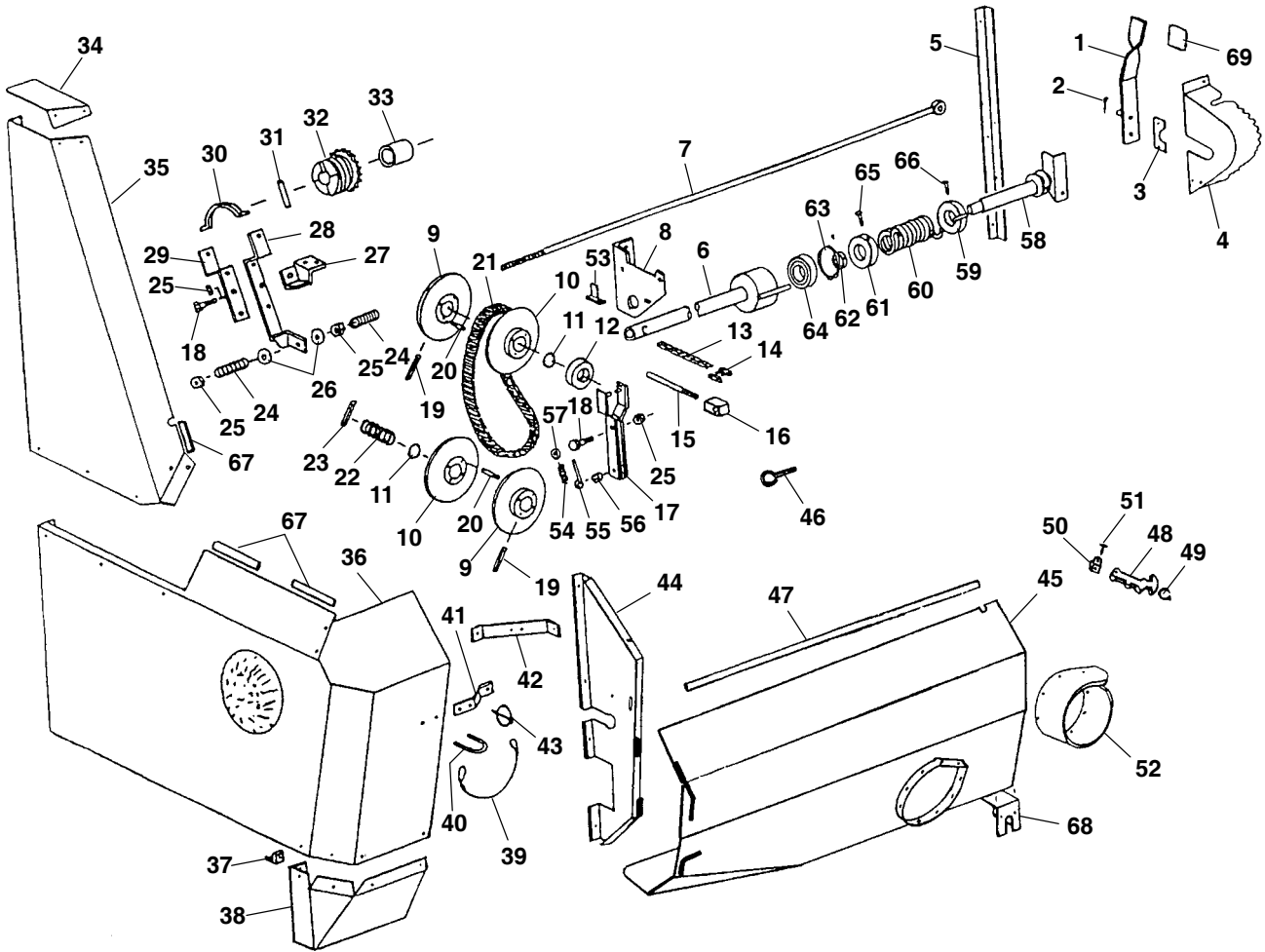


1660 - CROSS APRON AND DRIVE

Ref. No.	Part No.	Description	Qty. Req.	Ref. No.	Part No.	Description	Qty. Req.
1	166816	CROSS APRON PAN EXTENSION	1	21	D9130	TIGHTENER SPROCKET 17T	1
2	166916	SPACER	2	22	166889	SPROCKET 24T	1
3	166818	PAN EXTENSION CARRIER	2	23	066172	EYE BOLT 5/16 X 3	1
4	166819	RETURN PAN EXTENSION	1	24	166891	SPRING	1
5	520084	1" BEARING COLLAR	5	25	166827	TIGHTENER BRACKET	1
6	166080	BEARING FLANGE	6	26	166770	SHEAR HUB	1
7	520063	BEARING	4	27	166876	SPROCKET	1
8	166820	CROSS APRON IDLER SHAFT	1	28	166537	BUSHING/BRONZE 2 X 1-3/4 X 1/4	1
9	166821	TIGHTENER BRACKET	2	29	166094	IDLER SPROCKET 20T	1
10	166097	8 TOOTH SPROCKET	4	30	166197	BEARING	1
11	650513	1/4 X 1 WOODRUFF KEY	5	31	166828	CROSS APRON SHAFT GUARD	1
12	166822	TIGHTENER BOLT	2	32	166108	SNAP RING	1
13	166823	TIGHTENER PANEL REAR	1	33	166769	SHAFT	1
14	166824	TIGHTENER PANEL FRONT	1	34	166829	CROSS CONVEYOR	1
15	166825	PTO HOLDER RUBBER TAB	1	35	166176	550 OFFSET LINK	2
16	166748	PTO HOLDER	1	36	166177	550 SLAT W/ATTACHMENT LINKS	15
17	166855	BEARING FLANGE	2	37	081311	PLAIN CONNECTOR	2
18	H728A	SPACER	1	38	166164	SNAP RING	1
19	166667	CROSS CONVEYOR HOLD-DOWN	2	39	650028	CS 5/16 X 1 GR2	1
20	166195	FRONT DRIVE CHAIN #50 X 193 LNKS	1				
*	500060	#50 OFFSET LINK	1				
*	500057	PLAIN COUPLER	1				

* Not Shown

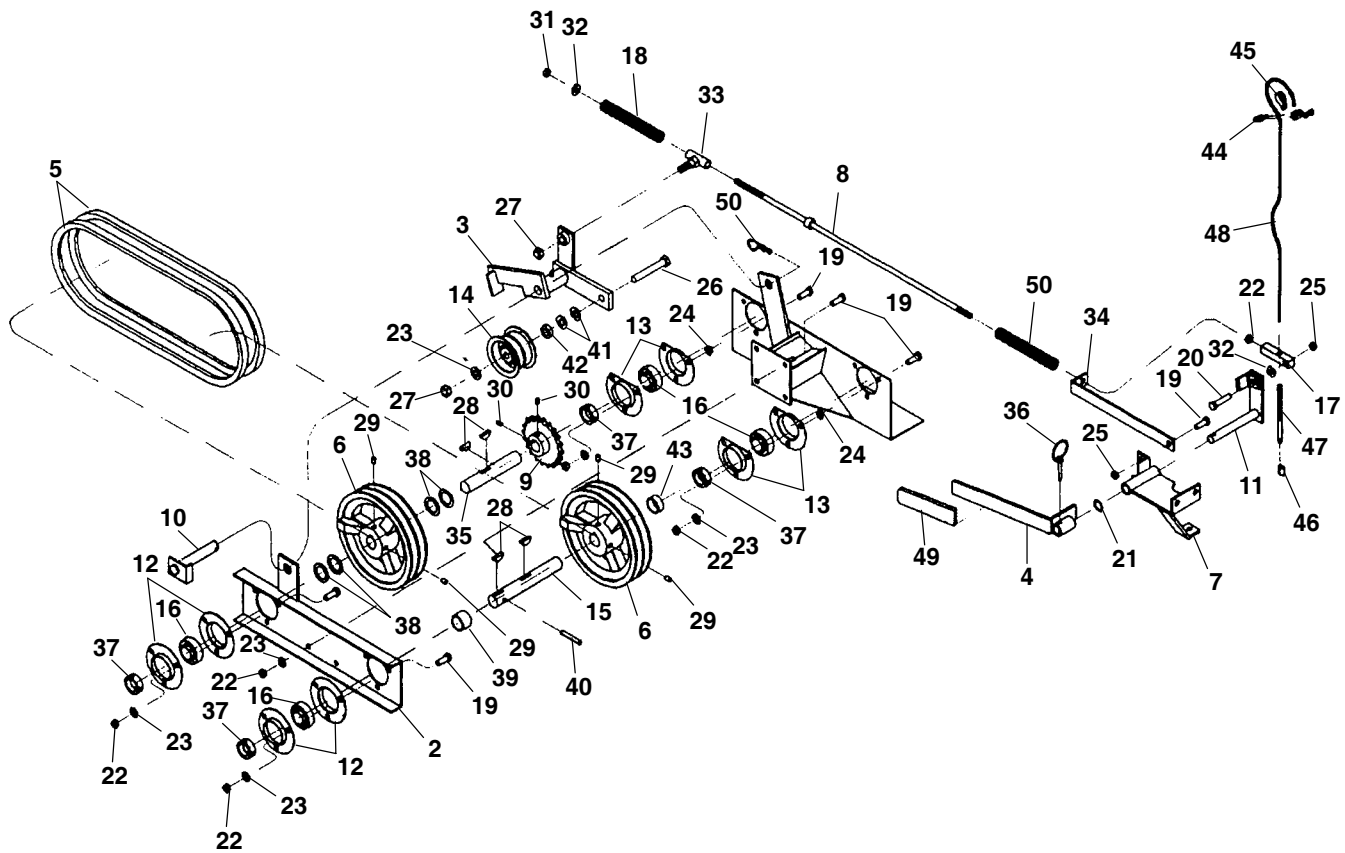
1660 - SHIELDS, BEATER CLUTCH BELT DRIVE



1660 - SHIELDS, BEATER CLUTCH BELT DRIVE

Ref. No.	Part No.	Description	Qty. Req.	Ref. No.	Part No.	Description	Qty. Req.
1	166756	SHIFTER HANDLE	1	36	166601	MAIN SIDE SHIELD	1
2	651571	CP EPSC 5/32X2	1	37	166220	SHIELD ANGLE	1
3	166831	SHIFTING PIPE BRACKET	1	38	166602	SIDE SHIELD BOTTOM	1
4	166753	SPEED SELECTOR PANEL	1	39	166603	CLIP PIN CABLE	1
5	166757	FRONT CENTER ANGLE	1	40	166086	U-BOLT	1
6	166758	SHIFTING PIPE (APRON)	1	41	166604	SHIELD LATCH BRACKET	1
7	166759	SHIFTING ROD (BEATER)	1	42	166670	SHIELD BRACE	1
8	166832	SHIFTING BRACKET	1	43	166226	CLIP PIN	1
9	166833	STATIONARY SHEAVE	2	44	166730	FRONT UPRIGHT SHIELD	1
10	166707	SLIDING SHEAVE	2	45	166731	FRONT SHIELD	1
11	166890	O-RING 1.50 OD X 1.25 ID	2	46	095026	EYE BOLT 3/8 X 4	1
12	166867	THRUST BEARING	1	47	166751	38 PLASTIC EDGING	1
13	166170	#40 CHAIN 7 PITCHES	1	48	166846	FRONT SHIELD LATCH (RUBBER)	1
14	500037	PLAIN COUPLER	1	49	166847	LATCH CATCH BRACKET	1
15	166587	LINKAGE ROD	1	50	166848	LATCH MOUNTING BRACKET	1
16	166588	ADJUSTMENT BLOCK	1	51	166849	PIN	1
17	166589	VARIABLE SPEED SHIFTER	1	52	166606	PTO RUBBER SHIELD	1
18	650495	CS 1/2X1-1/4	2	53	166665	SPRING SHIFT BRACKET	1
19	124330	SPIRAL PIN	2	54	166666	SHIFTING SPRING	1
20	166708	SHEAVE-PIN	8	55	166664	SHIFTING SPRING ROD	1
21	166147	VARIABLE SPEED BELT	1	56	166910	SPACER 3/8 X 5/19 LG	1
22	166868	SPRING	1	57	650863	FW 1/4	1
23	078262	SPRING PIN	1	58	166704	SHIFTER PIPE HANDLE END	1
24	166869	SPRING	1	59	166705	SPRING PIN COLLAR	1
25	071706	LN 1/2	4	60	166872	SPRING	1
26	166701	BEATER CLUTCH WASHER	2	61	166706	SPRING COLLAR	1
27	166592	BEATER CLUTCH BRACKET	1	62	520084	1" BEARING COLLAR	1
28	166593	BEATER CLUTCH LONG ARM	1	63	166108	SNAP RING	1
29	166594	BEATER CLUTCH SHORT ARM	1	64	166197	BEARING	1
30	166165	CLUTCH YOKE W/ZERK	1	65	650062	CS 3/8X1-1/4	1
31	166595	BEATER CLUTCH PIN	1	66	650490	CS 3/8X1	1
32	166596	BEATER CLUTCH SPROCKET	1	67	166728	SHIELD EDGING	1
33	166597	BEATER CLUTCH BUSHING	1	68	166741	SHIELD	1
34	166598	BEATER SHIELD TOP	1	69	166775	HANDLE GRIP	1
35	166599	BEATER SIDE SHIELD	1				

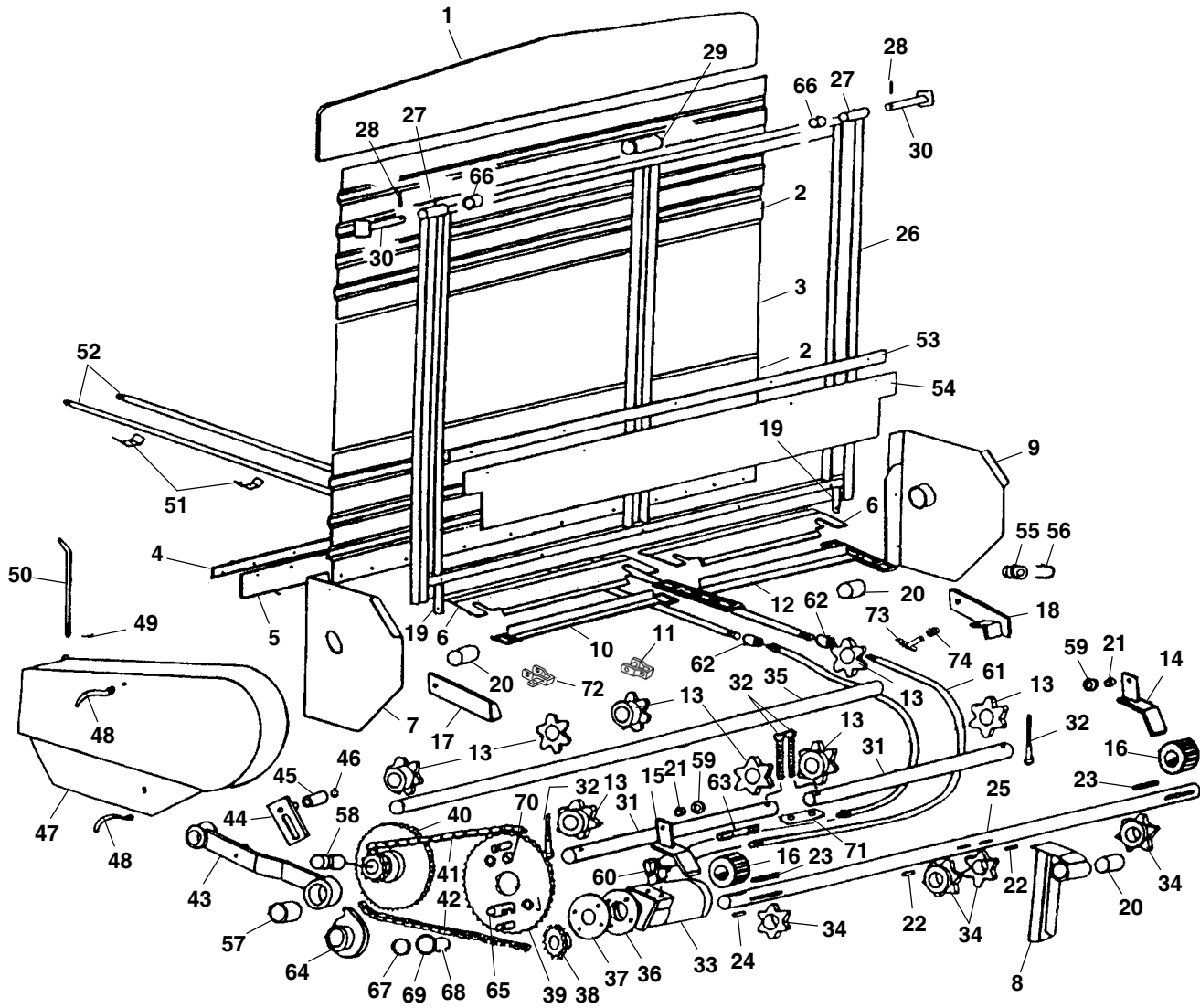
1660 - CROSS CONVEYOR CLUTCH - BELT DRIVE



1660 - CROSS CONVEYOR CLUTCH - BELT DRIVE

Ref. No.	Part No.	Description	Qty. Req.	Ref. No.	Part No.	Description	Qty. Req.
2	166732	FRONT CLUTCH PLATE	1	27	071706	LN 1/2	2
3	166737	IDLER STOP ASSEMBLY	1	28	650513	1/4 X 1 WOODRUFF KEY	4
4	166733	HANDLE LEVER	1	29	650213	SHSS 3/8X3/8	4
5	166153	V-BELT	2	30	650204	SHSS 5/16X3/8	2
6	166875	PULLEY	2	31	067847	HLN 3/8	1
7	166735	HANDLE MOUNT	1	32	654006	FW 3/8	2
8	166738	SHIFTING ROD	1	33	166739	SLIDE	1
9	166060	SPROCKET 50B20	1	34	166743	SPRING BRACKET	1
10	166736	TIGHTENER PIVOT SHAFT	1	35	166744	SHAFT	1
11	166734	HANDLE LEVER	1	36	166226	CLIP PIN	1
12	166080	BEARING FLANGE	4	37	520084	1" BEARING COLLAR	4
13	166855	BEARING FLANGE SHEARED	4	38	166912	SPACER 1-1/2 OD X 1-1/32 ID X 074 ..	AR
14	166107	IDLER PULLEY	1	39	166915	SPACER	1
15	166746	SHAFT	1	40	124331	SPIRAL PIN	1
16	520063	BEARING	4	41	651148	FW 1/2	2
17	166742	SHIFTER ROD END	1	42	166845	SPACER 9/16	1
18	166070	SPRING 3/4	1	43	360-17392	SPACER	1
19	650490	CS 3/8X1	17	44	166898	CABLE CLAMP	1
20	650579	CS 3/8X1-3/4	1	45	166223	THIMBLE	1
21	651156	LW INT 5/8	1	46	166224	CABLE COMPRESSION SLEEVE	1
22	653010	HN 3/8	17	47	166754	CABLE END STIFFENER	1
23	654026	LW 3/8	16	48	166750	EMERGENCY STOP CABLE	1
24	653038	HJN 3/8	6	49	166755	HANDLE LEVER GRIP	1
25	094762	LN T 3/8	2	50	166155	SPRING	1
26	650594	CS 1/2 X 3-1/4	1				

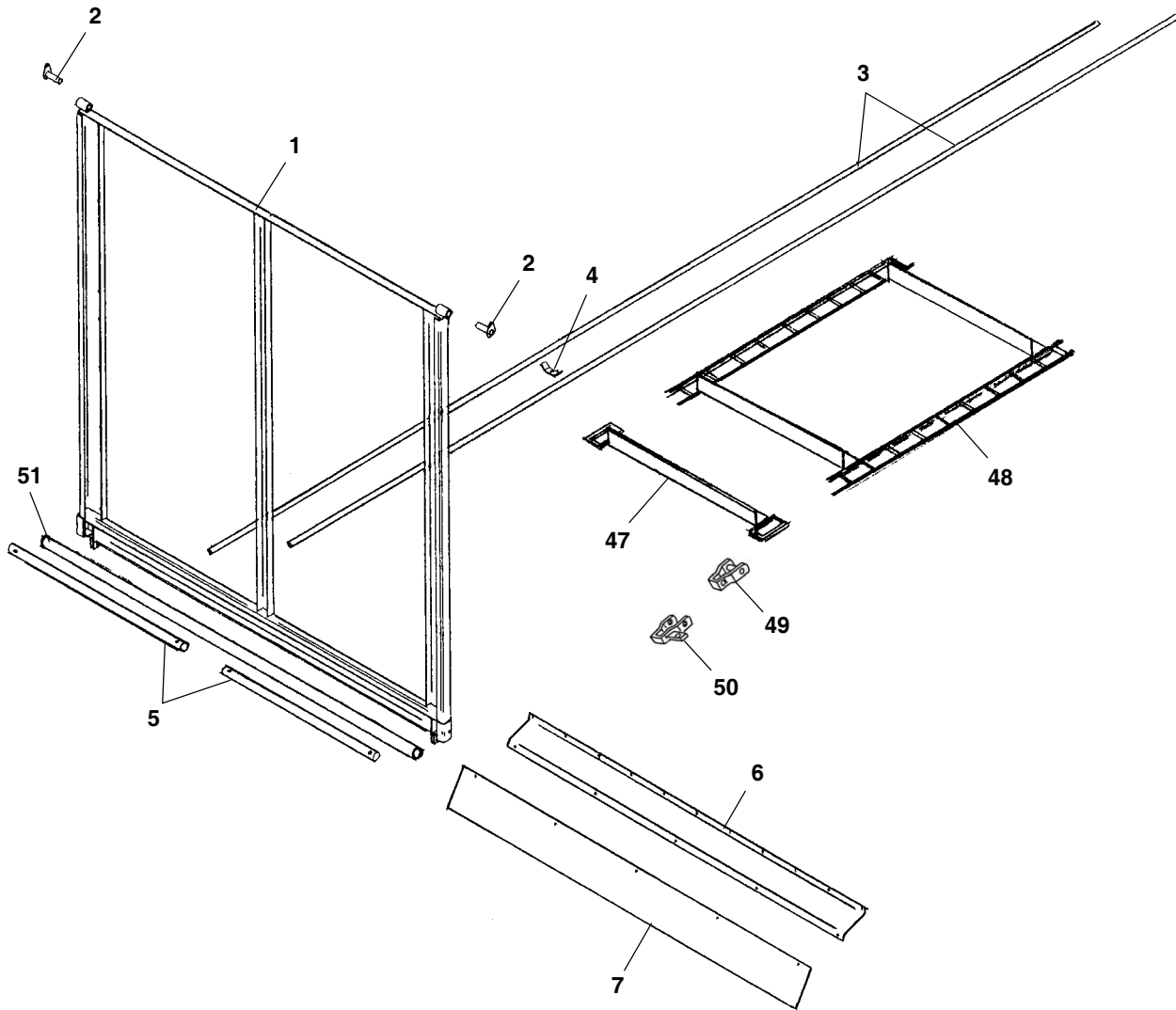
1660 - REAR UNLOAD ASSEMBLY



1660 - REAR UNLOAD ASSEMBLY

Ref. No.	Part No.	Description	Qty. Req.	Ref. No.	Part No.	Description	Qty. Req.
1	166388	BACK DOOR TOP PANEL	1	37	166400	HYDRAULIC MOTOR MOUNT	1
2	166372	BACK DOOR TOP STEEL	1	38	166082	13T SPROCKET	1
3	166373	BACK DOOR CENTER (FLAT) STEEL	2	39	166105	SPROCKET	1
4	166703	STRAP	1	40	166120	84 TOOTH SPROCKET (50A84)	1
5	166376	RUBBER SEAL	1	41	082023	ROLLER CHAIN #80 X 73 LINKS	1
6	166390	DRIVE SHAFT PANEL	2	42	074879	ROLLER CHAIN #50 X 90 LINKS	1
7	166392	LH DRIVE SHAFT MOUNT	1	43	166332	DRIVE SHAFT BRACE	1
8	166340	CENTER BEARING MOUNT	1	44	166200	CHAIN TIGHTENER BRACKET	1
9	166394	RH DRIVE SHAFT MOUNT	1	45	166203	ROLLER CHAIN TIGHTENER	1
10	166189	667H PINTLE W/ATT. LINKS	1	46	166059	RING/SNAP	1
11	152391	667H PINTLE CONNECTOR LINKS	4	47	166339	COVER	1
12	166182	667H PINTLE APRON 18'	2	48	166650	HANDLE NUTS	2
		(202 TOTAL LINKS PER STRAND, 21 CROSS SLATS PER APRON)		49	651160	CP EPSC 5/32X1-1/2	1
	166180	667H PINTLE APRON 20'	2	50	166320	HINGE PIN	1
		(222 TOTAL LINKS PER STRAND, 23 CROSS SLATS PER APRON)		51	166073	HOSE HOLDER	4
				52	166360	HYDRAULIC PIPE 18'	2
13	166885	REAR IDLER SPROCKET	8		166322	HYDRAULIC PIPE 20'	2
14	166377	LATCH BRACKET-R.H.	1	53	166323	POLY SHIELD STRAP	1
15	166378	LATCH BRACKET-L.H.	1	54	166324	POLY SHIELD 12 X 88-1/4	1
16	166116	LATCH SPROCKET	2	55	166086	U-BOLT	1
17	166395	REAR DOOR LOCK LATCH LH	1	56	166225	CABLE GUIDE	1
18	166396	REAR DOOR LOCK LATCH RH	1	57	166076	BRONZE BUSHING	1
19	166379	LATCH PLATE	2	58	166099	BUSHING 1-1/2 OD X 1-1/4 ID	2
20	166201	DRIVE SHAFT BUSHING	3	59	166217	LATCH WASHER	2
21	166380	LATCH PIVOT	2	60	058654	1/2 STREET ELBOW	2
22	056230	KEY 3/8 SQUARE X 2 LONG	2	61	166109	1/2 HOSE X 60	2
23	166100	KEY 3/8 SQ. X 4-3/8	2	62	660027	1/2 PIPE COUPLER	2
24	166111	KEY 3/8 X 2-1/4 ROUND ENDS	1	63	067457	1/2 CHECK VALVE	1
25	166367	REAR DRIVE SHAFT (STRESSPROOF)	1	64	166331	REAR CLUTCH DOG	1
26	166389	BACK DOOR FRAME WORK	1	65	166366	CLUTCH PIN	1
27	166381	HINGE PIPE	2	66	166336	COLLAR	1
28	116353	SPIRAL PIN	2	67	166077	BUSHING 3 OD X 2-3/4 ID X 2	1
29	166382	GUARD	1	68	166065	SNAP RING	1
30	166335	HINGE PIN	2	69	166097	WASHER/CLUTCH SPROCKET	1
31	166397	TIGHTENER SHAFT	2	70	166112	LYNCH PIN	1
32	166084	CS 1/2X9-1/2	4	71	166368	LOCK TAB	1
33	049073a	HYDRAULIC MOTOR	1	72	152710	667H PINTLE ATT.LINK RH OR LH	AR
34	166068	DRIVE SHAFT SPROCKETS	1	73	166950	SPRING	1
35	166398	IDLER SHAFT (INSIDE)	1	74	166949	LATCH PIN	1
36	166399	HYDRAULIC MOTOR MOUNT SPACER	1	a) See page 20 for individual components.			

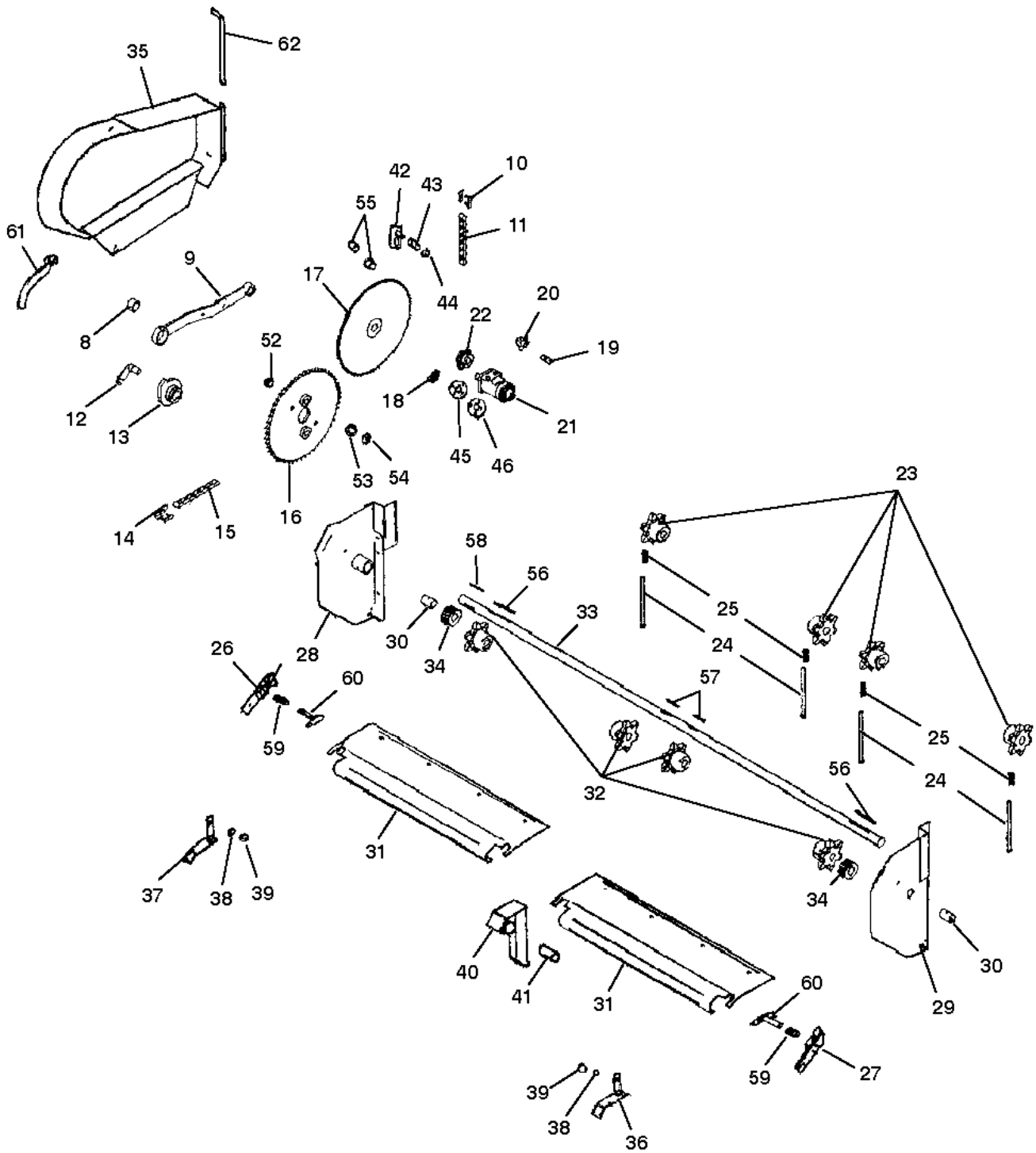
1660HD - REAR UNLOAD ASSEMBLY



1660HD - REAR UNLOAD ASSEMBLY

Ref. No.	Part No.	Description	Qty. Req.	Ref. No.	Part No.	Description	Qty. Req.
1	166941	REAR DOOR FRAMEWORK	1	48	166182	667H PINTLE APRON (18')	2
2	166265	DOOR HINGE PIN	2			(202 TOTAL LINKS PER STRAND, 21 CROSS SLAT PER APRON)	
3	166360	HYDRAULIC PIPE (18')	2				
	166322	HYDRAULIC PIPE (20')	2		166180	667H PINTLE APRON 20'	2
4	166073	HOSE HOLDER	4			(222 TOTAL LINKS PER STRAND, 23 CROSS SLAT PER APRON)	
5	166397	TIGHTENER SHAFT	2				
6	166948	DRIVE SHAFT SHIELD	1				
7	166943	POLY SEAL	1	49	152391	667H PINTLE CONNECTOR LINK	1
47	166189	667H PINTLE W/ATTACHMENT LINKS		50	152710	667H PINTLE ATT.LINK RH OR LH	1
		18' BOX	21	51	166398	IDLER SHAFT (INSIDE)	1
		20' BOX	23				

1660HD - REAR UNLOAD ASSEMBLY

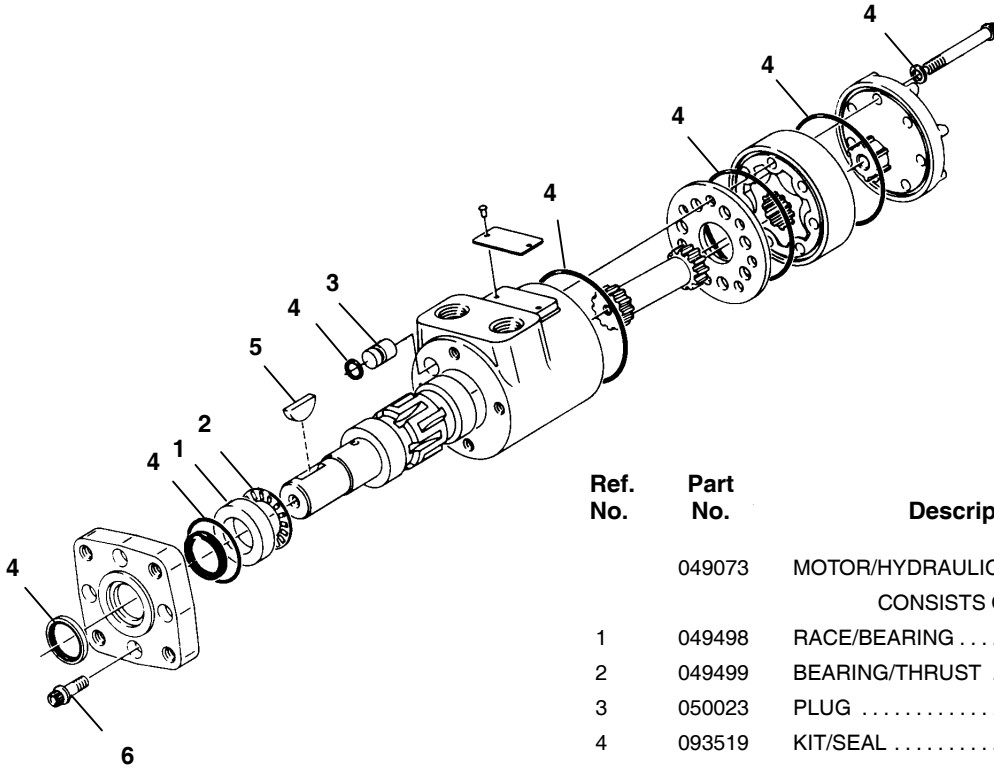


1660HD - REAR UNLOAD ASSEMBLY

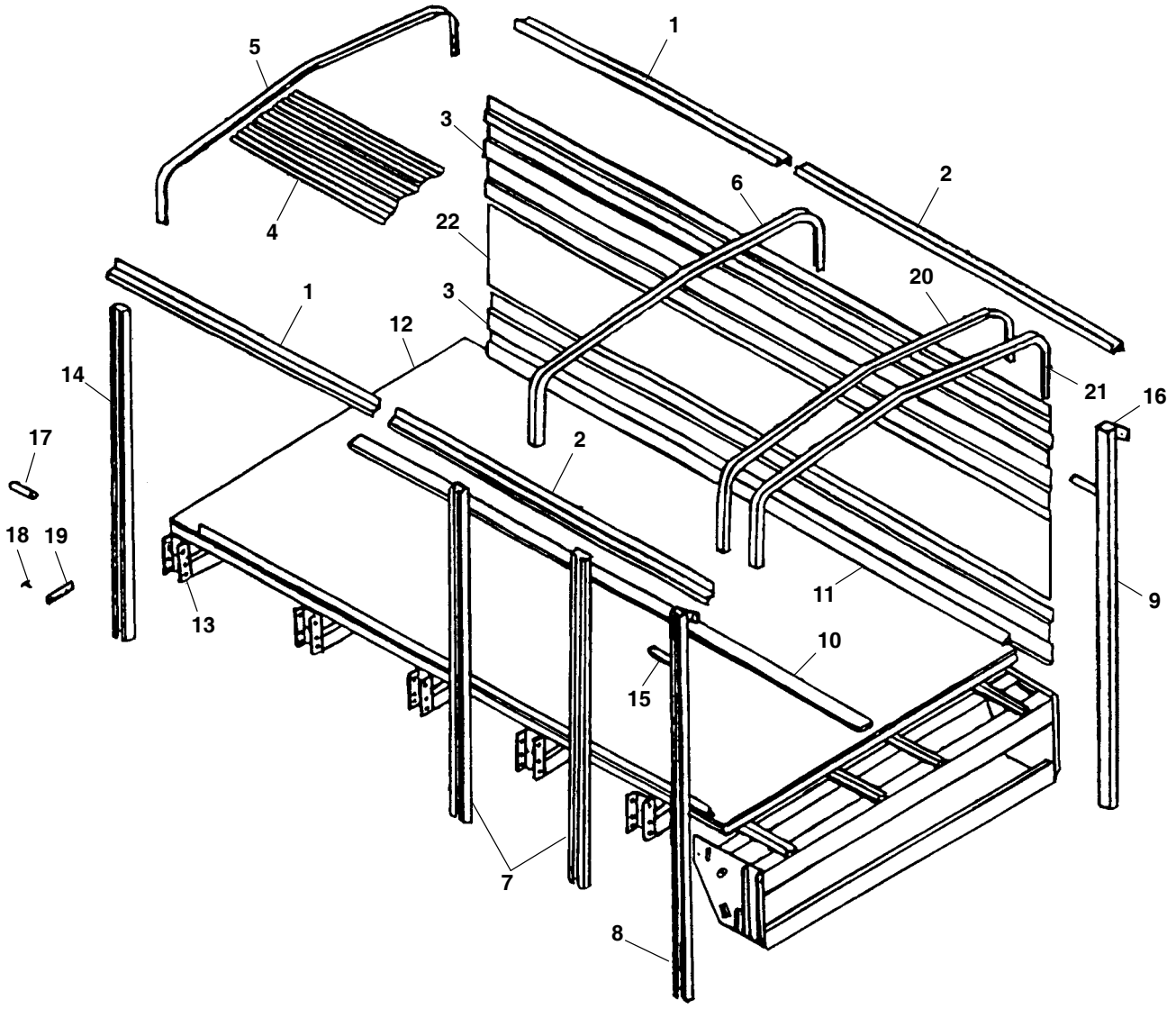
Ref. No.	Part No.	Description	Qty. Req.	Ref. No.	Part No.	Description	Qty. Req.
8	166076	BRONZE BUSHING	1	34	166116	LATCH SPROCKET	2
9	166332	DRIVE SHAFT BRACE	1	35	166339	COVER	1
10	500057	#50 CONNECTOR LINK	1	36	166377	LATCH BRACKET-R.H.	1
11	074879	ROLLER CHAIN #50 X 90 LINKS	1	37	166378	LATCH BRACKET-L.H.	1
12	166366	CLUTCH PIN	1	38	166380	LATCH PIVOT	2
13	166331	REAR CLUTCH DOG	1	39	166217	LATCH WASHER	2
14	500195	#80 CONNECTOR LINK	1	40	166340	CENTER BEARING MOUNT	1
15	082083	#80 CHAIN 73 PITCH	1	41	166201	DRIVE SHAFT BUSHING	1
16	166105a	SPROCKET	1	42	166200	CHAIN TIGHTENER BRACKET	1
17	166120	84 TOOTH SPROCKET (50A84)	1	43	166203	ROLLER CHAIN TIGHTENER	1
18	650210	3/8-16 X 3/8 SSS CUP PT PLN	1	44	166059	SNAP RING	1
19	067457	1/2 CHECK VALVE	1	45	166400	HYDRAULIC MOTOR MOUNT	1
20	058654	1/2 STREET ELBOW	1	46	166399	HYDRAULIC MOTOR MOUNT SPACER	1
21	049073b	HYDRAULIC MOTOR	1	52	166077	BUSHING 3 OD X 2-3/4 ID X 1/2	1
22	166082	13T SPROCKET	1	53	166907	CLUTCH SPROCKET WASHER	1
23	166885	REAR IDLER SPROCKET	8	54	166065	SNAP RING	1
24	166888	IDLER BOLT 1/2 X 9-1/2	4	55	166099	BUSHING 1-1/2 OD X 1-1/4 ID	2
25	166844	SPRING - RED	4	56	166100	KEY 3/8 SQ. X 4-3/8	2
26	166395	LH DOOR SAFETY LATCH	1	57	056230	KEY 3/8 SQUARE X 2 LONG	2
27	166396	RH DOOR SAFETY LATCH	1	58	166111	KEY 3/8 X 2-1/4 ROUND ENDS	1
28	166946	LH DRIVE SHAFT MOUNT	1	59	166950	SPRING	2
29	166947	RH DRIVE SHAFT MOUNT	1	60	166949	LATCH PIN	2
30	166201	DRIVE SHAFT BUSHING	1	61	166650	HANDLE NUT	2
31	166948	DRIVE SHAFT SHIELD	2	62	166320	SHIELD HINGE PIN	1
32	166068	DRIVE SHAFT SPROCKETS	4	a) Includes Part No. 166077.			
33	166367	REAR DRIVE SHAFT (STRESSPROOF)	1	b) See page 20 for individual components.			

1660HD - HYDRAULIC COMPONENTS

Charlynn Motor



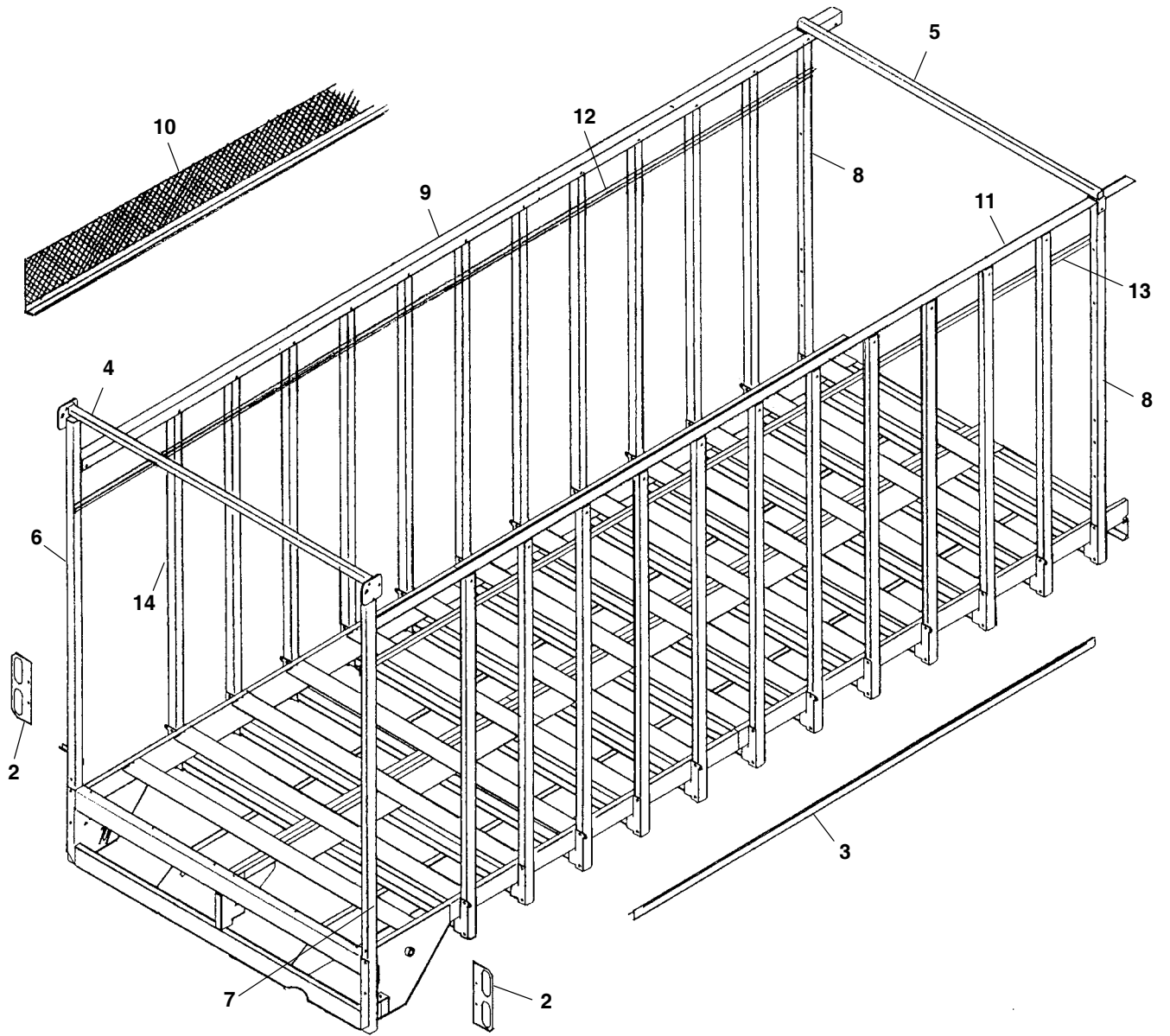
Ref. No.	Part No.	Description	Qty. Req.
	049073	MOTOR/HYDRAULIC	1
		CONSISTS OF:	
1	049498	RACE/BEARING	1
2	049499	BEARING/THRUST	1
3	050023	PLUG	1
4	093519	KIT/SEAL	1
5	650513	KEY/WOODRUFF 1/4X1	1
6	650927	SCREW/TPFH 5/16-24NFX7/8	4



1660 - BOX COMPONENTS

Ref. No.	Part No.	Description	Qty. Req.	Ref. No.	Part No.	Description	Qty. Req.
1	166618	18' ROOF SILL BACK SECTION	2	11	166634	18' APRON CHAIN SIDE SPACER	2
	166709	20' ROOF SILL BACK SECTION	2		166716	20' APRON CHAIN SIDE SPACER	2
2	166615	18' ROOF SILL FRONT SECTION	2	12	166637	18' FLOOR ASSEMBLY	1
	166710	20' ROOF SILL FRONT SECTION	2		166717	20' FLOOR ASSEMBLY	1
3	166621	18' SIDE STEEL	4	13	166694	STAKE POCKET	
	166711	20' SIDE STEEL	4			18' BOX	12
4	166625	18' ROOF STEEL	6			20' BOX	14
	166714	20' ROOF STEEL	6	14	166835	FRONT STAKE	2
5	166842	BRANCH GUARD	1	15	166325	BRACE	2
6	166841	ROOF SUPPORT		16	166333	DOOR HINGE	2
		18' BOX	6	17	166839	STAKE SPACER	4
		20' BOX	7	18	166892	PLASTIC GROMMET FOR CABLE	
7	166836	SIDE STAKE				18' BOX	23
		18' BOX	10			20' BOX	27
		20' BOX	12	19	166840	CABLE BRACKET	1
8	166341	LH REAR STAKE	1	20	166672	REAR ROOF SUPPRT (HIGH SIDED) ..	1
9	166384	RH REAR STAKE	1	21	166772	REAR BRANCH GUARD	1
10	166631	18' APRON CHAIN CENTER SPACER .	1	22	166938	18' CENTER STEEL PANEL	2
	166715	20' APRON CHAIN CENTER SPACER .	1		166939	20' CENTER STEEL PANEL	2

1660HD - BOX COMPONENTS

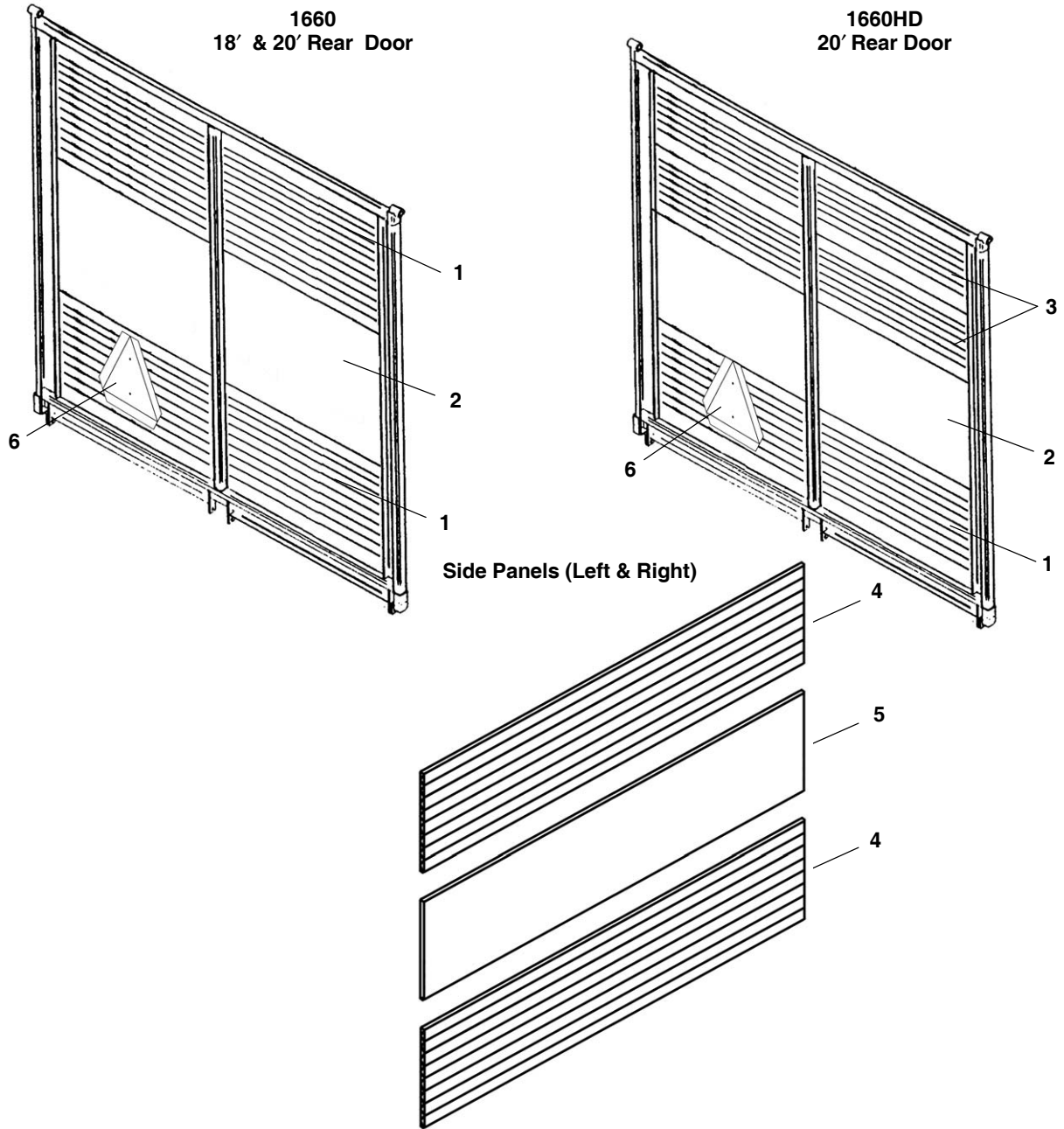


1660HD - BOX COMPONENTS

Ref. No.	Part No.	Description	18' Qty. Req.	20' Qty Req.
2	166329	LIGHT BRACKET	2	2
3	166262	FILLER CORNER	2	2
4	166952	TOP REAR BRACE	4	4
5	166953	CROSS FRONT BRACE	1	1
6	166954	LH REAR STAKE	1	1
7	166955	RH REAR STAKE	1	1
8	166956	FRONT STAKE	2	2
9	166289	LH TOP RAIL (20')	-	1
	171745	RAIL/TOP LEFT (18')	1	-
10	166957	LH EXPANDED METAL SCREEN (20')	-	1
	171749	SCREEN/LEFT (18')	1	-
*	166958	RH EXPANDED METAL SCREEN (20')	-	1
*	171750	SCREEN/RIGHT (18')	1	-
11	166290	RH TOP RAIL (20')	-	1
	171746	RAIL/TOP RIGHT (18')	1	-
12	166959	LH TOP ANGLE (20')	-	1
	171747	ANGLE/TOP LEFT (18')	1	-
13	166960	RH TOP ANGLE (20')	-	1
	171748	ANGLE/TOP RIGHT (18')	1	-
14	166961	SIDE STAKE	22	22

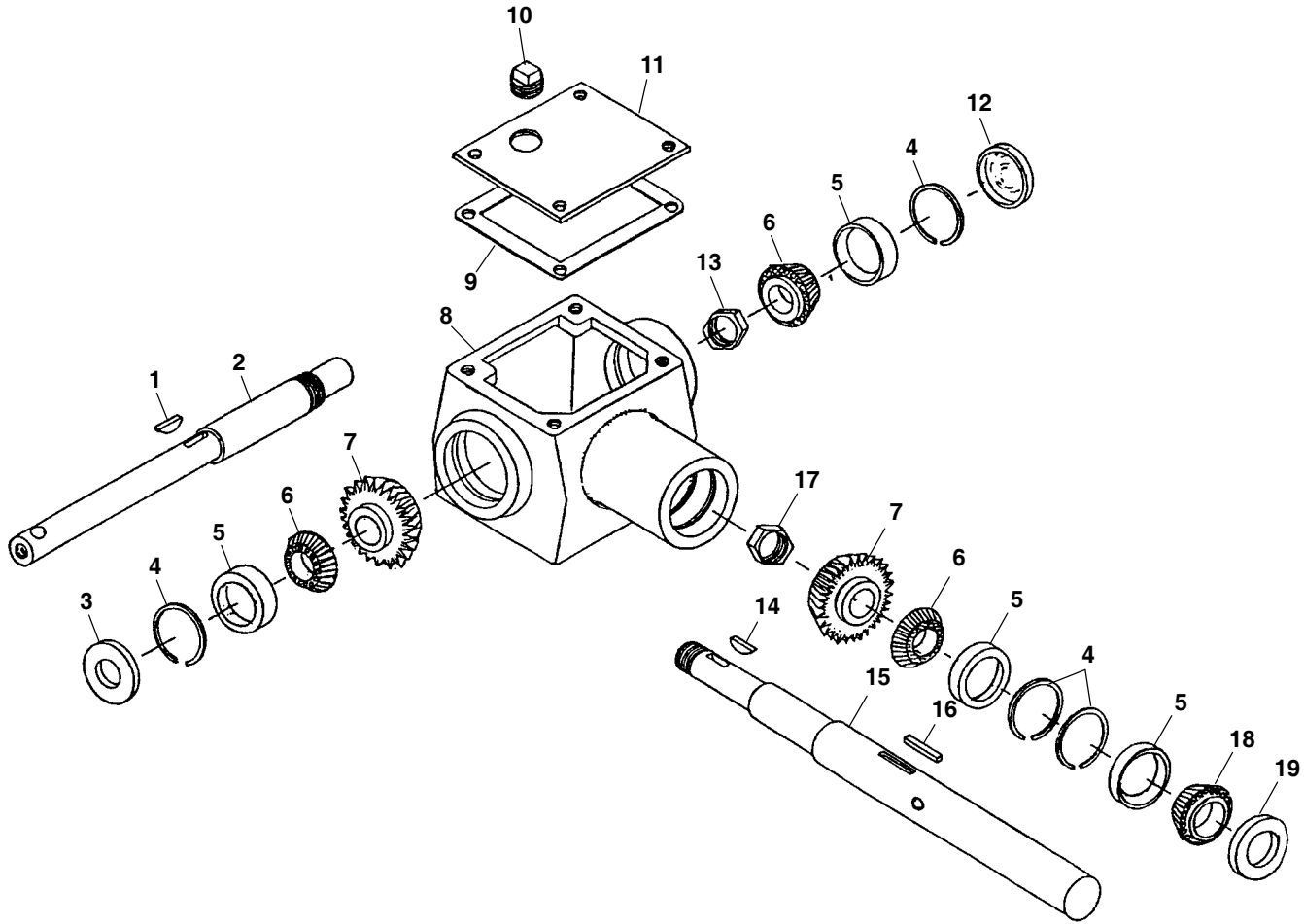
* Not Shown

1660 & 1660HD - BOX COMPONENTS



Ref. No.	Part No.	Description	18' Qty. Req.	20' Qty. Req.	18' HD Qty. Req.	20' HD Qty. Req.
1	166372	REAR DOOR PANEL	2	2	1	1
2	166373	REAR PANEL CENTER	1	1	1	1
3	166673	REAR PANEL	-	-	2	2
4	166621	SIDE PANEL	4	-	-	-
	166711	SIDE PANEL	-	4	-	-
	166672	SIDE PANEL 26 X 232	-	-	-	4
	171545	SIDE PANEL 26 X 208	-	-	4	-
5	166938	SIDE CENTER PANEL	2	-	-	-
	166939	SIDE CENTER PANEL	-	2	2	2
6	145235	SMV MARKER/MOUNTED	1	1	1	1

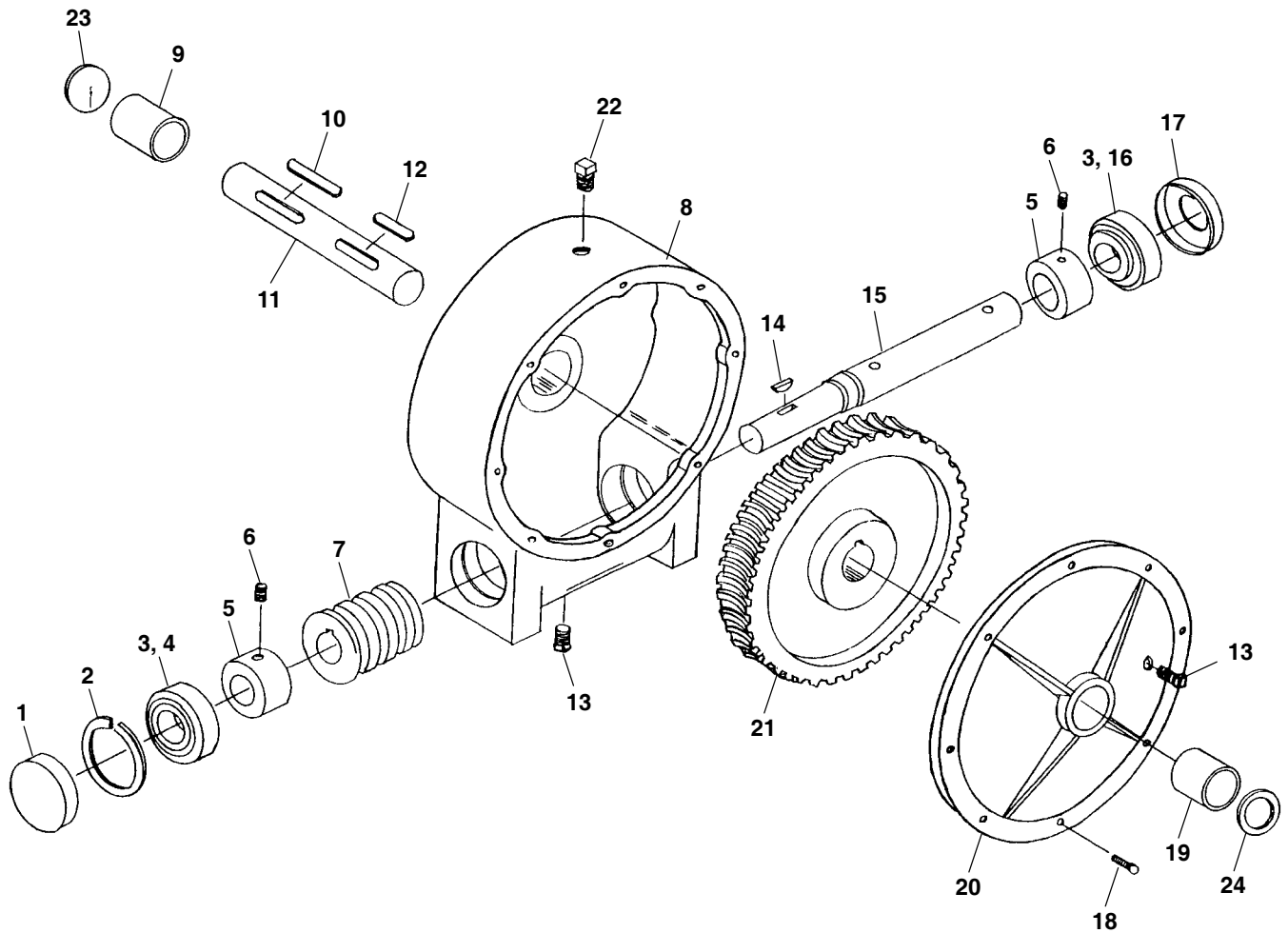
1660 - BEVEL GEARBOX



Ref. No.	Part No.	Description	Qty. Req.	Ref. No.	Part No.	Description	Qty. Req.
1	650513	1/4 X 1 WOODRUFF KEY	2	11	166211	COVER	1
2	166607	GEAR BOX SIDE SHAFT	1	12	166897	DUST CAP	1
3	166078	SEAL TCM10243	1	13	166542	NUT/STAKE 1-1/8	1
4	166074	SNAP RING	4	14	650513	1/4 X 1 WOODRUFF KEY	2
5	520033	BEARING CUP	4	15	166608	GEAR BOX FRONT SHAFT	1
6	520032	BEARING CONE	3	16	180-10773	1/4 X 1-1/4 KEY	1
7	166546	GEAR/BEVEL 14T	2	17	166545	NUT/STAKE 1 F	1
8	166208	GEARBOX HOUSING	1	18	053827	BEARING CONE	1
9	166209	GEARBOX GASKET	1	19	166150	SEAL	1
10	166075	FILL PLUG	1	*	166609	BEVEL GEAR BOX COMPLETE	1

* Not Shown

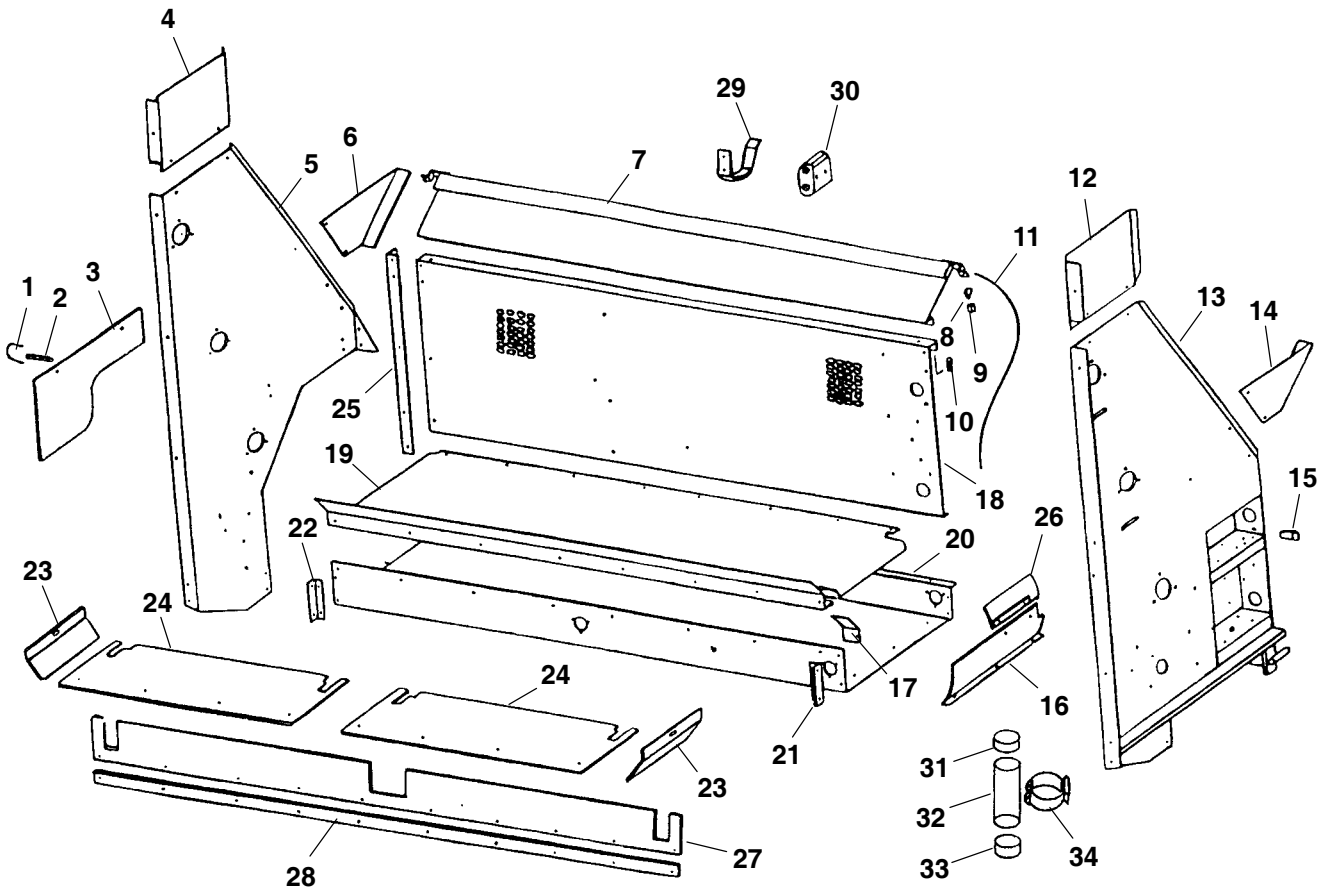
1660 - WORM GEARBOX



Ref. No.	Part No.	Description	Qty. Req.	Ref. No.	Part No.	Description	Qty. Req.
1	166897	DUST CAP	1	14	650513	1/4 X 1 WOODRUFF KEY	1
2	166074	SNAP RING	1	15	166612	WORM GEAR FRONT SHAFT	1
3	520033	BEARING CUP	2	16	053827	BEARING CONE	1
4	520032	BEARING CONE	1	17	166101	SEAL TCM 12203TC	1
5	166904	SPACER	2	18	650490	CS 3/8 X 1	8
6	650215	SHSS CP 3/8X1/2	2	19	166853	COVER BUSHING	1
7	166087	WORM	1	20	166229	WORM GEARBOX COVER	1
8	166228	GEARBOX HOUSING	1	21	166089	WORM GEAR	1
9	166854	GEARBOX BUSHING	1	22	166075	PLUG/FILL	1
10	166151	3/8 X 2-3/8 KEY ROUND ENDS	1	23	166230	CAP	1
11	166610	WORM GEAR SIDE SHAFT	1	24	170-10463	OIL SEAL	1
12	180-13128	3/8 X 1-3/8 SQUARE KEY	1	*	166231	WORM GEARBOX COMPLETE	1
13	138245	PLUG 3/8	1				

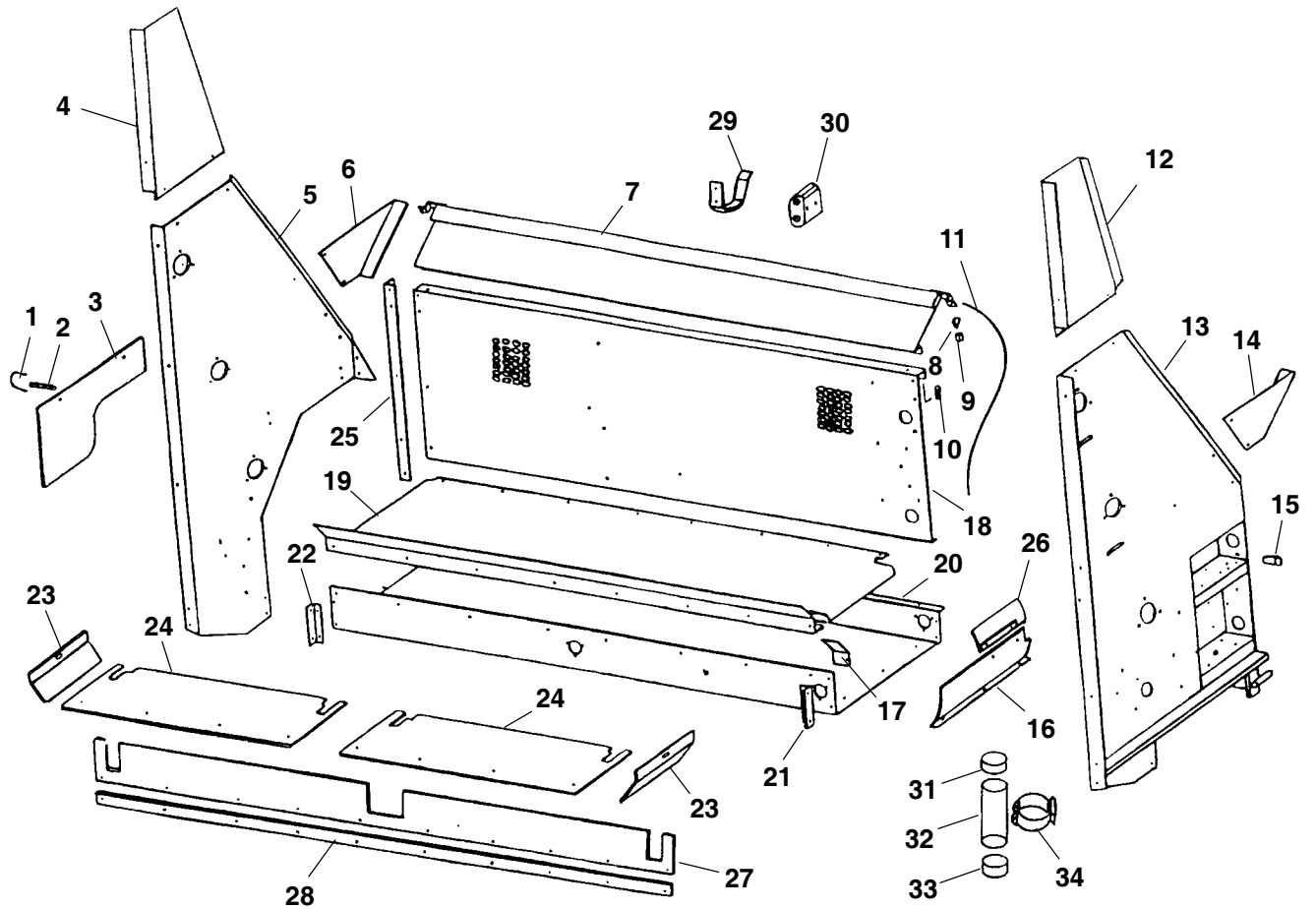
* Not Shown

1660 - HOUSING COMPONENTS



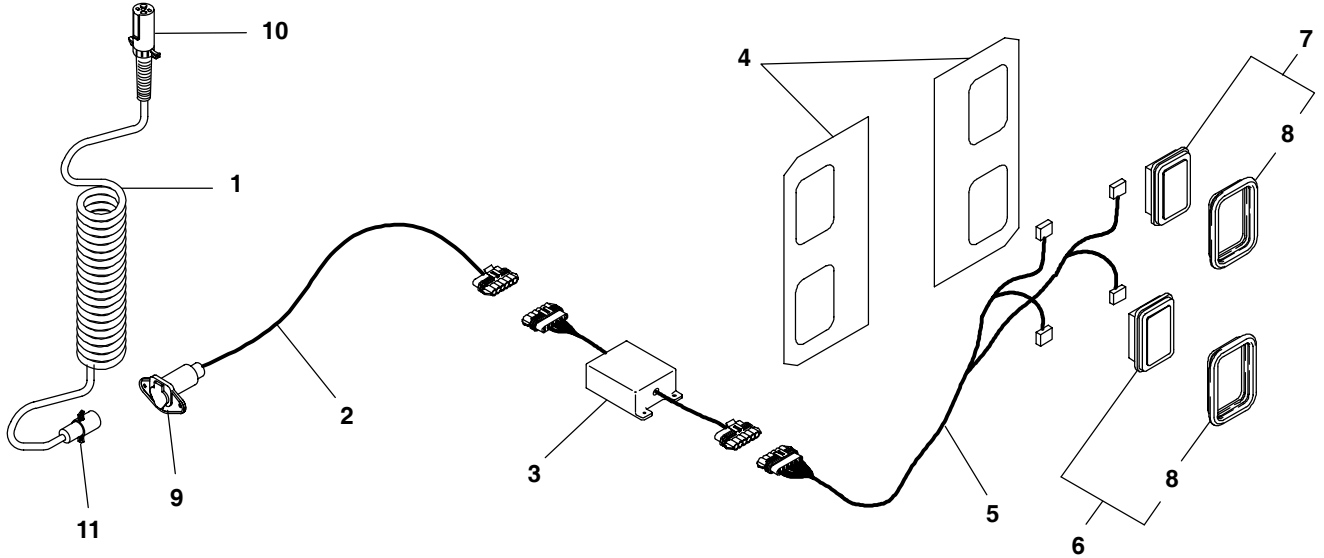
Ref. No.	Part No.	Description	Qty. Req.	Ref. No.	Part No.	Description	Qty. Req.
1	166086	U-BOLT	1	18	166747	FRONT MAIN PANEL	1
2	166866	SPRING FOR SHIELD	1	19	166628	CROSS APRON PAN	1
3	166658	PLASTIC BEATER GUARD	1	20	166749	RETURN PAN	1
4	166713	LH SIDE PANEL TOP	1	21	166641	RH RETURN PAN ANGLE	1
5	166773	LH SIDE PANEL	1	22	166647	LH RETURN PAN ANGLE	1
6	166800	LH EMERGENCY STOP PANEL	1	23	166659	APRON SIDE SPACER	2
7	166762	EMERGENCY STOP PANEL	1	24	166390	DRIVE SHAFT PANEL	2
8	166221	THIMBLE	2	25	166663	LH FRONT ANGLE	1
9	166899	CABLE CLAMP	4	26	166662	SHIELD	1
10	166888	SPRING FOR EMERGENCY STOP	3	27	166784	RUBBER SEAL	1
11	166826	EMERGENCY STOP CABLE	1	28	166703	STRAP	1
12	166830	RH SIDE PANEL TOP	1	29	166113	HOSE HOLDER	1
13	166586	RH SIDE PANEL	1	30	166093	HOSE COUPLING HOLDER	1
14	166591	RH EMERGENCY STOP PANEL	1	31	166780	CAP - NO HOLE	1
15	166600	GEAR BOX BRACE	1	32	166781	CLEAR TUBE	1
16	166605	RETURN PAN END	1	33	166783	CAP W/HOLE	1
17	166611	CROSS APRON PAN END	1	34	166935	CLAMP	1

1660HD - HOUSING COMPONENTS



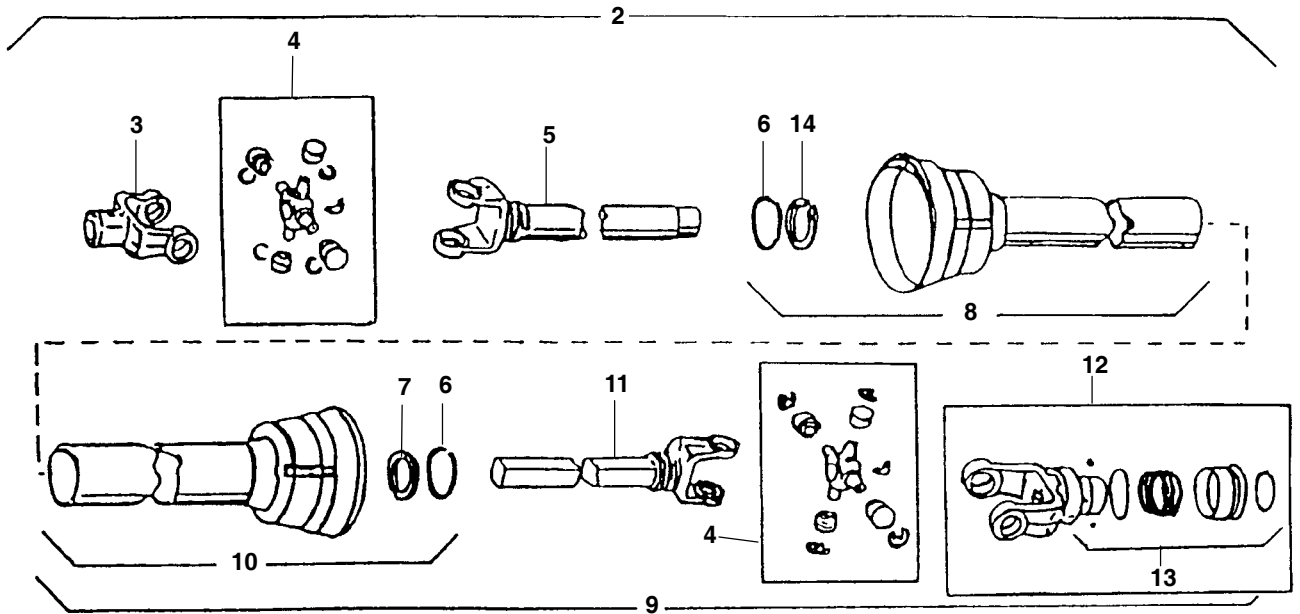
Ref. No.	Part No.	Description	Qty. Req.	Ref. No.	Part No.	Description	Qty. Req.
1	166086	U-BOLT	1	18	166747	FRONT MAIN PANEL	1
2	166866	SPRING FOR SHIELD	1	19	166628	CROSS APRON PAN	1
3	166658	PLASTIC BEATER GUARD	1	20	166749	RETURN PAN	1
4	166944	LH SIDE PANEL TOP	1	21	166641	RH RETURN PAN ANGLE	1
5	166773	LH SIDE PANEL	1	22	166647	LH RETURN PAN ANGLE	1
6	166800	LH EMERGENCY STOP PANEL	1	23	166659	APRON SIDE SPACER	2
7	166762	EMERGENCY STOP PANEL	1	24	166390	DRIVE SHAFT PANEL	2
8	166221	THIMBLE	2	25	166663	LH FRONT ANGLE	1
9	166899	CABLE CLAMP	4	26	166662	SHIELD	1
10	166888	SPRING FOR EMERGENCY STOP	3	27	166718	RUBBER SEAL	1
11	166826	EMERGENCY STOP CABLE	1	28	166703	STRAP	1
12	166945	RH SIDE PANEL TOP	1	29	166113	HOSE HOLDER	1
13	166586	RH SIDE PANEL	1	30	166093	HOSE COUPLING HOLDER	1
14	166591	RH EMERGENCY STOP PANEL	1	31	166780	CAP - NO HOLE	1
15	166600	GEAR BOX BRACE	1	32	166781	CLEAR TUBE	1
16	166605	RETURN PAN END	1	33	166783	CAP W/HOLE	1
17	166611	CROSS APRON PAN END	1	34	166935	CLAMP	1

1660 - LIGHTS



Ref. No.	Part No.	Description	Qty. Req.	Ref. No.	Part No.	Description	Qty. Req.
1	119514	RETRACTABLE CORD	1	6	166199	RED LIGHT	2
		(ACCESSORY OPTION)		7	166198	AMBER LIGHT	2
2	166965a	FRONT HARNESS	1	8	166720	RUBBER LIGHT MOUNT	4
3	170670a	LIGHTING MODULE	1	9	059060	4 WAY SOCKET	1
4	166324	LIGHT BRACKET	2	10	112917	PLUG/ 7-PIN W/CABLE	1
5	170673	Y CONNECT HARNESS	1	11	059070	PLUG/4 WAY TRAILER	1

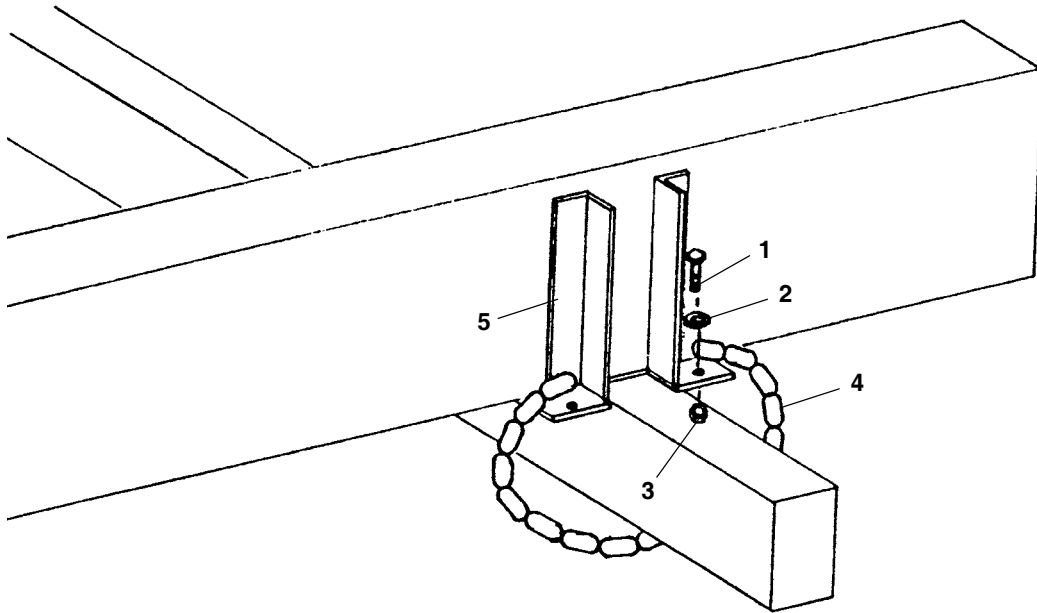
a) Not supplied on Truck Mounted units.



Ref. No.	Part No.	Description	Qty. Req.	Ref. No.	Part No.	Description	Qty. Req.
2	166807	MCHNE HALF PTO W/SHIELD (HD) . . .	1	9	166160	TRACTOR HALF PTO (HD)	1
3	166157	END YOKE MACHINE HALF (HD)	1	10	166771	OUTER GUARD	1
4	005870	CROSS KIT	2	11	166161	YOKE & SHAFT (HD)	1
5	166159	YOKE & TUBE	1	12	092052	SPRING LOCK YOKE	1
6	166081	BEARING RETAINER	2	13	086925	SPRING LOCK REPAIR KIT	1
7	166870	NYLON BEARING	1	14	166878	NYLON BEARING	1
8	166879	INNER GUARD FOR S372 PTO	1	*	145011	SAFETY MANUAL	AR

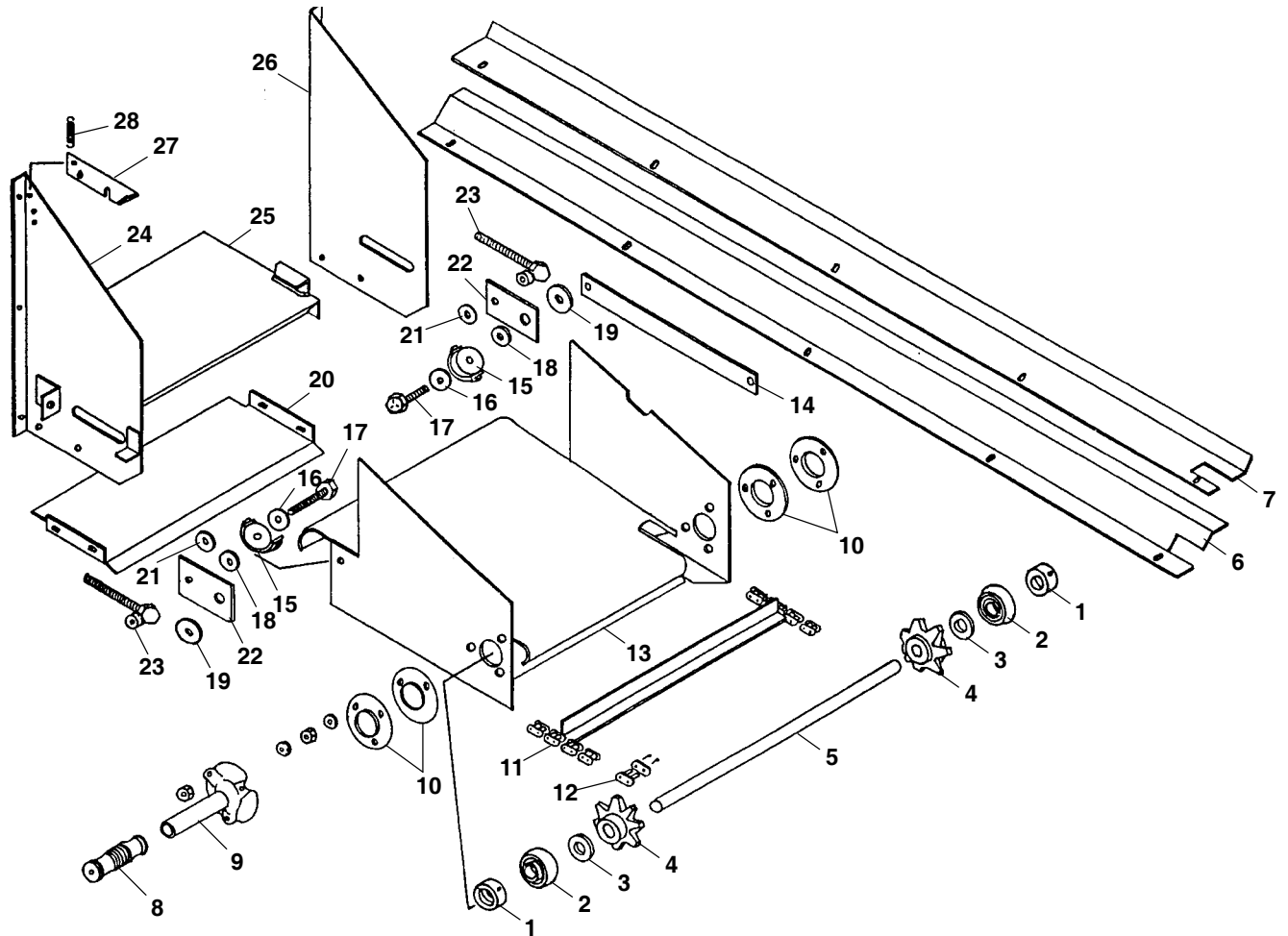
* Not Shown

1660 - TIE DOWN KIT



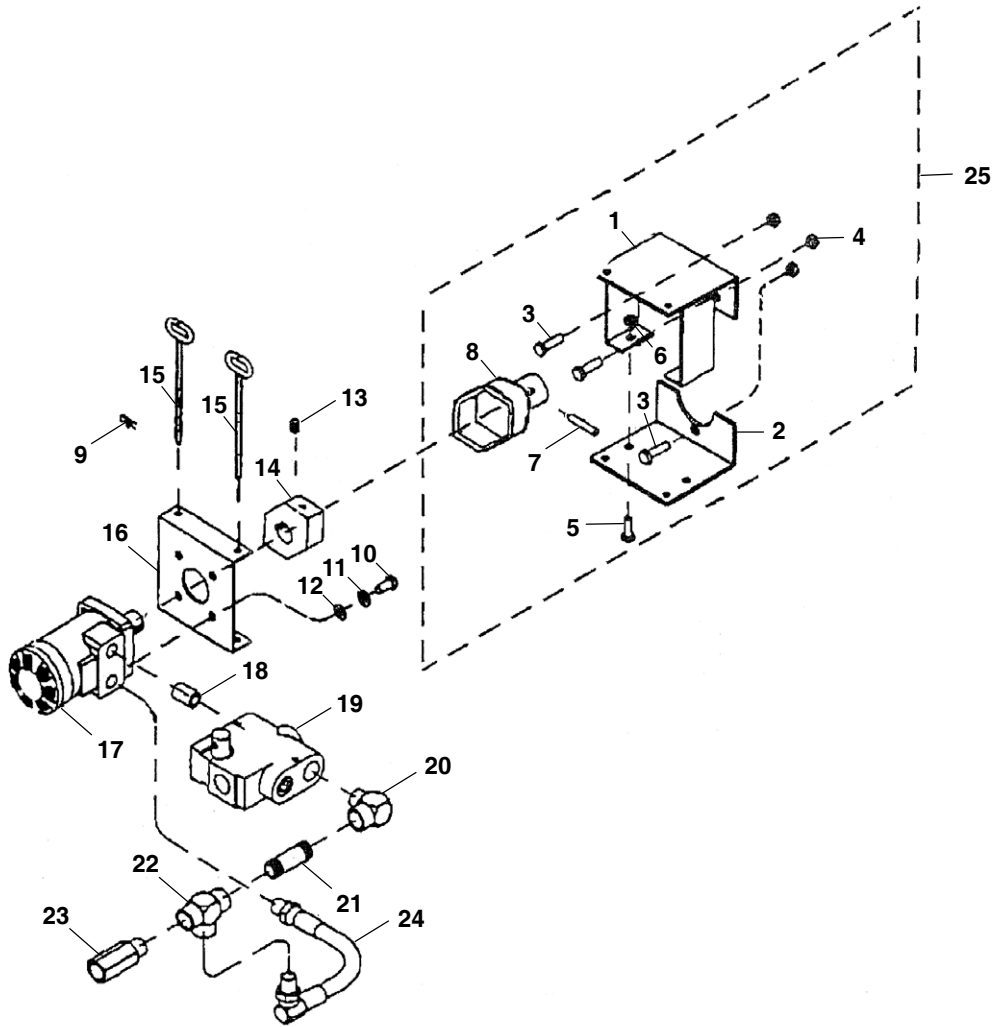
Ref. No.	Part No.	Description	Qty. Req.	Ref. No.	Part No.	Description	Qty. Req.
1	650453	CS 1/2X1-1/2	8	4	166726	1/4 TIE DOWN CHAIN	4
2	651148	FW 1/2	8	5	166727	TIE DOWN BRACKET	4
3	071706	LN T 1/2 CZY	8				

1660 - OPTIONAL 12" EXTENSION



Ref. No.	Part No.	Description	Qty. Req.	Ref. No.	Part No.	Description	Qty. Req.
1	520084	1" BEARING COLLAR	2	15	166682	CHAIN SLIDE ASSEMBLY	2
2	520063	BEARING	2	16	166217	WASHER	2
3	166906	SPACER 1-7/8 X 1-1/32 X 9/16	2	17	650569	CS 1/2X1-3/4	2
4	166881	8T SPROCKET	2	18	166683	EXT. SHELL HINGE	2
5	166674	EXT IDLER SHAFT	1	19	166684	EXT. WASHER	2
6	166675	CROSS CONV FRONT HOLD DOWN	1	20	166685	PAN EXTENSION	1
7	166677	CROSS CONV BACK HOLD DOWN	1	21	166686	EXT.SHELL SPACER	2
8	166851	HANDLE GRIP	1	22	166688	EXT. SIDE PLATES	2
9	166678	HANDLE	1	23	166689	EXT. TIGHTENER BOLT	2
10	166080	BEARING FLANGE	4	24	166690	EXTENSION FRONT PANEL	1
11	166679	CROSS CONVEYOR	1	25	166691	EXT SLIDER PAN ASSEMBLY	1
12	081311	PLAIN CONNECTOR	2	26	166692	EXTENSION BACK PANEL	1
13	166680	MAIN SHELL	1	27	166693	EXTENSION LATCH	1
14	166681	EXT. BRACE	1	28	166062	SPRING	1

1660 - OPTIONAL HYDRAULIC DRIVE



Ref. No.	Part No.	Description	Qty. Req.	Ref. No.	Part No.	Description	Qty. Req.
1	166764	TOP MOTOR HANGER	1	15	166767	MOTOR UNIT MOUNT PIN	2
2	166765	BOTTOM MOTOR HANGER	1	16	166766	HYDRAULIC MOTOR MOUNT	1
3	650062	CS 3/8x1-1/4	2	17	166095	HYDRAULIC MOTOR	1
4	653010	HN 3/8	2	18	660029	NIPPLE/CLOSE 1/2	1
5	650545	CS 5/16x1-1/4	2	19	048968	CONTROL/FLOW	1
6	653007	HN 5/16	2	20	058654	ELBOW/STEEL STREET 1/2 X 90 D	1
7	116353	PIN/SPIRAL	1	21	660087	NIPPLE/PIPE 1/2x2	1
8	166779	SECONDARY DRIVE	1	22	660023	TEE/PIPE .500	1
9	166166	HAIR PIN	2	23	067457	CHECK VALVE 1/2 DIA	1
10	650488	CS 3/8x3/4	4	24	166877	HOSE 1/2" x 10-1/2"	1
11	654026	LW 3/8	4	25	166768a	UNIT DRIVE KIT	AR
12	654006	FW 3/8	4	a) Consists of 166764 TOP MOTOR HANGER, 166765 BOTTOM MOTOR HANGER, 650062 CS 3/8x1-1/4, 653010 HN 3/8, 650545 CS 5/16x1-1/4, 653007 HN 5/16, 116353 PIN/SPIRAL, and 166779 SECONDARY DRIVE.			
13	650201	SHSS CP 5/16x5/16	1				
14	166778	PRIMARY DRIVE	1				

Index

A

Apron drive, 6–7

B

Beaters, 6–7

Box components, 21–24

C

Cross apron and drive, 8–9

Cross conveyor clutch, Belt drive,
12–13

D

Decal application, 2

Decal locations, 2–5

G

Gearbox

Bevel, 26

Worm, 27

H

Housing components, 28–29

Hydraulic components, Ross Mo-
tor, 20

I

Introduction, 2

L

Lights, 30

O

Optional 12” extension, 33

Optional hydraulic drive, 34

P

Paint notice, 2

PTO parts, 31

R

Rear unload assembly, 14–19

S

Shields, beater clutch belt drive,
10–11

T

Tie down kit, 32

1660 & 1660HD - NUMERICAL INDEX

Part No.	Page No.	Ref. No.	Part No.	Page No.	Ref. No.	Part No.	Page No.	Ref. No.	Part No.	Page No.	Ref. No.
L94790	07	01	092052	31	12	166070	13	18	166111	19	58
H195A	07	05	093020	02	37	166073	15	51	166112	07	60
H8224	07	11	093202	02	17	166073	17	04	166112	15	70
H728A	09	18	093366	02	39	166074	26	04	166113	28	29
D9130	09	21	093367	02	20	166074	27	02	166113	29	29
180-32147	07	09	093444	02	07	166075	26	10	166116	15	16
360-17392	13	43	093519	20	04	166075	27	22	166116	19	34
180-13128	07	28	093653	02	12	166076	15	57	166120	15	40
180-13128	27	12	094373	02	19	166076	19	08	166120	19	17
180-10773	26	16	094762	13	25	166077	07	56	166147	11	21
170-10463	27	24	094914	02	26	166077	15	67	166150	26	19
005870	31	04	094920	02	03	166077	19	52	166151	27	10
048968	34	19	094921	02	04	166078	26	03	166153	13	05
049073	15	33	094922	02	05	166080	09	06	166154	07	24
049073	19	21	094923	02	06	166080	13	12	166155	13	50
049073	20	00	095026	07	54	166080	33	10	166157	31	03
049498	20	01	095026	11	46	166081	31	06	166159	31	05
049499	20	02	116353	15	28	166082	15	38	166160	31	09
050023	20	03	116353	34	07	166082	19	22	166161	31	11
053827	26	18	119514	30	01	166084	15	32	166163	07	30
053827	27	16	119548	02	32	166086	11	40	166164	09	38
056230	15	22	119661	02	30	166086	15	55	166165	11	30
056230	19	57	124330	11	19	166086	28	01	166166	34	09
058654	15	60	124331	13	40	166086	29	01	166170	11	13
058654	19	20	138245	27	13	166087	27	07	166176	09	35
058654	34	20	143007	02	18	166089	27	21	166177	09	36
059060	30	09	145011	31	00	166093	28	30	166180	07	49
066172	09	23	145216	02	31	166093	29	30	166180	15	12
067457	15	63	145217	02	11	166094	09	29	166180	17	48
067457	19	19	152391	07	47	166095	34	17	166182	07	49
067457	34	23	152391	15	11	166097	09	10	166182	15	12
067847	13	31	152391	17	49	166097	09	10	166182	17	48
071706	11	25	152710	17	49	166097	15	69	166189	07	46
071706	13	27	152710	07	48	166098	07	04	166189	07	46
071706	13	27	152710	15	72	166099	15	58	166189	15	10
071706	32	03	152710	17	50	166099	19	55	166189	17	47
074879	15	42	163957	02	09	166099	19	55	166194	07	31
074879	19	11	166059	02	09	166100	15	23	166195	09	20
074879	19	11	166059	07	22	166100	19	56	166197	09	30
078262	11	23	166059	15	46	166101	27	17	166197	09	30
080863	07	10	166059	15	46	166101	27	17	166197	11	64
080863	07	10	166059	19	44	166104	07	37	166198	11	64
081311	09	37	166060	13	09	166105	15	39	166198	30	07
081311	33	12	166062	33	28	166105	19	16	166199	30	06
082023	15	41	166065	33	28	166105	19	16	166200	15	44
082023	15	41	166065	07	57	166107	13	14	166200	19	42
082083	19	15	166065	15	68	166108	09	32	166201	19	42
086925	31	13	166065	19	54	166108	11	63	166201	15	20
091050	02	01	166068	19	54	166108	11	63	166201	19	30
091444	02	25	166068	15	34	166109	15	61	166201	19	41
091444	02	25	166068	19	32	166111	15	24	166201	19	41
									166203	15	45

1660 & 1660HD - NUMERICAL INDEX

Part No.	Page No.	Ref. No.	Part No.	Page No.	Ref. No.	Part No.	Page No.	Ref. No.	Part No.	Page No.	Ref. No.
166203	19	43	166360	17	03	166565	07	13	166650	15	48
166208	26	08	166366	07	59	166586	28	13	166650	19	61
166209	26	09	166366	15	65	166586	29	13	166658	28	03
166211	26	11	166366	19	12	166587	11	15	166658	29	03
166217	15	59	166367	15	25	166588	11	16	166659	28	23
166217	19	39	166367	19	33	166589	11	17	166659	29	23
166217	33	16	166368	15	71	166591	28	14	166661	07	53
166220	11	37	166372	15	02	166591	29	14	166662	28	26
166221	28	08	166372	25	01	166592	11	27	166662	29	26
166221	29	08	166373	15	03	166593	11	28	166663	28	25
166223	13	45	166373	25	02	166594	11	29	166663	29	25
166224	13	46	166376	15	05	166595	11	31	166664	11	55
166225	15	56	166377	15	14	166596	11	32	166665	11	53
166226	11	43	166377	19	36	166597	11	33	166666	11	54
166226	13	36	166378	15	15	166598	11	34	166667	09	19
166228	27	08	166378	19	37	166599	11	35	166669	07	06
166229	27	20	166379	15	19	166600	28	15	166670	11	42
166230	27	23	166380	15	21	166600	29	15	166672	22	20
166231	27	00	166380	19	38	166601	11	36	166672	25	04
166262	24	03	166381	15	27	166602	11	38	166673	25	03
166265	17	02	166382	15	29	166603	11	39	166674	33	05
166289	24	09	166384	22	09	166604	11	41	166675	33	06
166290	24	11	166388	15	01	166605	28	16	166676	07	07
166320	15	50	166389	15	26	166605	29	16	166677	33	07
166320	19	62	166390	15	06	166606	11	52	166678	33	09
166322	15	52	166390	28	24	166607	26	02	166679	33	11
166322	17	03	166390	29	24	166608	26	15	166680	33	13
166323	15	53	166392	15	07	166609	26	00	166681	33	14
166324	15	54	166394	15	09	166610	27	11	166682	33	15
166324	30	04	166395	15	17	166611	28	17	166683	33	18
166325	22	15	166395	19	26	166611	29	17	166684	33	19
166329	24	02	166396	15	18	166612	27	15	166685	33	20
166330	07	55	166396	19	27	166615	22	02	166686	33	21
166331	15	64	166397	15	31	166618	22	01	166687	07	08
166331	19	13	166397	17	05	166621	22	03	166688	33	22
166332	15	43	166398	15	35	166621	25	04	166689	33	23
166332	19	09	166398	17	51	166625	22	04	166690	33	24
166333	22	16	166399	15	36	166628	28	19	166691	33	25
166335	15	30	166399	19	46	166628	29	19	166692	33	26
166336	15	66	166400	15	37	166631	22	10	166693	33	27
166339	15	47	166400	19	45	166634	22	11	166694	22	13
166339	19	35	166537	09	28	166637	22	12	166696	07	16
166340	15	08	166541	07	03	166641	28	21	166701	11	26
166340	19	40	166542	26	13	166641	29	21	166703	15	04
166341	22	08	166545	26	17	166647	28	22	166703	28	28
166360	15	52	166546	26	07	166647	29	22	166703	29	28
									166704	11	58

1660 & 1660HD - NUMERICAL INDEX

Part No.	Page No.	Ref. No.	Part No.	Page No.	Ref. No.	Part No.	Page No.	Ref. No.	Part No.	Page No.	Ref. No.
166705	11	59	166756	11	01	166822	09	12	166880	07	33
166706	11	61	166757	11	05	166823	09	13	166881	33	04
166707	11	10	166758	11	06	166824	09	14	166882	07	36
166708	11	20	166759	11	07	166825	09	15	166884	07	42
166709	22	01	166761	07	27	166826	28	11	166885	15	13
166710	22	02	166762	28	07	166826	29	11	166885	19	23
166711	22	03	166762	29	07	166827	09	25	166887	07	50
166711	25	04	166764	34	01	166828	09	31	166888	19	24
166713	28	04	166765	34	02	166829	09	34	166888	28	10
166714	22	04	166766	34	16	166830	28	12	166888	29	10
166715	22	10	166767	34	15	166831	11	03	166889	09	22
166716	22	11	166768	34	25	166832	11	08	166890	11	11
166717	22	12	166769	09	33	166833	11	09	166891	09	24
166718	29	27	166770	09	26	166834	07	50	166892	22	18
166720	30	08	166771	31	10	166835	22	14	166895	07	39
166726	32	04	166772	22	21	166836	22	07	166897	26	12
166727	32	05	166773	28	05	166839	22	17	166897	27	01
166728	11	67	166773	29	05	166840	22	19	166898	13	44
166729	07	23	166774	07	32	166841	22	06	166899	28	09
166730	11	44	166775	11	69	166842	22	05	166899	29	09
166731	11	45	166778	34	14	166844	19	25	166904	27	05
166732	13	02	166779	34	08	166845	13	42	166905	07	34
166733	13	04	166780	28	31	166846	11	48	166906	33	03
166734	13	11	166780	29	31	166847	11	49	166907	07	58
166735	13	07	166781	28	32	166848	11	50	166907	19	53
166736	13	10	166781	29	32	166849	11	51	166910	11	56
166737	13	03	166783	28	33	166851	33	08	166912	13	38
166738	13	08	166783	29	33	166853	27	19	166915	13	39
166739	13	33	166784	28	27	166854	27	09	166916	09	02
166741	11	68	166793	07	35	166855	09	17	166935	28	34
166742	13	17	166796	07	38	166855	13	13	166935	29	34
166743	13	34	166798	07	40	166855	13	13	166938	22	22
166744	13	35	166799	07	41	166866	28	02	166938	25	05
166745	07	25	166800	07	41	166866	29	02	166939	22	22
166746	13	15	166800	28	06	166867	11	12	166939	25	05
166746	13	15	166800	29	06	166867	11	12	166939	25	05
166747	28	18	166800	29	06	166868	11	22	166941	17	01
166747	28	18	166802	07	43	166868	11	22	166941	17	01
166747	29	18	166802	07	43	166869	11	24	166943	17	07
166747	29	18	166803	07	44	166870	31	07	166946	19	28
166748	09	16	166804	07	45	166870	31	07	166946	19	28
166748	09	16	166804	07	45	166871	07	12	166947	19	29
166749	28	20	166807	31	02	166871	07	12	166947	19	29
166749	28	20	166807	31	02	166872	11	60	166948	17	06
166749	29	20	166814	07	51	166872	11	60	166948	17	06
166749	29	20	166814	07	51	166873	07	19	166948	19	31
166750	13	48	166815	07	52	166873	07	19	166948	19	31
166750	13	48	166815	07	52	166874	07	29	166949	15	74
166751	11	47	166816	09	01	166874	07	29	166949	15	74
166751	11	47	166816	09	01	166875	13	06	166949	19	60
166752	07	26	166818	09	03	166875	13	06	166949	19	60
166752	07	26	166818	09	03	166876	09	27	166950	15	73
166753	11	04	166819	09	04	166876	09	27	166950	15	73
166753	11	04	166819	09	04	166877	34	24	166950	19	59
166754	13	47	166820	09	08	166877	34	24	166950	19	59
166754	13	47	166820	09	08	166878	31	14	166951	24	01
166755	13	49	166821	09	09	166878	31	14	166951	24	01
166755	13	49	166821	09	09	166879	31	08	166952	24	04
166755	13	49	166821	09	09	166879	31	08	166952	24	04

1660 & 1660HD - NUMERICAL INDEX






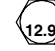
Part No.	Page No.	Ref. No.	Part No.	Page No.	Ref. No.	Part No.	Page No.	Ref. No.	Part No.	Page No.	Ref. No.
166953	24	05	170537	02	08	520084	13	37	650681	07	17
166954	24	06	170538	02	28	520084	33	01	650863	11	57
166955	24	07	170539	02	29	520085	07	02	650927	20	06
166956	24	08	170541	02	36	650028	09	39	651148	13	41
166957	24	10	170542	02	38	650062	11	65	651148	32	02
166958	24	10	170663	07	18	650062	34	03	651156	13	21
166959	24	12	170663	07	20	650201	34	13	651160	15	49
166960	24	13	170670	30	03	650210	19	18	651571	11	02
166961	24	14	170763	30	05	650215	27	06	653007	34	06
166965	30	02	171545	25	04	650453	32	01	653010	07	14
170318	02	02	500037	11	14	650488	34	10	653010	13	22
170356	02	41	500057	09	00	650490	11	66	653010	34	04
170520	02	35	500057	19	10	650490	13	19	653038	13	24
170521	02	22	500060	09	00	650490	27	18	654006	07	15
170523	02	21	500092	07	21	650495	11	18	654006	13	32
170524	02	24	500195	19	14	650513	09	11	654006	34	12
170525	02	15	520032	26	06	650513	13	28	654026	13	23
170526	02	14	520032	27	04	650513	20	05	654026	34	11
170527	02	13	520033	26	05	650513	26	01	660023	34	22
170528	02	34	520033	27	03	650513	26	14	660027	15	62
170529	02	33	520063	09	07	650513	27	14	660029	34	18
170530	02	23	520063	13	16	650545	34	05	660087	34	21
170531	02	16	520063	33	02	650569	33	17	808839	25	06
170532	02	27	520084	09	05	650579	13	20	808840	25	06
170534	02	10	520084	11	62	650594	13	26	808841	25	06

NOTES

TORQUE SPECIFICATIONS

NOTE: Use these torque values when tightening **GEHL** hardware (excluding: locknuts and self-tapping, thread-forming and sheet metal screws) unless specified otherwise.

All torque values are in Lb-Ft except those marked with an * which are Lb-In
(For metric torque value Nm, multiply Lb-Ft value by 1.355 or Lb-In value by 0.113)

Unified National Thread	Grade 2 		Grade 5 		Grade 8 	
	Dry	Lubed	Dry	Lubed	Dry	Lubed
8-32 8-36	19* 20*	14* 15*	30* 31*	22* 23*	41* 43*	31* 32*
10-24 10-32	27* 31*	21* 23*	43* 49*	32* 36*	60* 68*	45* 51*
1/4-20 1/4-28	66* 76*	50* 56*	9 10	75* 86*	12 14	9 10
5/16-18 5/16-24	11 12	9	17 19	13 14	25	18 20
3/8-16 3/8-24	20 23	15 17	30 35	23 25	45 50	35
7/16-14 7/16-20	32 36	24 27	50 55	35 40	70 80	55 60
1/2-13 1/2-20	50 55	35 40	75 90	55 65	110 120	80 90
9/16-12 9/16-18	70 80	55 60	110 120	80 90	150 170	110 130
5/8-11 5/8-18	100 110	75 85	150 180	110 130	220 240	170 180
3/4-10 3/4-16	175 200	130 150	260 300	200 220	380 420	280 320
7/8-9 7/8-14	170 180	125 140	430 470	320 360	600 660	460 500
1-8 1-14	250 270	190 210	640 710	480 530	900 1000	680 740
Metric Course Thread	Grade 8.8 		Grade 10.9 		Grade 12.9 	
	Dry	Lubed	Dry	Lubed	Dry	Lubed
M6-1	8	6	11	8	13.5	10
M8-1.25	19	14	27	20	32.5	24
M10-1.5	37.5	28	53	39	64	47
M12-1.75	65	48	91.5	67.5	111.5	82
M14-2	103.5	76.5	145.5	108	176.5	131
M16-2	158.5	117.5	223.5	165.5	271	200

GEHL®

Gehl Company 143 Water Street, P.O. Box 179, West Bend, WI 53095-0179 U.S.A.
(www.gehl.com)