

Form No.
907534
Revision B

1330

Truck Mounted Scavenger[®] Spreader

PARTS MANUAL

GEHL[®] AGRICULTURE

Introduction

When ordering service parts, specify the correct part number, full description, quantity required, the unit model number and serial number.

The Spreader model and serial numbers are on a plate located on the front, left corner of the Tank. "Right" and "left" are determined from a position standing behind the Spreader and facing in the direction of travel. From this position, the Expeller is on the "right" side.

GEHL® Company reserves the right to make changes or improvements in the design or construction of any part of the unit without incurring the obligation to install such changes on any previously delivered units.

Refer to the abbreviations table located on this page for the various fastener descriptions. Standard attaching hardware torque values are also provided on the inside back cover.

Items shown in the parts list that do not have Reference Numbers are shown for reference purposes only and are NOT available for purchase.

Unless otherwise specified, all cap screws or bolts are Grade 5, zinc plated; hexagon nuts for Grade 5 screws or bolts are Grade B; hexagon nuts for other screws or bolts are Grade A.

NOTE: *The following abbreviations may used herein:*

ASSD	- Assembled
ASSY	- Assembly
CB	- Carriage Bolt
CCW	- Counterclockwise
CP	- Cotter Pin
CS	- Cap Screw (Hexagon Head)
CTR	- Center
CW	- Clockwise
DEG	- Degree

DIA	- Diameter
FCS	- Flanged Cap Screw
FHMS	- Flat Head Machine Screw
FL	- Flanged
FLN	- Flanged Lock Nut (Hexagon)
FLS	- Flanged Lock Screw (Hexagon)
FW	- Flat Washer
GA	- Gauge
GR	- Grade
HD	- Hard or Head
HN	- Hex Nut
INCL	- Includes
JT	- Joint
LFLN	- Large Flanged Lock Nut (Hexagon)
LG	- Large
LH	- Left Hand
LN	- Lock Nut
LT	- Left
LW	- Lock Washer
M	- Metric
MM/mm	- Millimeter
NF	- National Fine
NS	- Not Serviced
PB	- Plow Bolt
PTO	- Power Take Off
RH	- Right Hand
RHMS	- Round Head Machine Screw
RPM	- Revolutions Per Minute
RT	- Right
SERR	- Serrated
SHCS	- Socket Head Cap Screw
SHSS	- Socket Head Set Screw
SN	- Serial Number or Slotted Nut
SQ	- Square
T	- Tooth or Teeth
TFS	- Thread Forming Screw
THMS	- Truss Head Machine Screw
THRD	- Thread
WLDMT	- Weldment

TABLE OF CONTENTS

Subject	Page No.
Introduction	Inside Front Cover
Decal Locations	2-7
Auger, Liner & Slides	8-9
Auger & Expeller Drive	10-11
Expeller & Discharge Gate	12-13
Hydraulics	14-15
Guards & Shields	16-17
Component Breakdowns	18-21
Hydraulic Cylinders	18
Auger	19
Gearbox	20-21
Options & Accessories	22-34
Solids Spill Guards	22
Splash Guards & Rails	23
Hydraulic Lid Kit	24-25
Light Kit	26
Fenders & Mud Flaps	27
Mechanical Drive Kit, 1:1	28
PTO, 1:1 & 2:1 Mechanical Drive Kits	29
Mechanical Drive Kit, 2:1	30-31
Transmission, 2:1	32
Hydraulic Control Kit	33-34
Hydraulic Control Kit Control Box	35
Chain Oiler	36-37
Index	38
Numerical Index	39-43
Hydraulic Fitting Data	44
Standard Hardware Torque specifications	Inside Back Cover

DECAL LOCATIONS

GENERAL INFORMATION

Decal locations information is provided to assist in the proper selection and application of new decals, in the event the original decals become damaged or the machine is repainted. Refer to the listing for the illustration reference number, part number, description and quantity of each decal provided in the kit. Refer to the appropriate illustrations for replacement locations.

NOTE: Refer to the *SAFETY* chapter for information on the safety decals in the decal kit.

To ensure proper selection for correct replacement decals, compare all of the various close-up location illustrations to your machine **BEFORE** starting to refinish the unit. Then circle each pictured decal (applicable to your machine) while checking off its part number in the listing. After you have verified all the decals needed for replacement, set aside unneeded decals for disposal.

NEW DECAL APPLICATION

Surfaces **MUST** be free from dirt, dust, grease and other foreign material before applying the new decal. To apply a solid-formed decal, remove the smaller portion of the decal backing paper and apply this part of the exposed adhesive backing to the clean surface while maintaining proper position and alignment. Slowly peel off the other portion of the backing paper while applying hand pressure to smooth out the decal surface.



ALWAYS observe safety precautions shown on decals. If decals become damaged, or if the unit is repainted, replace the decals. If repainting, **BE SURE** that **ALL** decals from the kits that apply to your machine are affixed to your unit.

PAINT NOTICE

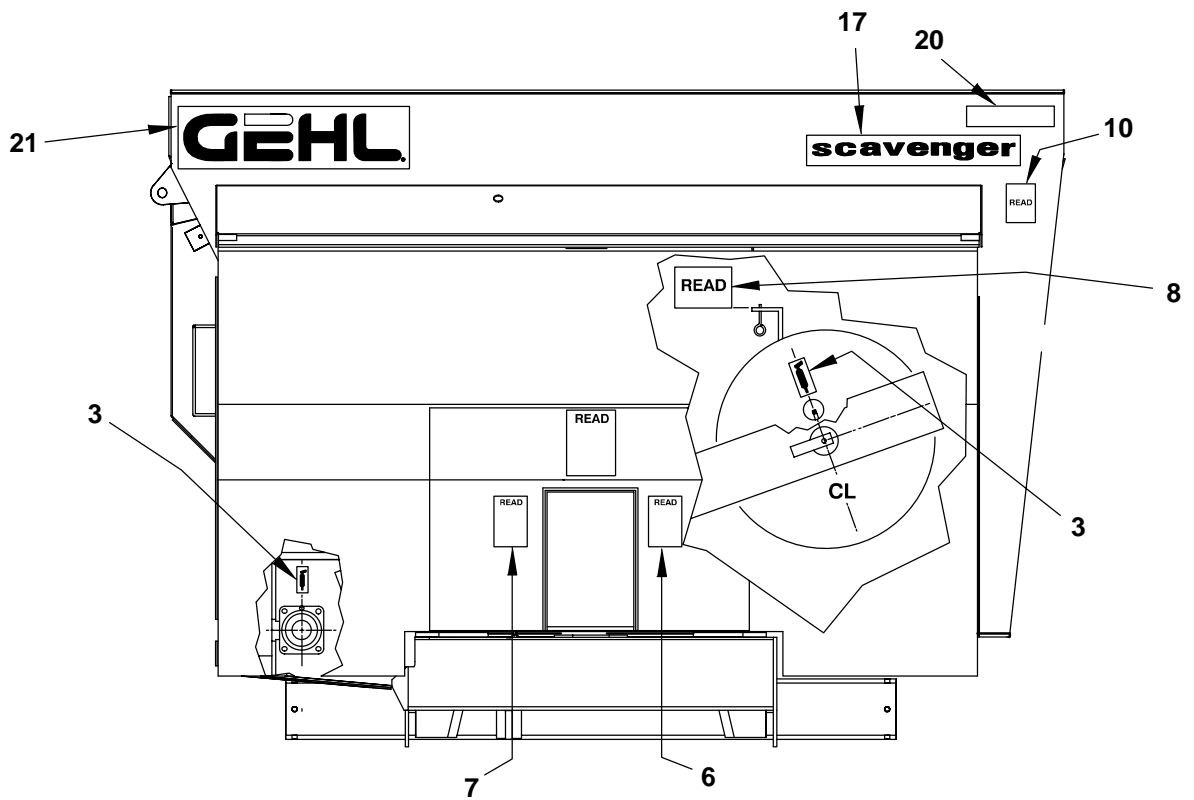
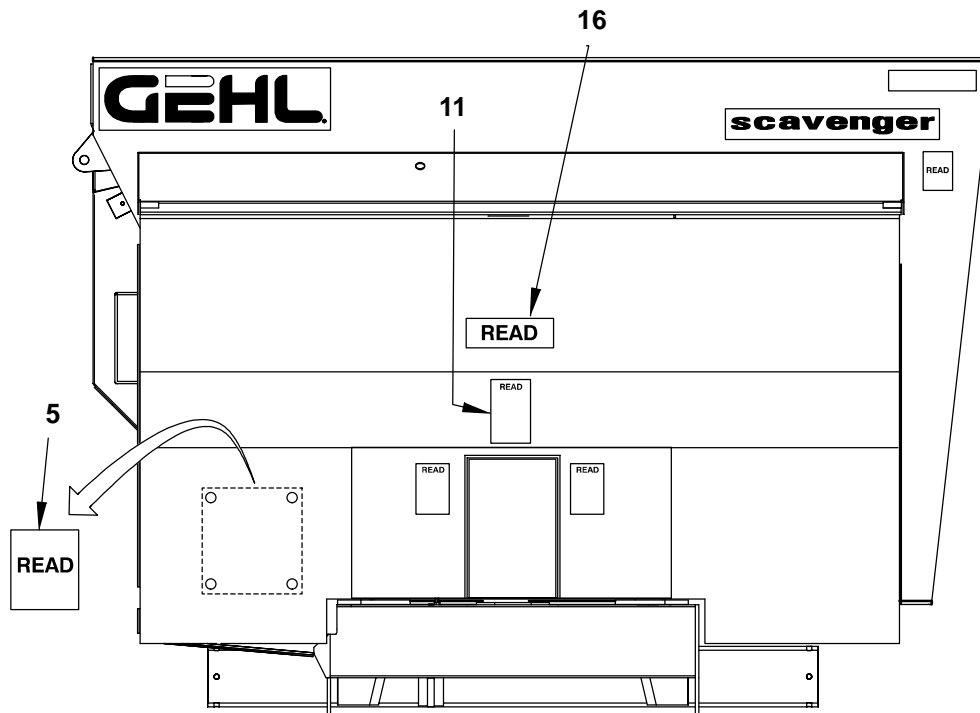
Use this list to order paint for refinishing:

906315	One Gal. AG Red
906324	One Qt. Light Grey
906316	6 (12 oz. Spray Cans) AG Red
906325	6 (12 oz. Spray Cans) Light Grey

The decal kit number for the 1330TM Scavenger Manure Spreader is 141263. The kit includes the following:

Ref. No.	Part No.	Description & Quantity
1	145216	Red Reflector Strip (2 Places)
2	091444	DANGER - Rotating Drive Line
3	093020	Lubrication Symbol (4 Places)
4	093208	Rotating Spiral Symbol
5	093366	IMPORTANT - Store Manual Here
6	093367	WARNING - Owner's Responsibility & Read Manual
7	093373	WARNING - General Safety Precautions
8	093457	WARNING - Keep Door Closed
9	093638	DANGER - Rotating Expeller (2 Places)
10	093639	DANGER - Manure Gas
11	093653	WARNING - Rotating Drive Line
12	094912	Colorbar (2 Places)
13	094913	GEHL (2 Places)
14	094951	Made in USA
15	115628*	Decal - All Model Numbers (2 Places)
16	120399	DANGER - Rotating Auger (3 Places)
17	120740	Scavenger Decal (2 Places)
18	141249	Decal - Patent
19	080247	No Step
20	145217	Amber Reflector Strip (5 Places)
21	122736	GEHL (2 Places)

* 115628 Model Number Decal covers all Scavenger model numbers.



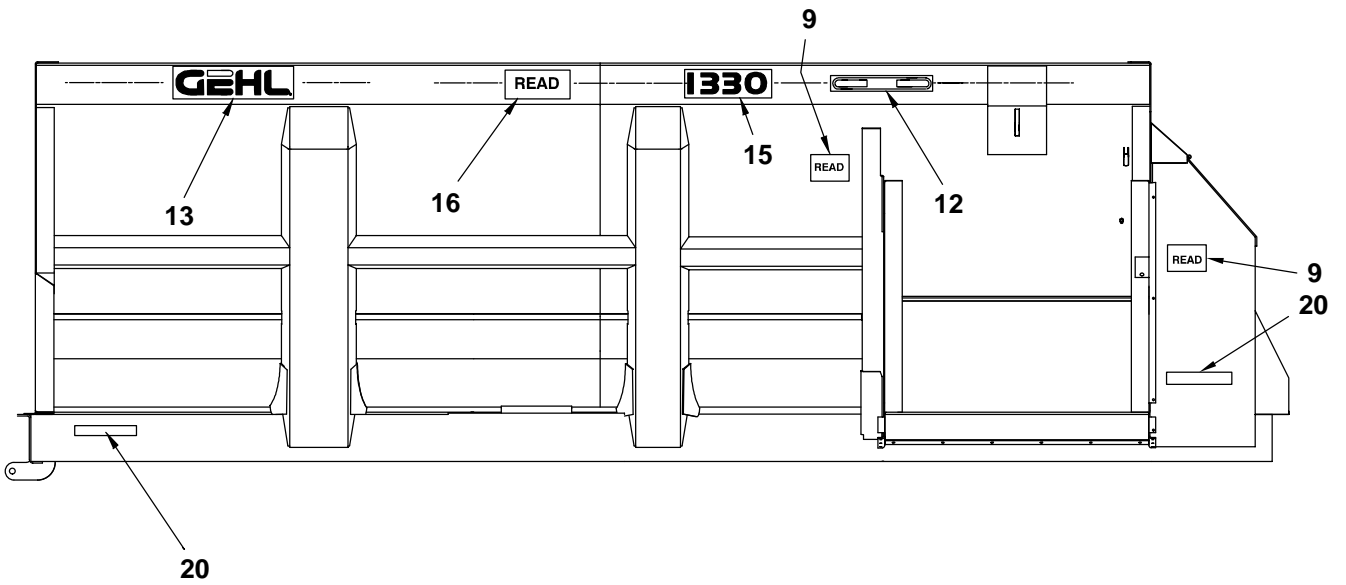
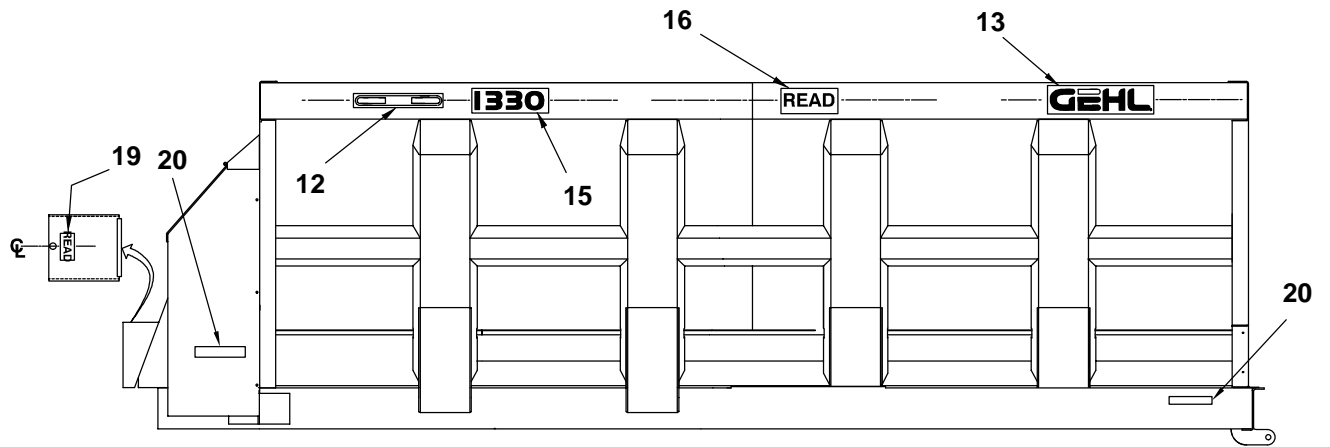
NOTE: *The decal kit parts list has been repeated for your convenience.*

Ref. Part

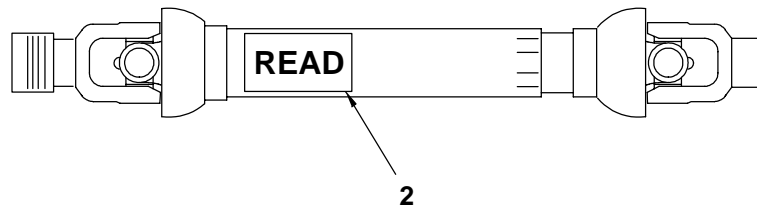
No.	No.	Description & Quantity
1	145216	Red Reflector Strip (2 Places)
2	091444	DANGER - Rotating Drive Line
3	093020	Lubrication Symbol (4 Places)
4	093208	Rotating Spiral Symbol
5	093366	IMPORTANT - Store Manual Here
6	093367	WARNING - Owner's Responsibility & Read Manual
7	093373	WARNING - General Safety Precautions
8	093457	WARNING - Keep Door Closed
9	093638	DANGER - Rotating Expeller (2 Places)

10	093639	DANGER - Manure Gas
11	093653	WARNING - Rotating Drive Line
12	094912	Colorbar (2 Places)
13	094913	GEHL (2 Places)
14	094951	Made in USA
15	115628*	Decal - All Model Numbers (2 Places)
16	120399	DANGER - Rotating Auger (3 Places)
17	120740	Scavenger Decal (2 Places)
18	141249	Decal - Patent
19	080247	No Step
20	145217	Amber Reflector Strip (5 Places)
21	122736	GEHL (2 Places)

*** 115628 Model Number Decal covers all Scavenger model numbers.**



Optional PTO



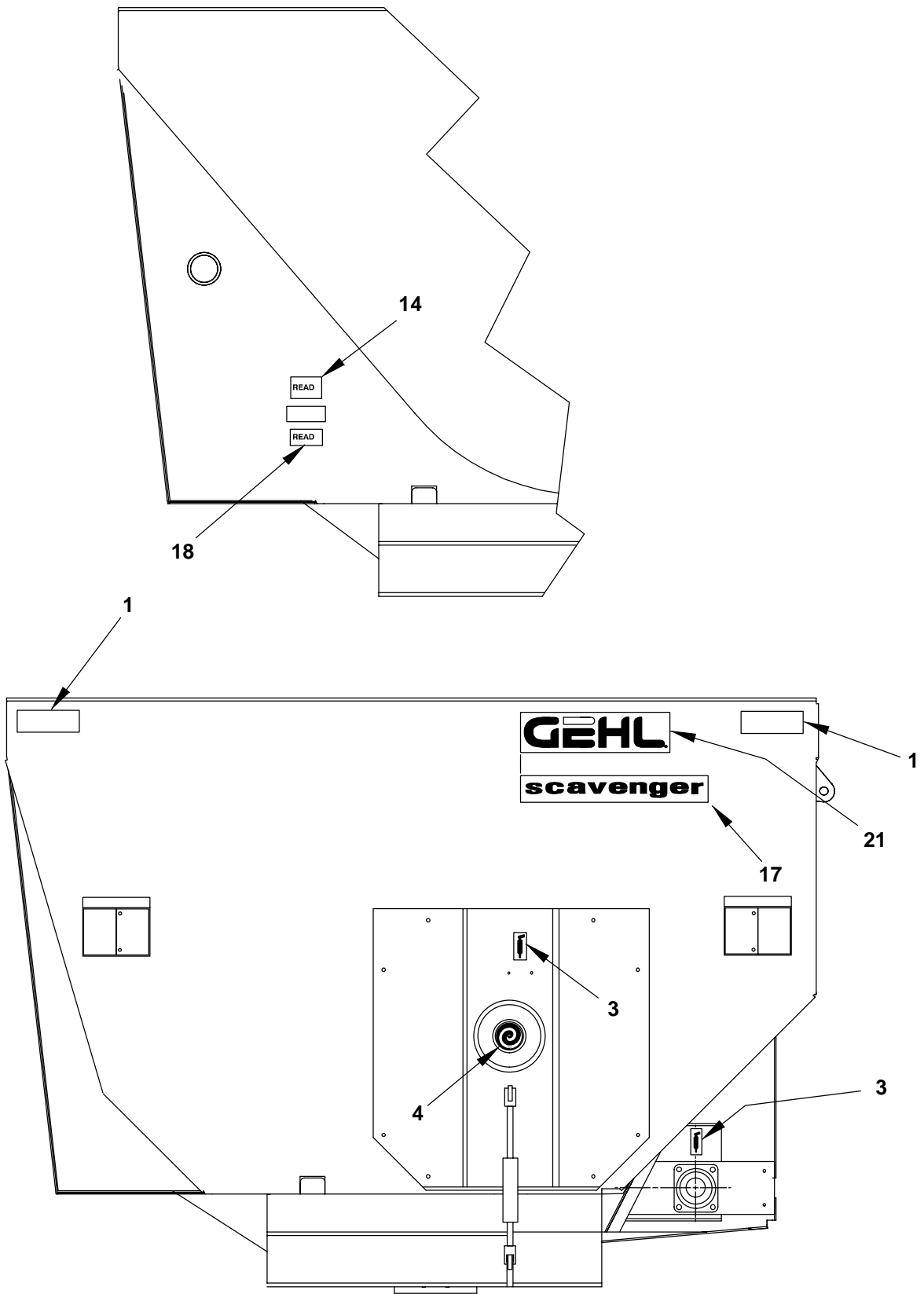
NOTE: *The decal kit parts list has been repeated for your convenience.*

Ref. Part

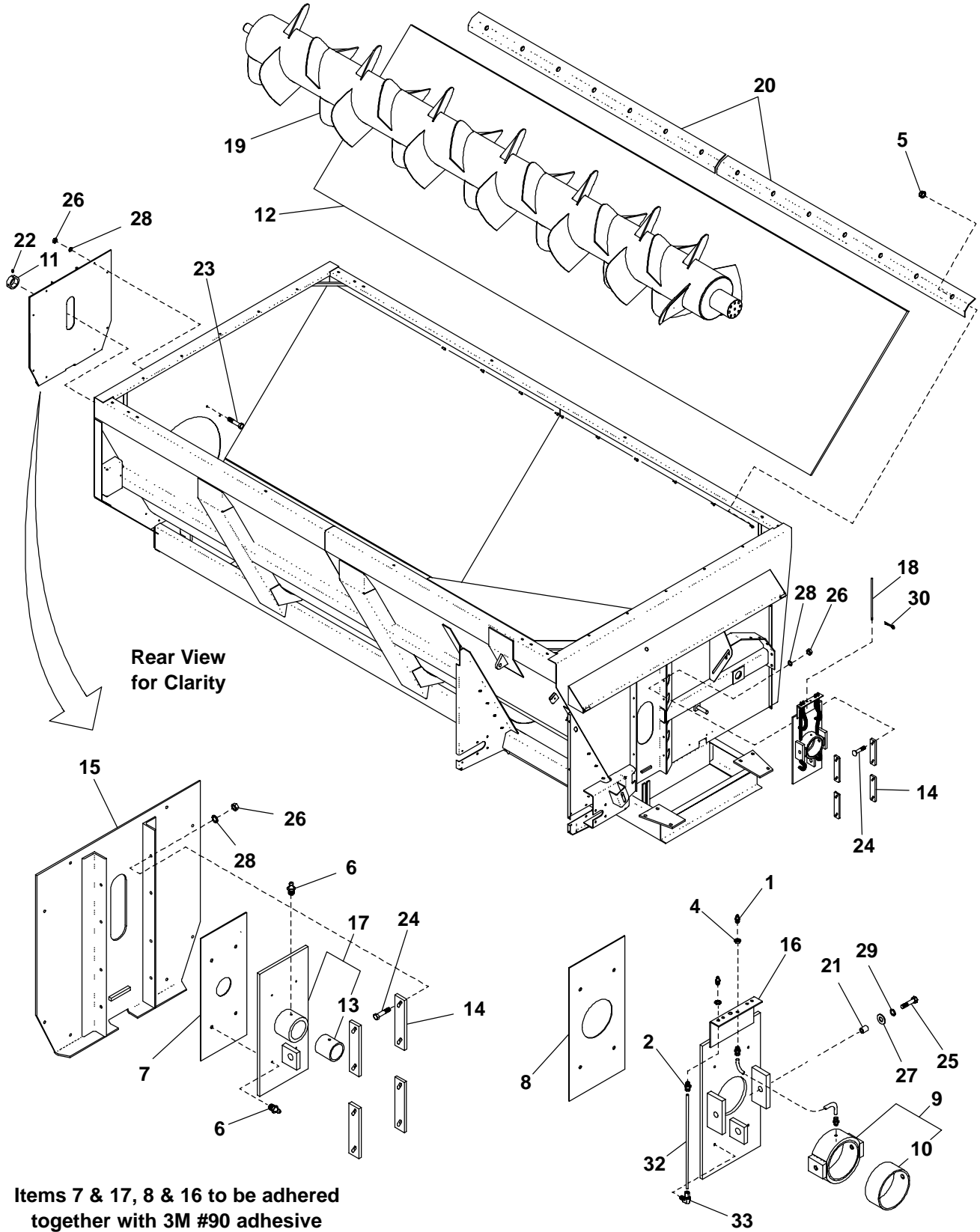
No.	No.	Description & Quantity
1	145216	Red Reflector Strip (2 Places)
2	091444	DANGER - Rotating Drive Line
3	093020	Lubrication Symbol (4 Places)
4	093208	Rotating Spiral Symbol
5	093366	IMPORTANT - Store Manual Here
6	093367	WARNING - Owner's Responsibility & Read Manual
7	093373	WARNING - General Safety Precautions
8	093457	WARNING - Keep Door Closed
9	093638	DANGER - Rotating Expeller (2 Places)

10	093639	DANGER - Manure Gas
11	093653	WARNING - Rotating Drive Line
12	094912	Colorbar (2 Places)
13	094913	GEHL (2 Places)
14	094951	Made in USA
15	115628*	Decal - All Model Numbers (2 Places)
16	120399	DANGER - Rotating Auger (3 Places)
17	120740	Scavenger Decal (2 Places)
18	141249	Decal - Patent
19	080247	No Step
20	145217	Amber Reflector Strip (5 Places)
21	122736	GEHL (2 Places)

*** 115628 Model Number Decal covers all Scavenger model numbers.**



1330TM - AUGER, LINER & SLIDES



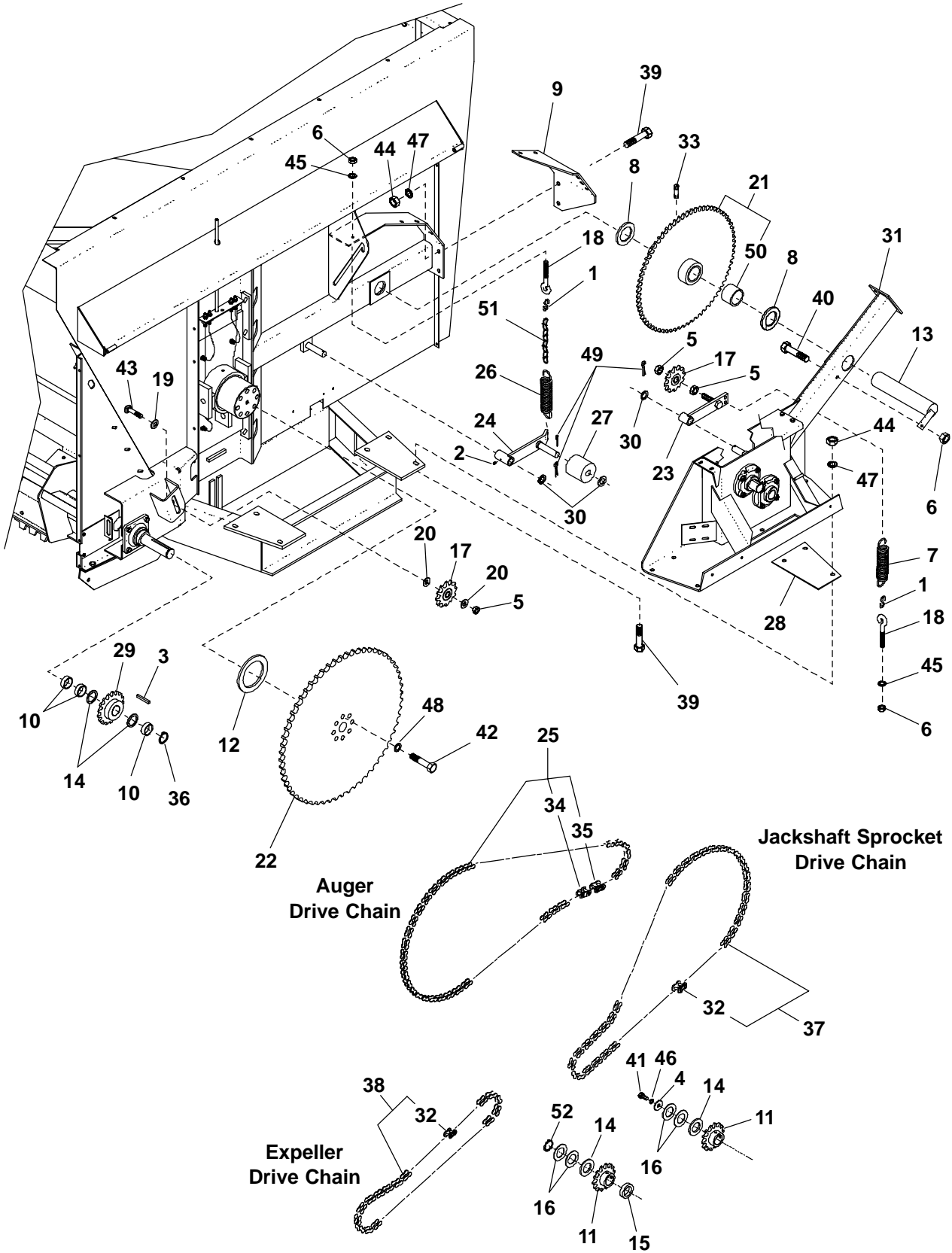
1330TM - AUGER, LINER & SLIDES

Ref. No.	Part No.	Description	Qty. Req.	Ref. No.	Part No.	Description	Qty. Req.
1	053894	FITTING/GREASE	5	19	120590 _a	AUGER/ASSY	1
2	142302	CONNECTOR	6	20	141782	RETAINER/LINER (7 SLOTS)	2
4	061848	NUT/BULKHEAD ADAPTER	5	21	606676	BUSHING/OILITE	2
5	070856	LFLN 3/8	14	22	650221	SHSS 1/2X1/2	2
6	075105	FITTING/GREASE	5	23	650490	CS 3/8X1	4
7	083228	LINER/REAR	1	24	650773	CB 3/8X1-1/2	16
8	083252	LINER/FRONT	1	25	651187	CS 3/4X1-3/4 GR8	2
9	083255	TRUNNION/ASSY	1	26	653010	HN 3/8	24
10	083256	BUSHING/BRONZE	1	27	654014	FW 3/4	2
11	088749	COLLAR/SET	1	28	654026	LW 3/8	24
12	094842	LINER/TANK	1	29	654034	LW 3/4	2
13	098088	BEARING/FIBER AUGER	1	30	655016	CP 3/16X1	2
14	120334	PLATE/ADJUSTMENT	8	32	142303 _b	KIT/GREASE LINE	5
15	120527	COVER/TANK REAR ASSY	1	33	142301	ELBOW/90 DEG	4
16	120531	SLIDE/AUGER ASSY FRONT	1				
17	120532	SLIDE/AUGER ASSY REAR	1				
18	120600	ROD/INDICATOR	1				

a) For Auger repair see Component Breakdowns page titled Auger.

b) Kit contains 3 ft Nylon Tubing, one 142301 Elbow and one 142302 Connector.

1330TM - AUGER & EXPELLER DRIVE



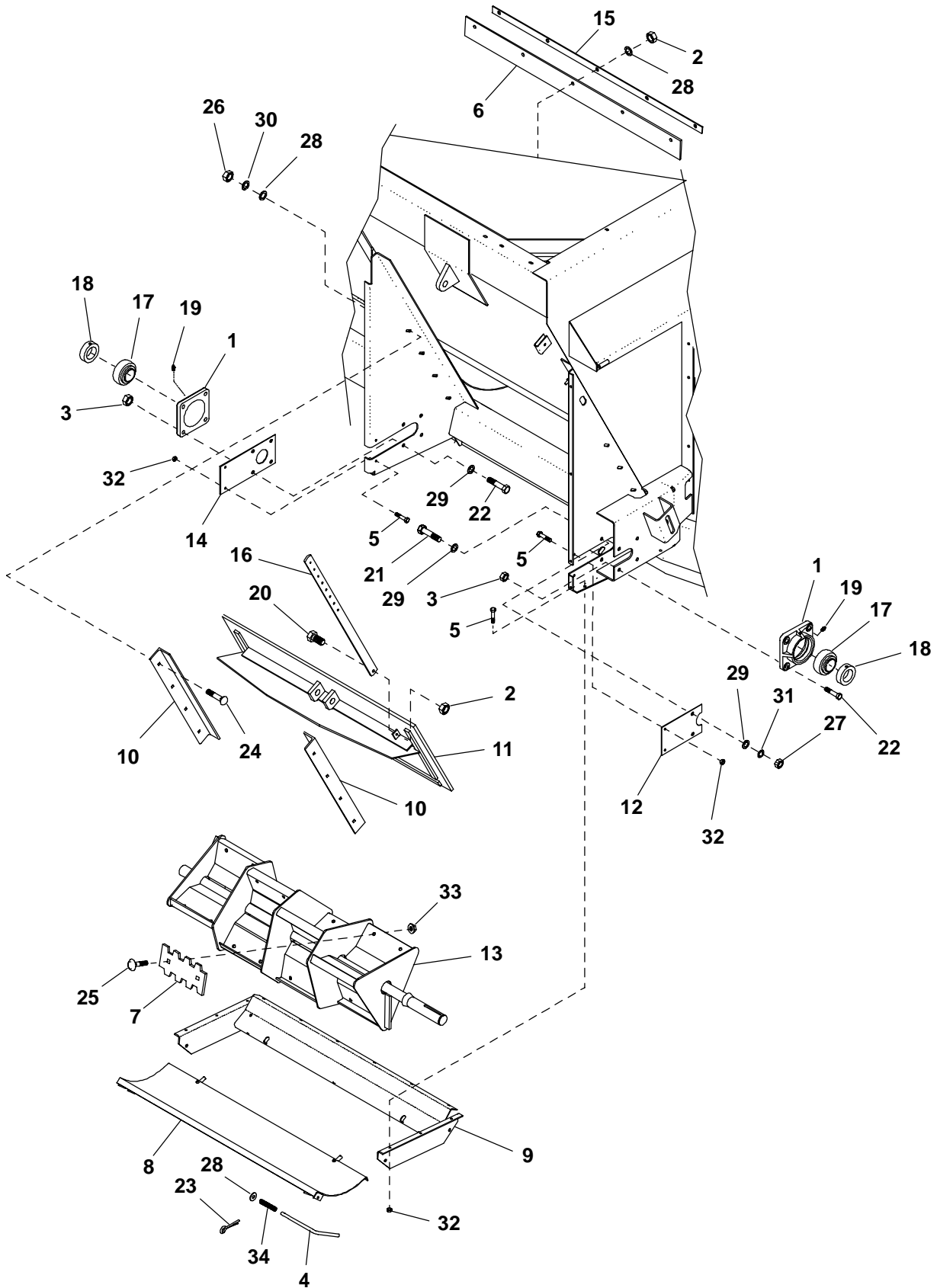
1330TM - AUGER & EXPELLER DRIVE

Ref. No.	Part No.	Description	Qty. Req.	Ref. No.	Part No.	Description	Qty. Req.
1	B11433A	HOOK-S	2	29	120615	SPROCKET/80B17	1
2	053894	FITTING/GREASE	1	30	128015	FW 1-1/32 SPECIAL	AR
3	006989	KEY/SQUARE 3/8	1	31	NS _b	GEARBOX/1000 RPM	1
4	057557	FW 17-32	1	32	500195	COUPLER/PLAIN (#80)	2
5	064331	LN 3/4	3	33	570000	FITTING/GREASE	1
6	071703	LN 3/8	3	34	601155	LINK/OFFSET (#140)	1
7	080646	SPRING/EXTENSION	1	35	601237	LINK/CONNECTOR (#140)	1
8	080834	FW 2-17/32	6	36	606465	RETAINING RING	1
9	080846	BRACE/JACKSHAFT	1	37	606662	CHAIN/ROLLER #80X98	1
10	081135	SPACER	3	38	606663	CHAIN/ROLLER #80X82	1
11	082022 _a	SPROCKET/DRIVE (#80X14T)	2	39	650307	CS 5/8 X 1-1/2	14
12	083254	SPACER	1	40	650492	CS 3/8 X 2-1/2	1
13	083259	JACKSHAFT/ASSY	1	41	650495	CS 1/2 X 1-1/4	1
14	083281	FW 1.760/1.775 SPECIAL	6	42	651090	CS 3/4 X 2 GR8	8
15	083283	SPACER	1	43	651292	CB 3/4 X 3	1
16	083289	FW 1.760/1.775 SPECIAL	AR	44	653021	HN 5/8	14
17	091918	SPROCKET/IDLER#80X12T	2	45	654006	FW 3/8	2
18	095026	BOLT/EYE	2	46	654030	LW 1/2	1
19	095027	FW .780 SQ ID	1	47	654032	LW 5/8	14
20	099242	BUSHING/MACH 3/4X1-1/4	7	48	654034	LW 3/4	8
21	120331	SPROCKET/JACKSHAFT ASSY (#80X70T, #140X11T)	1	49	655020	CP 3/16 X 1-1/2	3
22	120332	SPROCKET/ASSY 140B54	1	50	080605	BUSHING/BRONZE (REQUIRES BORE SIZING AFTER INSTALLATION)	2
23	120339	IDLER ARM ASSY	1	51	118036	CHAIN/ADJUSTMENT	1
24	120341	IDLER/ASSY	1	52	056640	RING/RETAINING	1
25	120344	CHAIN/ROLLER #140X77	1				
26	120347	SPRING/EXTENSION	1				
27	120539	ROLLER/IDLER	1				
28	120604	SHIM/TRANSMISSION	4				

a) See Operator's Manual Operation chapter for optional Sprockets and their function.

b) Not available as a complete assembly. For individual parts, see Component Breakdowns page titled Gearbox.

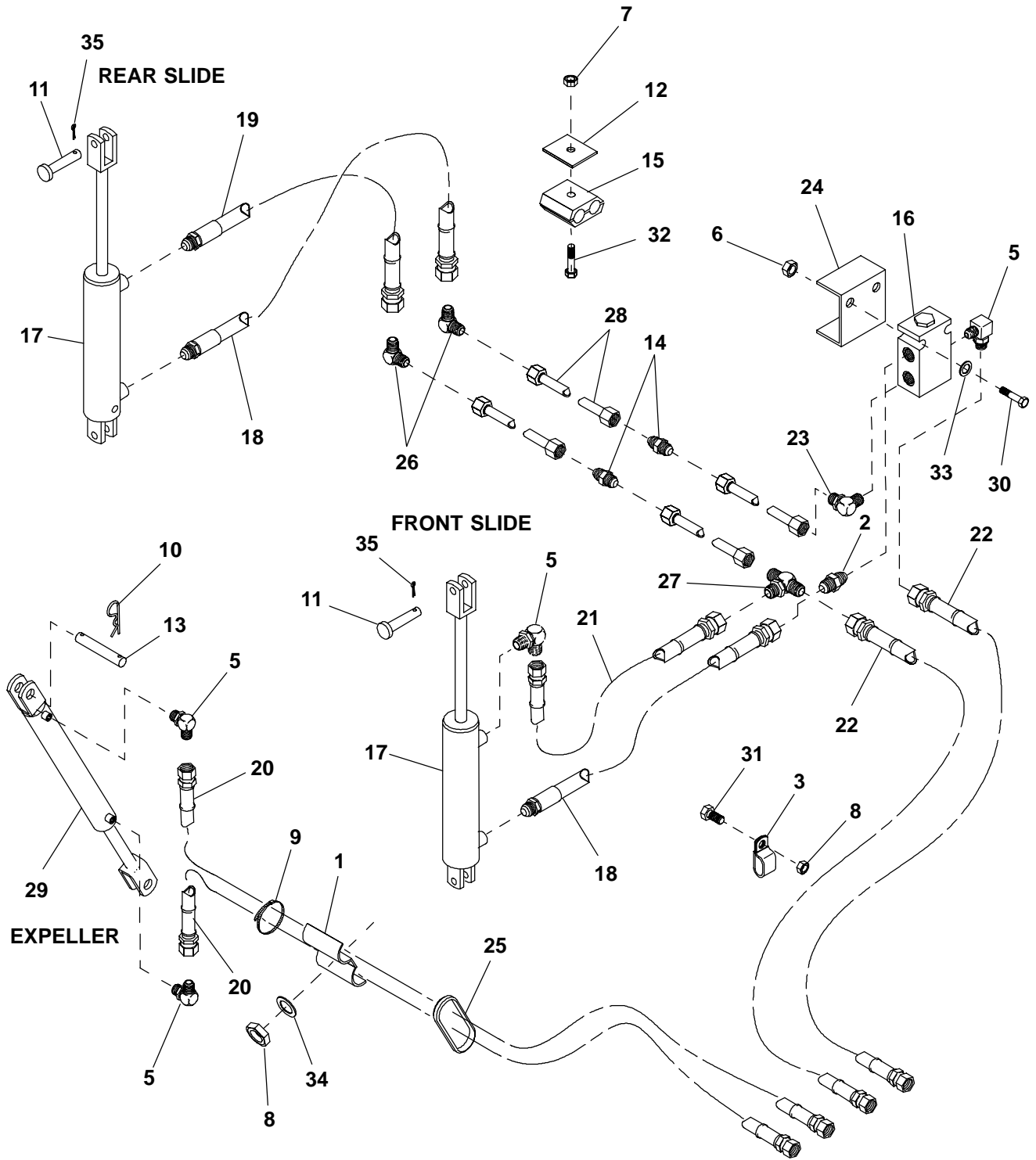
1330TM - EXPELLER & DISCHARGE GATE



1330TM - EXPELLER & DISCHARGE GATE

Ref. No.	Part No.	Description	Qty. Req.	Ref. No.	Part No.	Description	Qty. Req.
1	R13216	HOUSING/BEARING	2	18	520195	COLLAR/BEARING	2
2	071703	LN 3/8	6	19	570002	FITTING/GREASE	2
3	071706	LN 1/2	8	20	650490	CS 3/8 X 1	1
4	076373	PIN/RETAINER	2	21	650495	CS 1/2 X 1-1/4	2
5	081380	FLS 5/16 X 3/4	16	22	650569	CS 1/2 X 1-3/4	8
6	082010	WIPER/RUBBER	1	23	650553	CP 1/8 X 3/4	2
7	094474	TOOTH/EXPELLER	12	24	650786	CB 3/8 X 1-1/4	8
8	120240	PAN ASSY	1	25	651100	CB 1/2X1-1/4 GR8	24
9	120245	PANEL/ASSY	1	26	653010	HN 3/8	8
10	120249	ANGLE/GATE RETAINER	2	27	653018	HN 1/2	2
11	120544	GATE/ASSY	1	28	654006	FW 3/8	15
12	120587	COVER/SLOT ASSY DISCHARGE	1	29	654009	FW 1/2	8
13	120725	EXPELLER/ASSY 4 SECTION	1	30	654026	LW 3/8	8
14	120742	PLATE/COVER REAR	1	31	654030	LW 1/2	2
15	120751	STRIP/HOLDDOWN	1	32	210-19470	FLN 5/16	16
16	141247	BAR/INDICATOR	1	33	210-19530	FLN 1/2 (LARGE FLANGE)	24
17	520194	BEARING/BALL	2	34	380-13297	SPRING	2

1330TM - HYDRAULICS

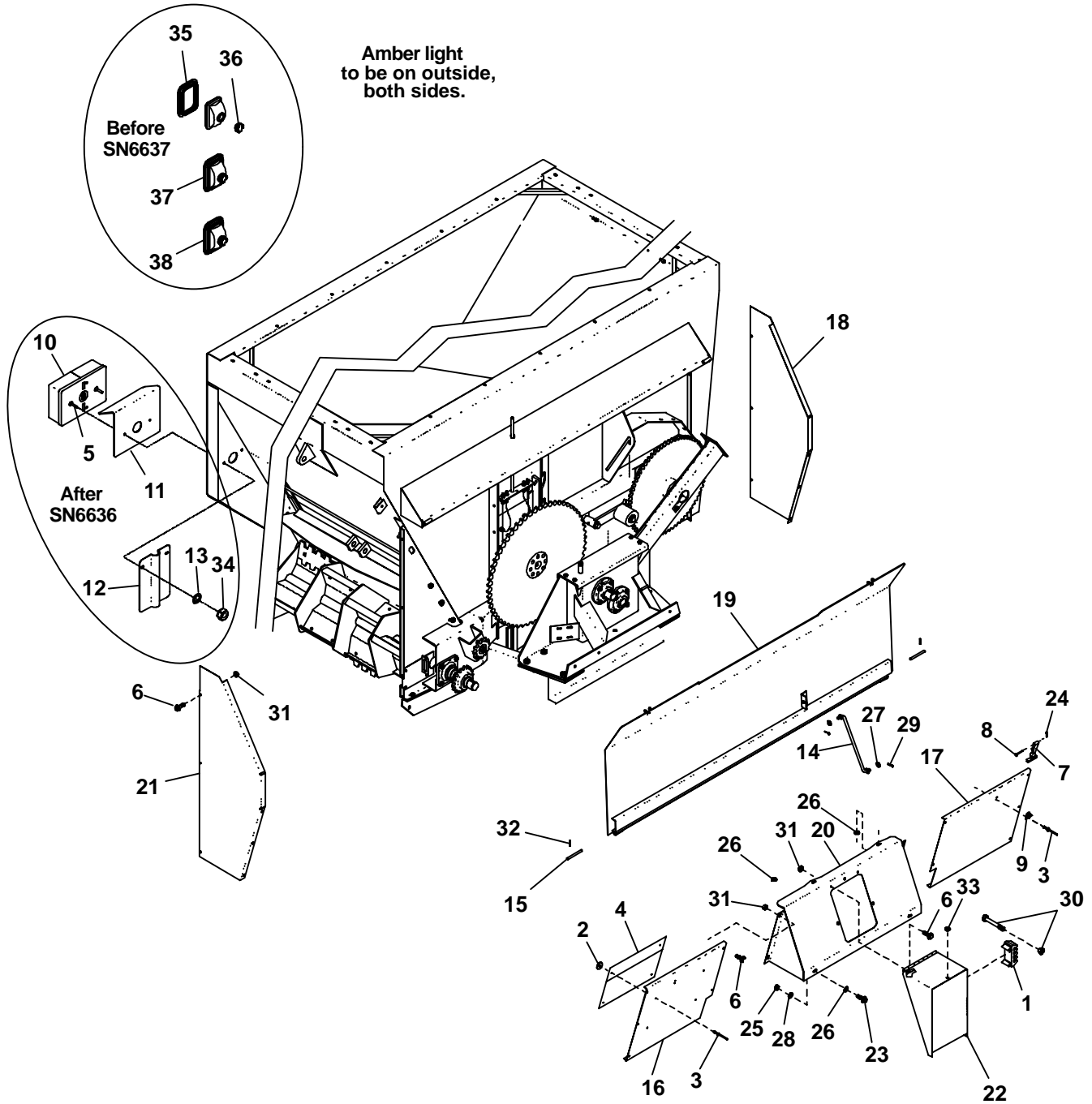


1330TM - HYDRAULICS

Ref. No.	Part No.	Description	Qty. Req.	Ref. No.	Part No.	Description	Qty. Req.
1	018453	CLAMP/HOSE	1	19	095151	HOSE/ASSY	1
2	054994	UNION/HYD FITTING	1	20	119355	HOSE/ASSY	2
3	055021	CLAMP/HOSE	6	21	120733	HOSE/ASSY	1
4	056080	QUICK-DISCONNECT (MALE)	4	22	603884	HOSE/ASSY	2
5	068938	ELBOW/HYD FITTING 90 DEG	4	23	114824	ELBOW/HYD FITTING 90 DEG	1
6	071700	LN 1/4	2	24	115607	CHANNEL/MOUNT	1
7	071701	LN 5/16	3	25	118757	GROMMET	1
8	071703	LN 3/8	3	26	119257	ELBOW/JIC	2
9	074091	TIE/NYLON	4	27	119258	TEE/JIC	1
10	076099	COTTER/HAIR PIN	4	28	119694	TUBE	4
11	076581	PIN/CLEVIS	4	29	120362 _a	CYLINDER/HYD 2 X 16	1
12	079098	PLATE/TWIN COVER	3	30	650019	CS 1/4 X 4	2
13	080629	PIN/GATE CYLINDER	2	31	650490	CS 3/8 X 1	1
14	087107	UNION/HYD FITTING	2	32	650692	CS 5/16X1-3/4	3
15	088904	CLAMP/TUBE	3	33	654002	FW 1/4	2
16	094164	VALVE/DIVIDER COMBINER	1	34	654006	FW 3/8	1
17	095145 _a	CYLINDER/HYDRAULIC 2 X 8	2	35	655022	CP 3/16X1-3/4	4
18	095150	HOSE/ASSY	2				

a) For individual parts see Component Breakdowns page titled Hydraulic Cylinders.

1330TM - GUARDS & SHIELDS



1330TM - GUARDS & SHIELDS

Ref. No.	Part No.	Description	Qty. Req.	Ref. No.	Part No.	Description	Qty. Req.
1	059272	HOLDER/SHEARBOLT	1	25	653010	HN 3/8	2
2	068642	FW 11/64	4	26	654006	FW 3/8	4
3	075274	RIVET/BLIND 3/16	8	27	654009	FW 1/2	2
4	078580	POUCH/MANUAL	1	28	654026	LW 3/8	2
5	650815	RHMS SLT #1024X3/4 (AFTER SN6636)	4	29	655016	CP 3/16 X 1	2
6	081380	CS FL LOCK 5/16	19	30	900084 _f	KIT/SHEARBOLT	4
7	091899	HOOK/RUBBER	2	31	210-19470	HN FL S-LOCK 5/16	19
8	092665	PIN/CLEVIS	2	32	220-10238	PIN	2
9	111421	CLEVIS/BRACKET	2	33	420-19509	STOP/RUBBER	3
10	157123 _a	LIGHT (AFTER SN6636)	2	34	651456	HLN INST M5 (AFTER SN6636)	4
11	157711	SHIELD/LIGHT (AFTER SN6636)	2	35	119532	BEZEL/WARNING LIGHT	4
12	170938	COVER (AFTER SN6636)	2			(BEFORE SN6637)	
13	650584	FW #10 (AFTER SN6636)	4	36	119533	SOCKET/WARNING LIGHT	4
14	120291	PROP ROD ASSY	1			(BEFORE SN6637)	
15	141811	PIN/HINGE	2	37	119665	LIGHT/AMBER	2
16	142097	PANEL/RT	1			(BEFORE SN6637)	
17	142098	PANEL/LT	1	38	119666	LIGHT/RED	2
18	142102	SHIELD/LT	1			(BEFORE SN6637)	
19	142368 _b	COVER/FRONT ASSY	1				
20	142371 _c	SHIELD/FRONT ASSY	1				
21	142373 _e	SHIELD/RT	1				
22	143366 _d	SHIELD/ASSY PTO	1				
23	650490	CS 3/8 X 1	2				
24	650590	CP 1/16 X 1/2	2				

a) Replacement bulbs (Amber 1156 12V, Red 1157 12V). Obtain locally.

b) Includes 093653 & 120399 Decals.

c) Includes 093367 & 093373 Decals.

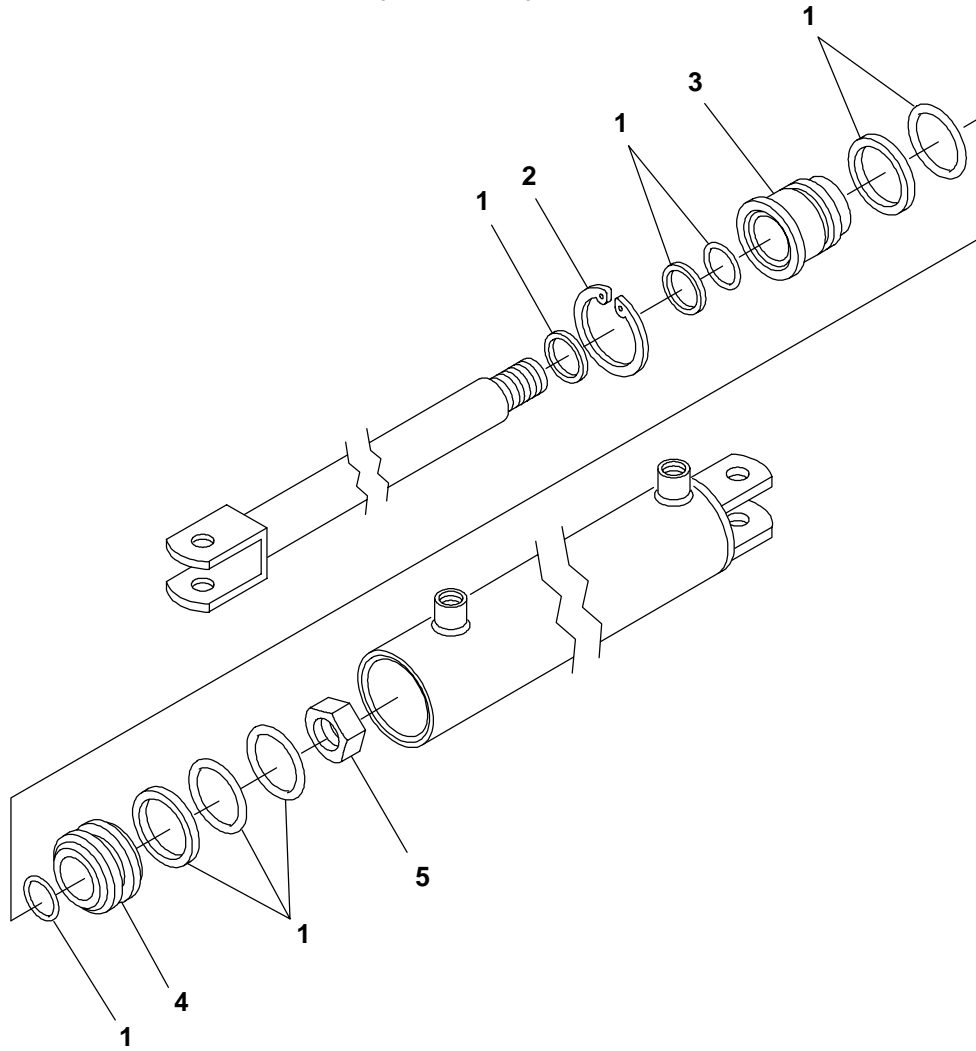
d) Includes 080247 Decal.

e) Includes 093638 Decal.

f) Shear Bolt Kit 900084 contains 8 Shear Bolts and 8 Lock Nuts.

1330TM - COMPONENT BREAKDOWNS

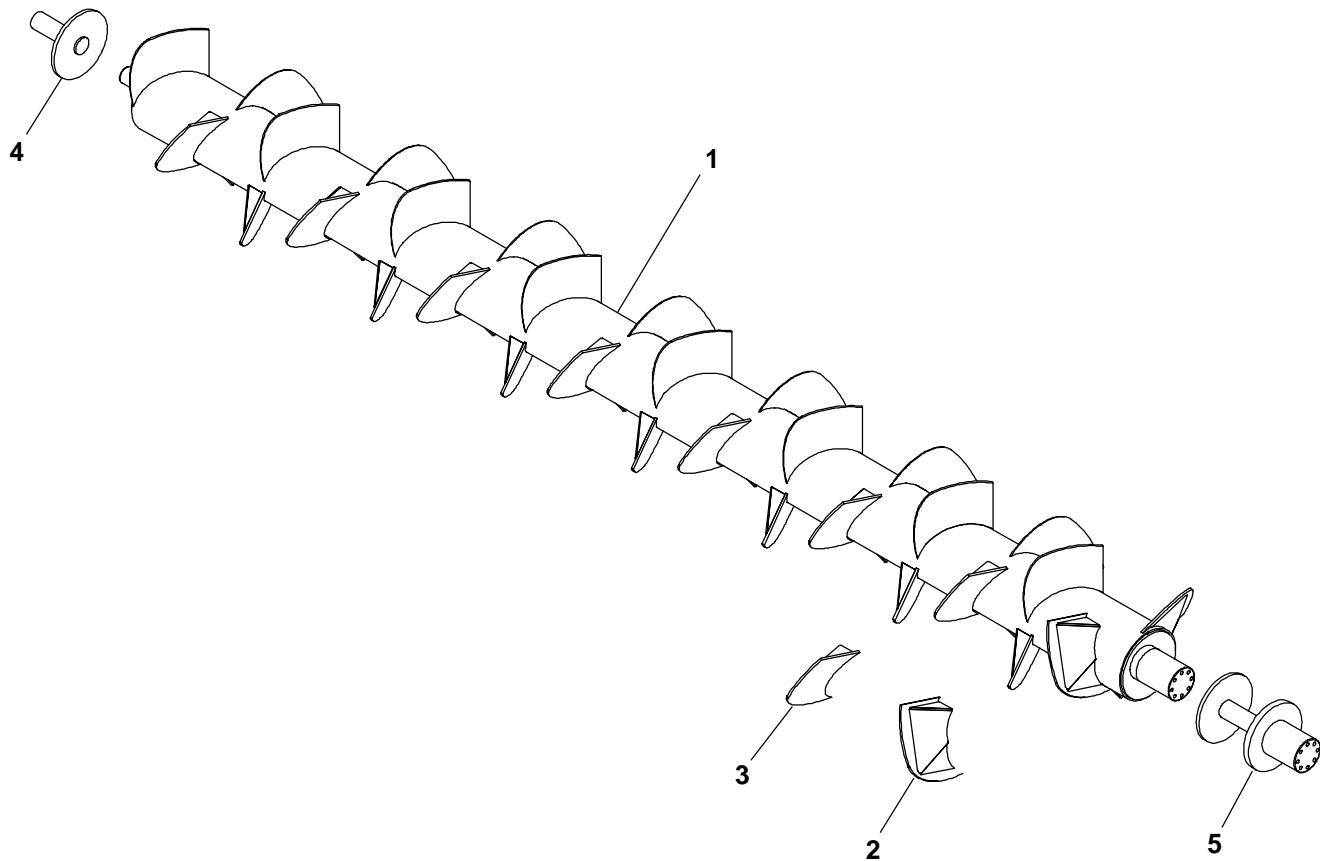
Hydraulic Cylinders



Ref. No.	Part No.	Description	Quantity		
			095145	095146	120362
1	089693	KIT/SEAL	1	1	-
	129829	KIT/SEAL	-	-	1
2	089689	RING/SNAP	1	1	1
3	128372	HEAD/HYD CYL	1	1	-
	129831	HEAD/HYD CYL	-	-	1
4	089690	PISTON/HYD CYL	1	1	-
	129834	PISTON/HYD CYL	-	-	1
5	073788	NUT/LOCK	1	1	1

1330TM - COMPONENT BREAKDOWNS

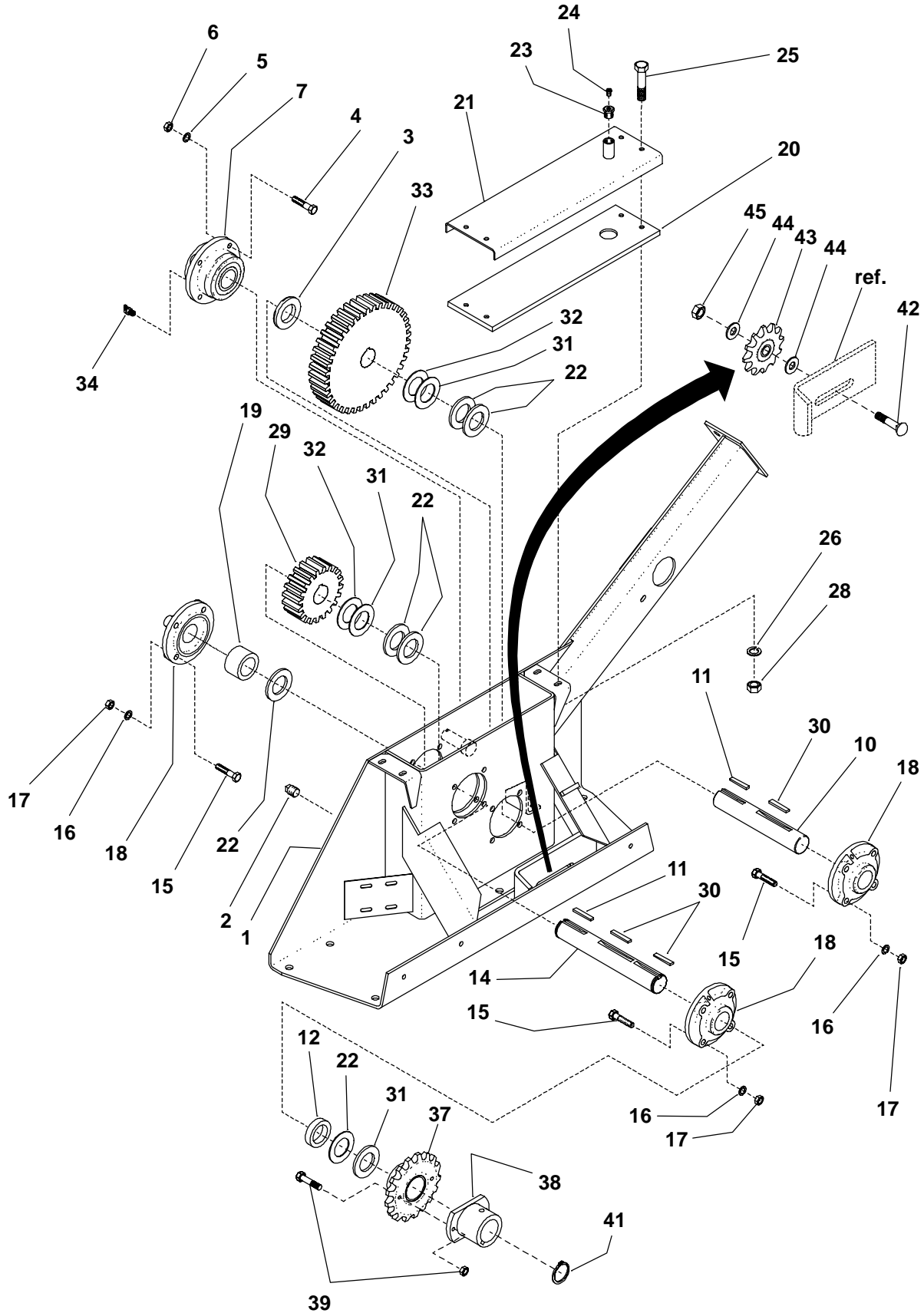
Auger



Ref. No.	Part No.	Description	Qty. Req.	Ref. No.	Part No.	Description	Qty. Req.
1	120590	AUGER/ASSY	1	4	120593	SHAFT/ASSY IDLE (WELD IN)	1
2	141269	PADDLE/FRONT REPAIR (WELD IN) ...	2	5	120594	SHAFT/ASSY DRIVE (WELD IN)	1
3	141270	PADDLE/REAR REPAIR (WELD IN) ...	32				

1330TM - COMPONENT BREAKDOWNS

Gearbox

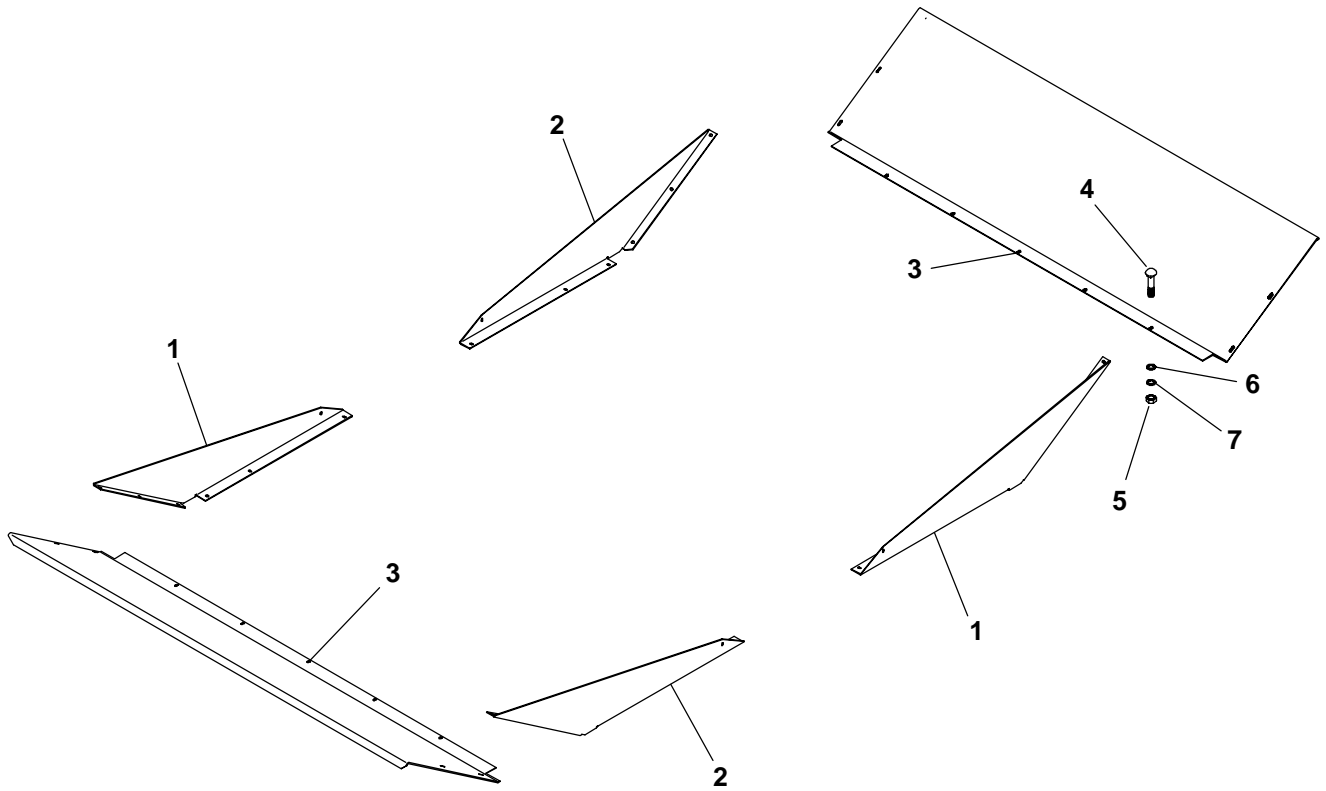


1330TM - COMPONENT BREAKDOWNS

Ref. No.	Part No.	Description	Qty. Req.	Ref. No.	Part No.	Description	Qty. Req.
1	143353	GEARBOX ASSY	1	24	045668	FITTING/RELIEF	1
2	660004	PLUG/PIPE 1/2 SQ HD	1	25	650491	CS 3/8 X 1-1/4	4
3	083284	SPACER	1	26	654006	FW 3/8	4
4	651113	CS 7/16 X 1-3/4	4	28	067847	NILN 3/8	4
5	654028	LW 7/16	4	29	606673	GEAR/1-3/4 SPUR	1
6	653015	HN 7/16	4	30	056230	KEY/SQUARE	3
7	606678	BEARING/ROLLER	1	31	083289	FW 1.760/1.775 SPECIAL	AR
10	083288	SHAFT	1	32	042858	FW 1-25/32 SPECIAL	AR
11	059566	KEY	2	33	606672	GEAR/1-3/4 SPUR	1
12	083283	SPACER	1	34	570005	FITTING/GREASE	1
14	098214	SHAFT	1	37	113034	SPROCKET/ASSY 17T	1
15	650569	CS 1/2 X 1-3/4	12	38	083669	FLANGE/SHEAR ASSY	1
16	654030	LW 1/2	12	39	900084 _a	KIT/SHEARBOLT (GRADE 5)	1
17	653018	FW 1/2	12	41	056640	RING/RETAINING	2
18	606541	BEARING/FLANGE	3	42	651292	CB 3/4 X 3	1
19	083282	SPACER	1	43	091918	SPROCKET/IDLER #80X12T	1
20	080845	GASKET/GEARBOX/COVER	1	44	099242	BUSHING/MACH 3/4 X 1-1/4	8
21	083285	TOP/TRANSMISSION	1	45	064331	LN 3/4	1
22	083281	FW 1.760/1.775 SPECIAL	AR				
23	660044	BUSHING/HEX RED 1/2 X 1/8	1				

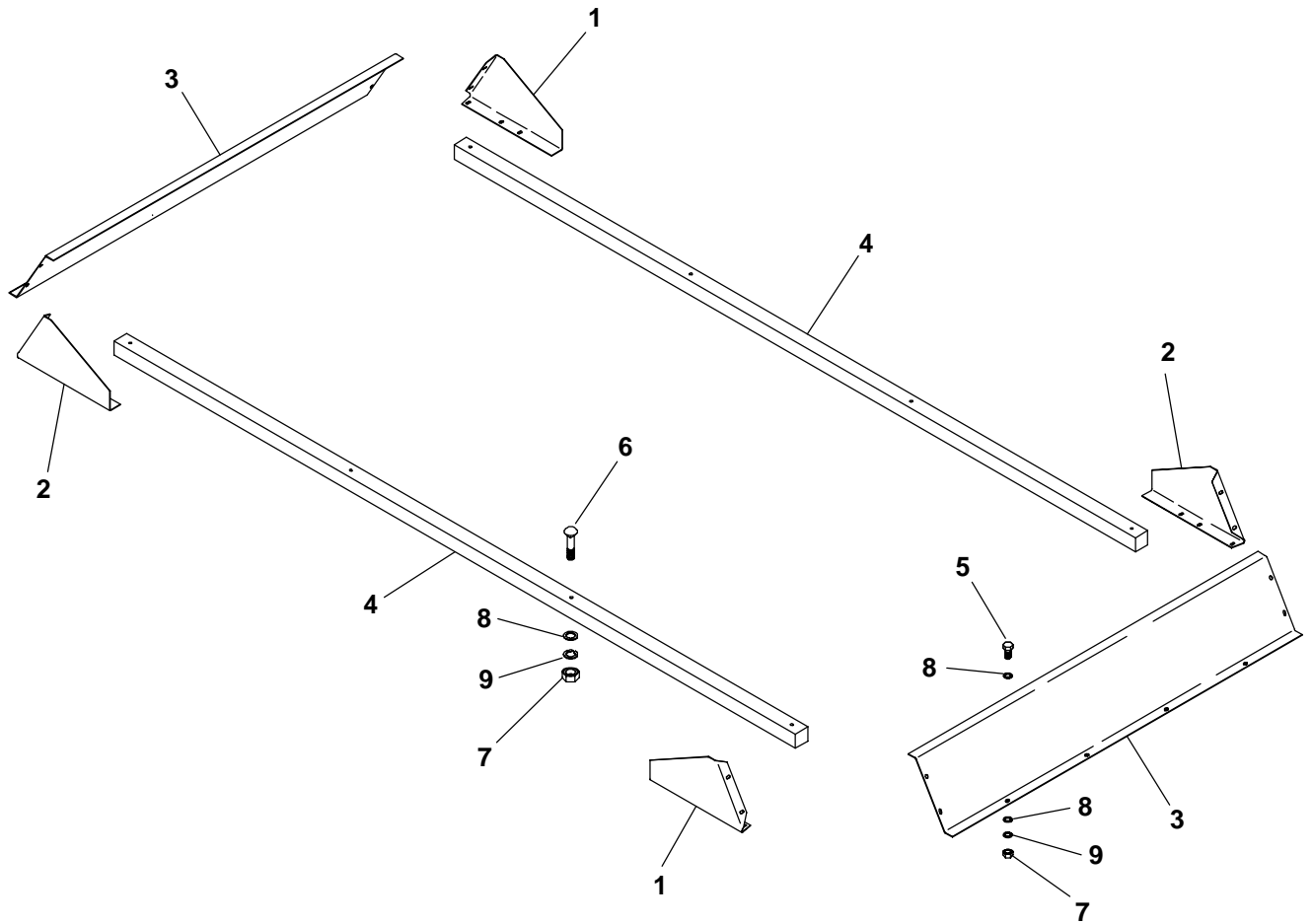
a) Shearbolt Kit 900084 contains 8 Shear Bolts and 8 Lock Nuts.

Solids Spill Guards



Ref. No.	Part No.	Description	Qty. Req.	Ref. No.	Part No.	Description	Qty. Req.
1	141258	SHIELD/FRONT R.H.	2	5	653010	HN 3/8	34
2	141259	SHIELD/L.H.	2	6	654006	FW 3/8	34
3	141257	SHIELD/FRONT/REAR	2	7	654026	LW 3/8	34
4	650704	CB 3/8X1	34				

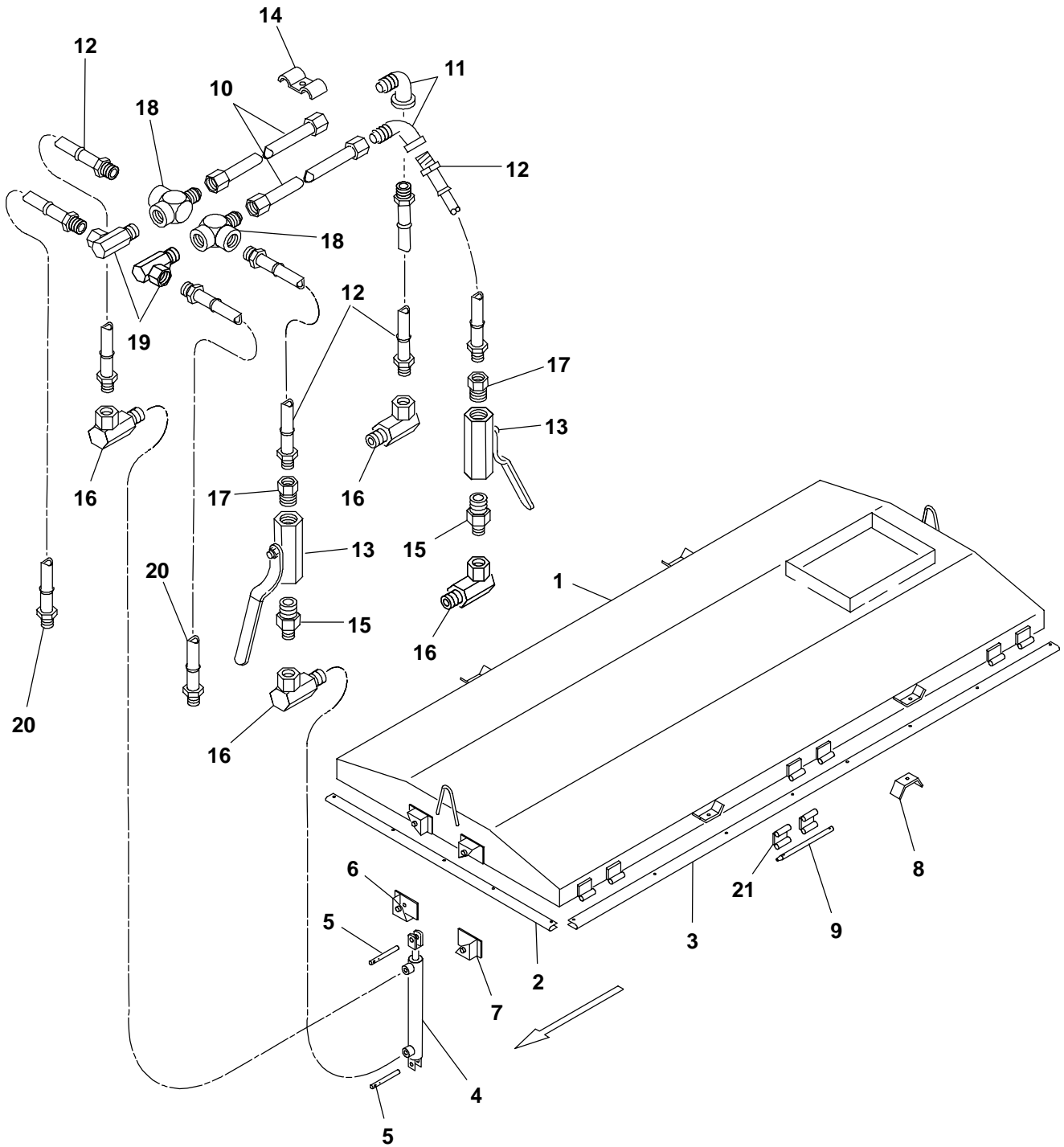
Splash Guards & Rails



Ref. No.	Part No.	Description	Qty. Req.	Ref. No.	Part No.	Description	Qty. Req.
1	099979	SHIELD/RIGHT	2	6	650540	CB 3/8X3-1/2	8
2	099980	SHIELD/LEFT	2	7	653010	HN 3/8	32
3	111347	SHIELD	2	8	654006	FW 3/8	56
4	112137	RAIL/WOOD	2	9	654026	LW 3/8	32
5	650490	CS 3/8X1	24				

1330TM - OPTIONS & ACCESSORIES

Hydraulic Lid Kit 804683 - MS1330TM



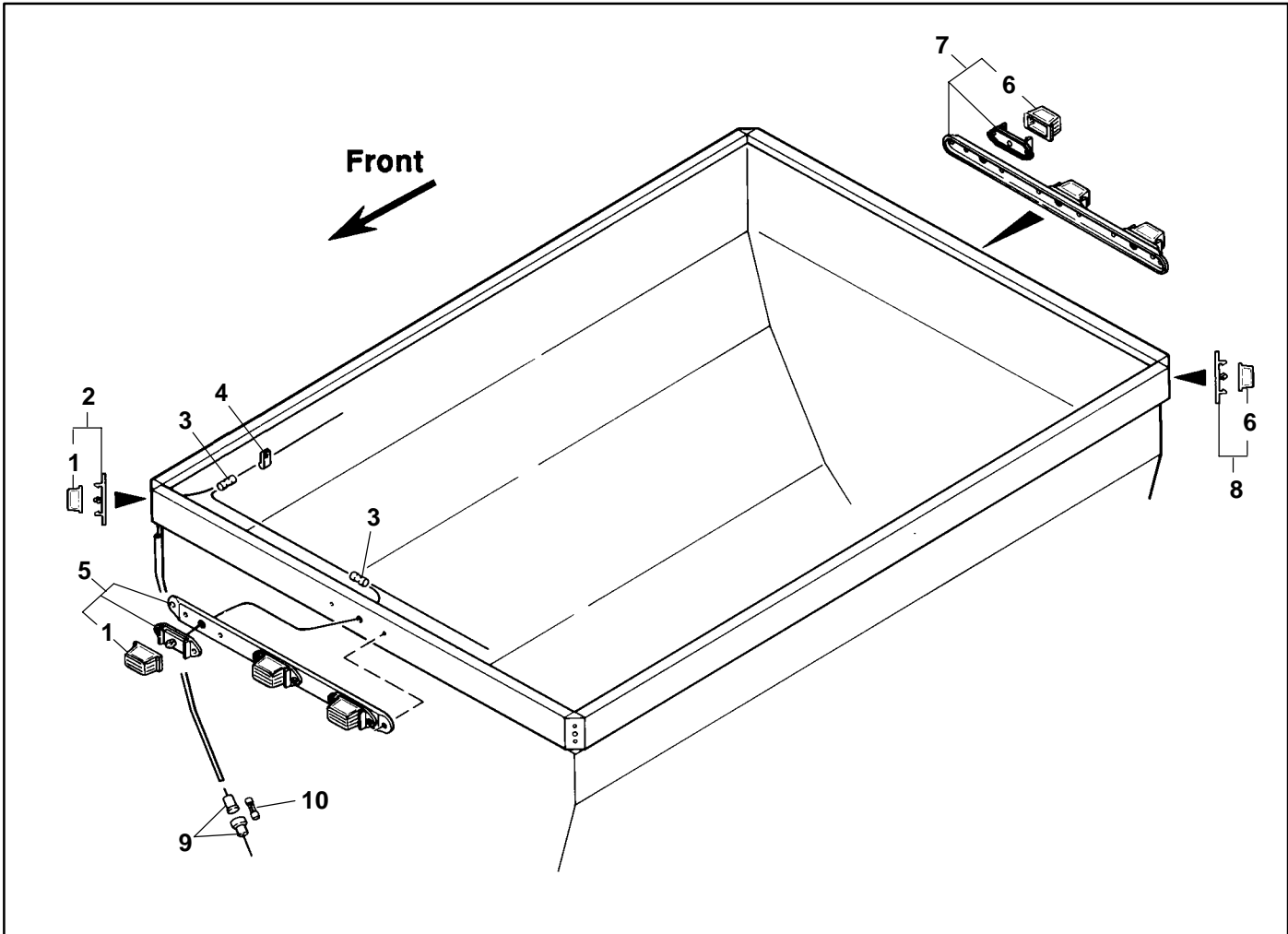
1330TM - OPTIONS & ACCESSORIES

Ref. No.	Part No.	Description	Qty. Req.	Ref. No.	Part No.	Description	Qty. Req.
1	092816 _a	LID/TANK ASSY	1	10	092805	TUBE/HYDRAULIC	2
2	092824	SEAL/LID END	2	11	064673	ELBOW/HYD FITTING 90 DEG	2
	651069	BOLT/ELEVATOR 5/16X1-1/4 (HN, LW)	16	12	083231	HOSE/ASSY	4
3	092809	SEAL/LID SIDE	2	13	092813	VALVE	2
	651069	BOLT/ELEVATOR 5/16X1-1/4 (HN, LW)	32	14	018453	CLAMP/HOSE	3
4	095146 _b	CYLINDER/HYDRAULIC 2 X 18	2		070856	3/8 FLN	3
5	092812	PIN/CYLINDER PIVOT	4	15	072901	NIPPLE/MALE 3/8 TO 1/2	2
	074090	PIN/SPRING	4	16	077969	ELBOW/HYD FITTING 90 DEG	4
6	092593	BRACKET/CYL PIVOT LT	2	17	057655	BUSHING/HYD FITTING	2
7	092804	BRACKET/CYL PIVOT RT	2	18	092806	FITTING/HYDRAULIC	2
8	092803	BRACKET/HOLD DOWN	4	19	580052	ELBOW/HYD FITTING 90 DEG	2
	650526	CS 3/4X6 (NILN)	4	20	083250	HOSE/ASSY	2
9	092810	PIN/HINGE (7/8X18-7/8)	6	21	092814	HINGE/LID ASSY LOWER	12
	655020	PIN/COTTER 3/16X1-1/2	12				
	092811	PIN/DRIVE (1/2X19-1/2)	1				
	655020	PIN/COTTER 3/16X1-1/2	2				

a) Includes 093202, 092807 & 093793 Decals.

b) For repair parts, see Component Breakdowns page titled Hydraulic Cylinders.

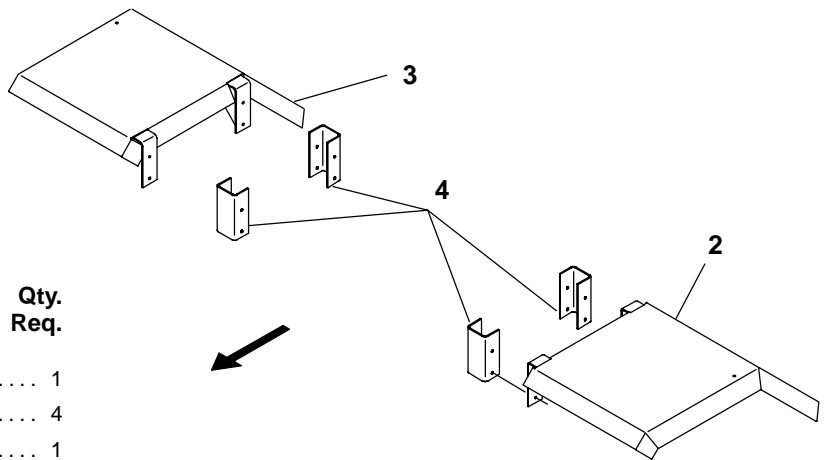
1330TM - OPTIONS & ACCESSORIES



Ref. No.	Part No.	Description	Qty. Req.	Ref. No.	Part No.	Description	Qty. Req.
	804578 _a	LIGHT KIT	1	6	110422	LENS/RED MINI-LITE	5
		CONSISTS OF:		7	110413	IDENTIFICATION BAR - RED	1
1	110423	LENS/AMBER MINI-LITE	5		650702	TFS #6-32X3/8	2
2	110415	MINI LITE - AMBER	2	8	110414	LITE/MINI RED	2
	650702	TFS #6-32X3/8	4		650702	TFS #6-32X3/8	4
3	071105	CONNECTOR/BUTT	AR	9	110219	HOLDER/INLINE FUSE	1
4	110416	CLIP	AR	10	076056	FUSE 10AMP	1
5	110412	IDENTIFICATION - AMBER	1				
	650702	TFS #6-32X3/8	2				

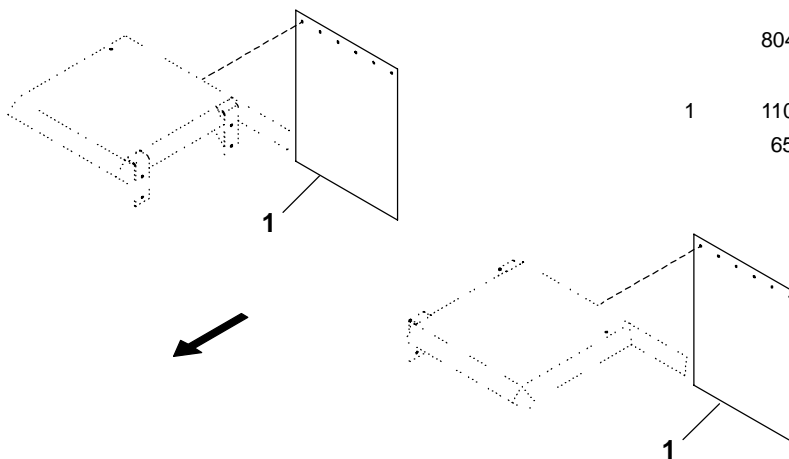
a)100 feet of 16 AWG Wire is included with field-installation Kit.

Truck-Mounted Fenders



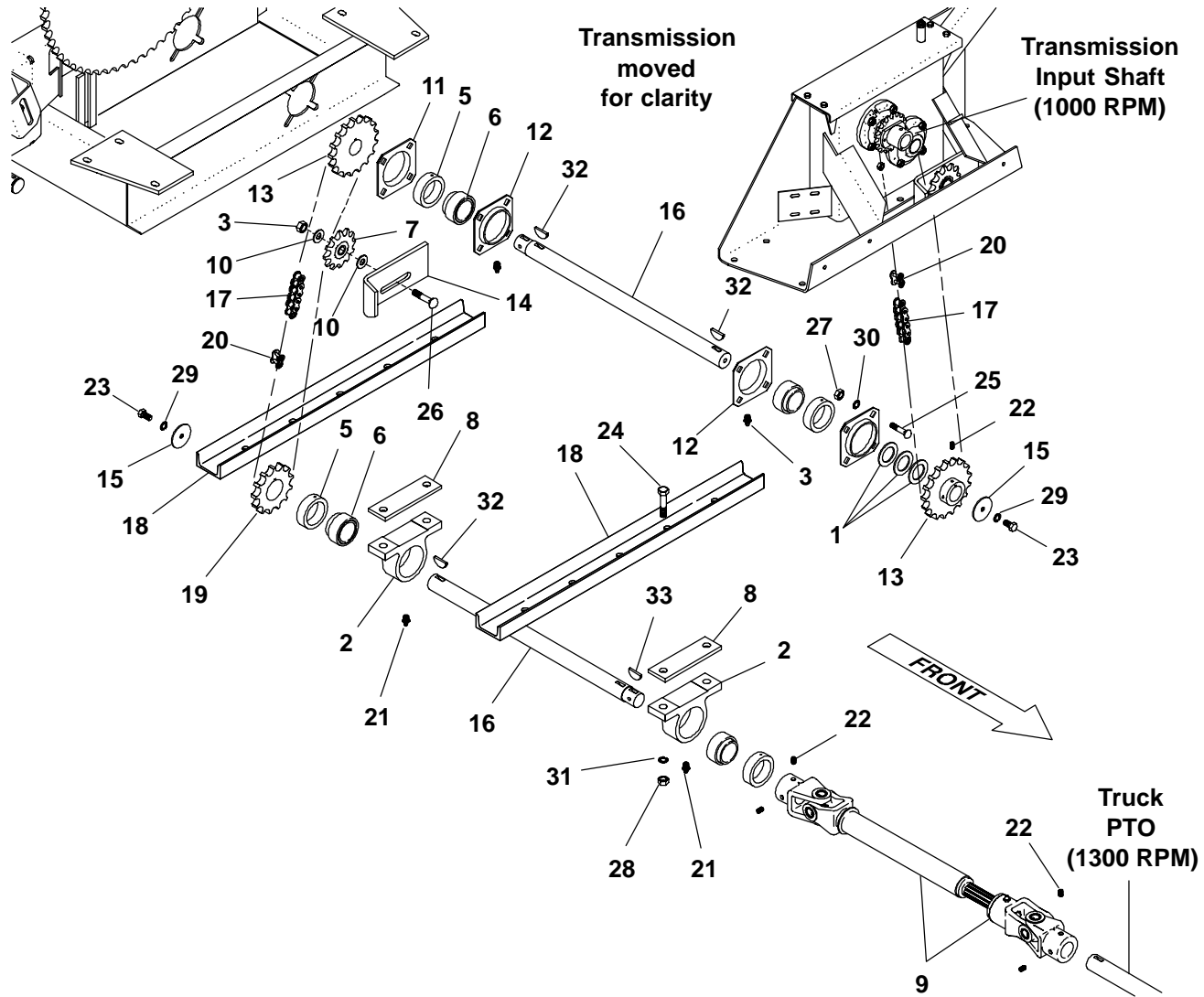
Ref. No.	Part No.	Description	Qty. Req.
2	110417	FENDER/LEFT ASSY	1
	650490	CS 3/8X1 (HN, LW)	4
3	110418	FENDER/RIGHT ASSY.	1
	650490	CS 3/8X1 (HN, LW)	4
4	110420	MOUNT/FENDER	4
	650533	CS 3/8X1-1/2 (HN, LW)	8

Accessory Truck-Mounted Mud Flaps



Ref. No.	Part No.	Description	Qty. Req.
	804580	MUD FLAPS	1
		CONSISTS OF:	
1	110421	FLAP/MUD 24 X 36	2
	650533	CS 3/8X1-1/2 (HN, LW, FW)	12

1330TM - OPTIONS & ACCESSORIES

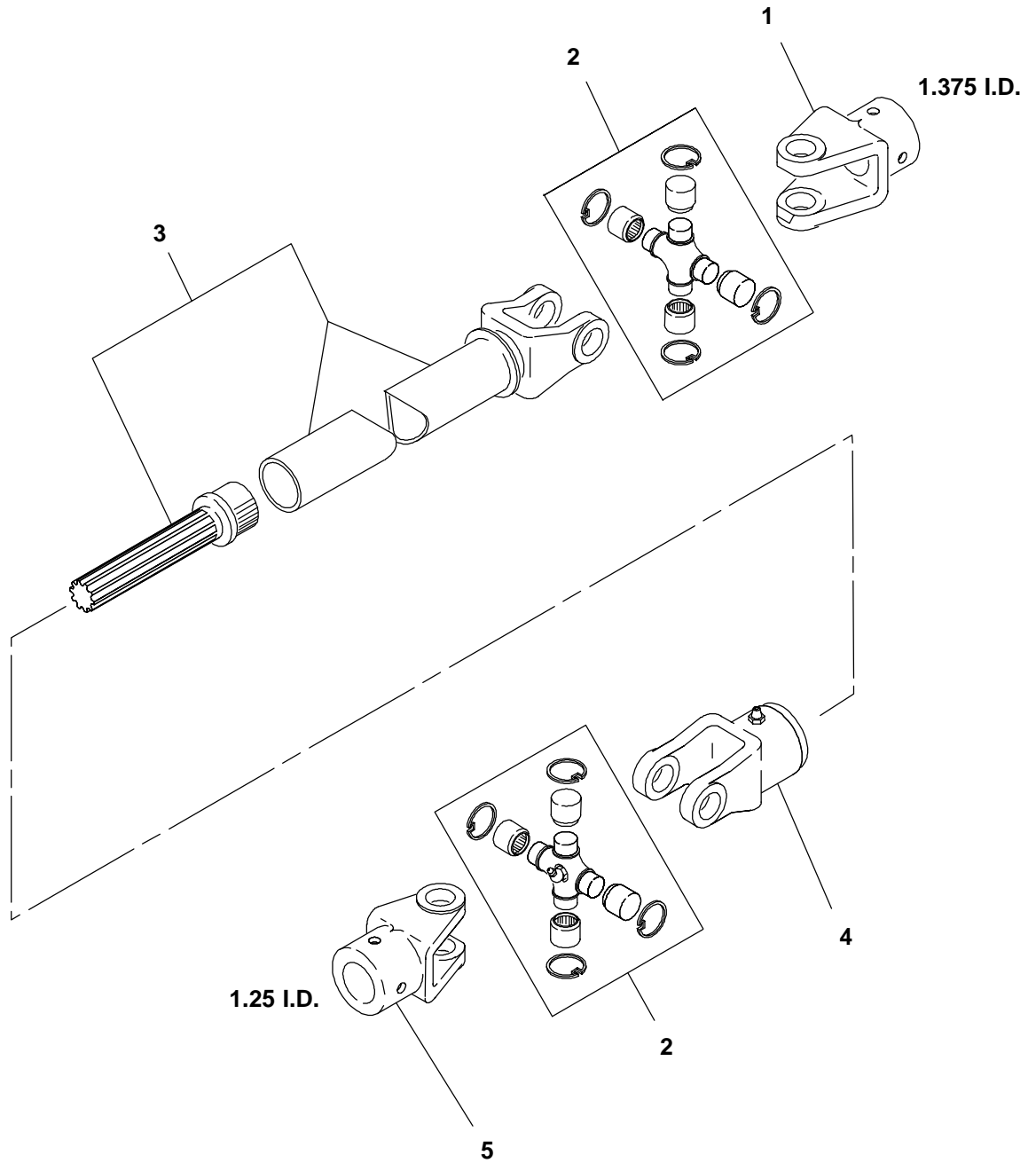


Ref. No.	Part No.	Description	Qty. Req.
	807121	KIT/MECHANICAL DRIVE 1:1	1
		CONSISTS OF:	
1	H7119	FW 1-33/64	6
2	M12215	HOUSING/BEARING	2
3	053894	FITTING/GREASE	2
4	064331	LN 3/4	1
5	076082	COLLAR/BEARING	4
6	083666	BEARING/BALL	4
7	091918	SPROCKET/IDLER #80X12T	1
8	097530	SPACER	2
9	NS _a	JOINT/UNIVERSAL ASSEMBLED	1
10	099242	BUSHING/MACH 3/4 X 1-1/4	6
11	110022	FLANGETTE/RELUBE 80MM	2
12	110023	FLANGETTE/RELUBE 80MM	2
13	120562	SPROCKET/80B17	2
14	120747	MOUNT/IDLER	1
15	122892	FW 13/32 (SPECIAL)	2
16	143911	SHAFT/DRIVE	2

Ref. No.	Part No.	Description	Qty. Req.
17	143916	CHAIN/ROLLER #80X52	2
18	143930	CHANNEL	2
19	143993	SPROCKET/80B13	1
20	500195	COUPLER/PLAIN #80	2
21	570002	FITTING/GREASE	2
22	650212	SHSS 3/8 X 3/8	8
23	650490	CS 3/8 X 1	2
24	650647	CS 5/8 X 2	4
25	650834	CB 1/2 X 1-1/2	8
26	651292	CB 3/4 X 3	1
27	653018	HN 1/2	8
28	653021	HN 5/8	4
29	654026	LW 3/8	2
30	654030	LW 1/2	8
31	654032	LW 5/8	4
32	655536	KEY/WOODRUFF 3/8 X 1-1/4	3
33	655537	KEY/WOODRUFF 5/16 X 1-1/4	1

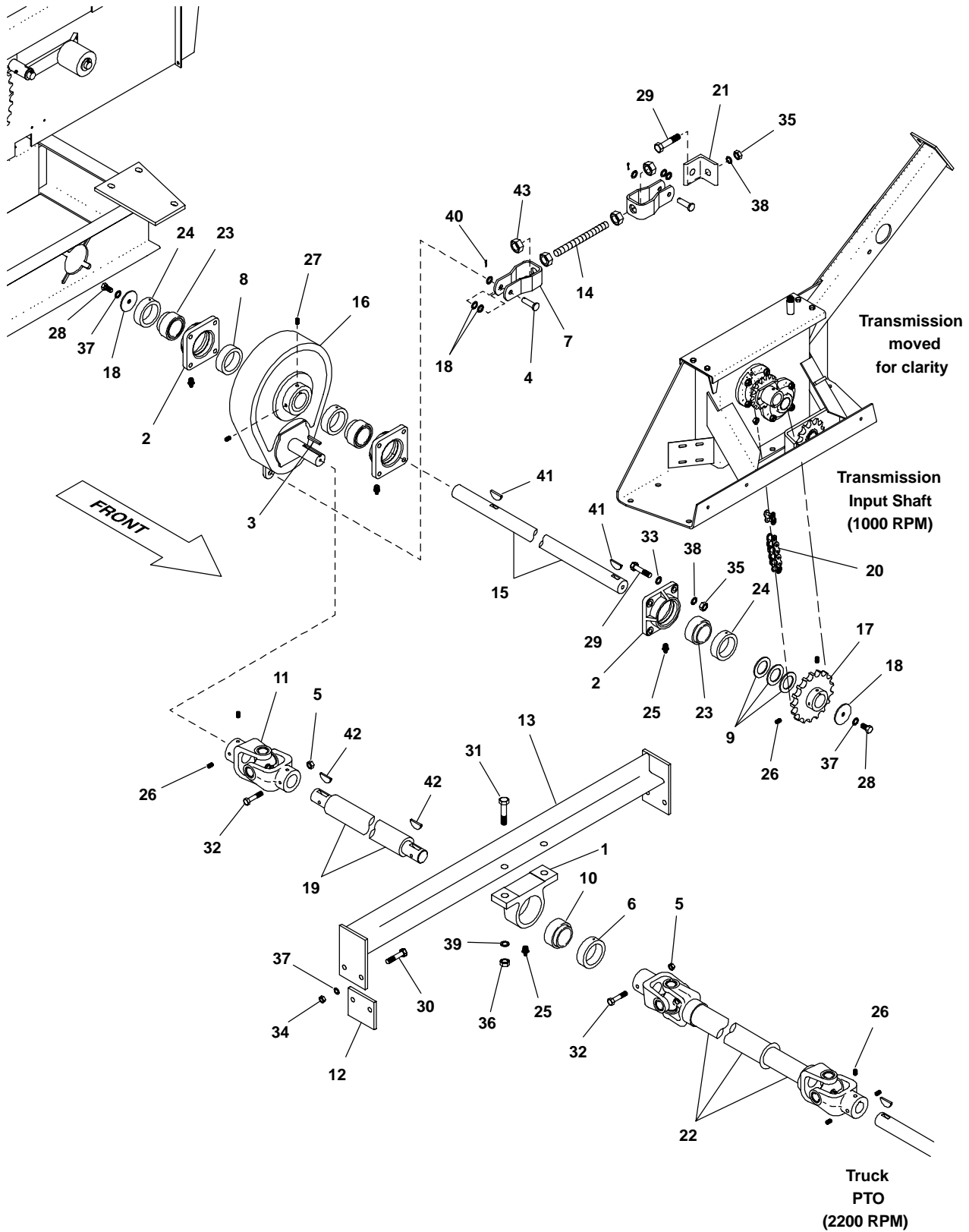
a) NOT serviced as an assembly. See parts breakdown on the following page.

806885 & 807121 Mechanical Drive Kit
PTO Replacement Components



Ref. No.	Part No.	Description	Qty. Req.	Ref. No.	Part No.	Description	Qty. Req.
1	144803	YOKE	1	3	144733	YOKE/TUBE & STUB PLUG	1
2	510114	KIT/CENTER CROSS	2	4	115777	YOKE	1
	570004	FITTING/GREASE	2	5	115776	YOKE	1

2:1 Mechanical Drive Kit



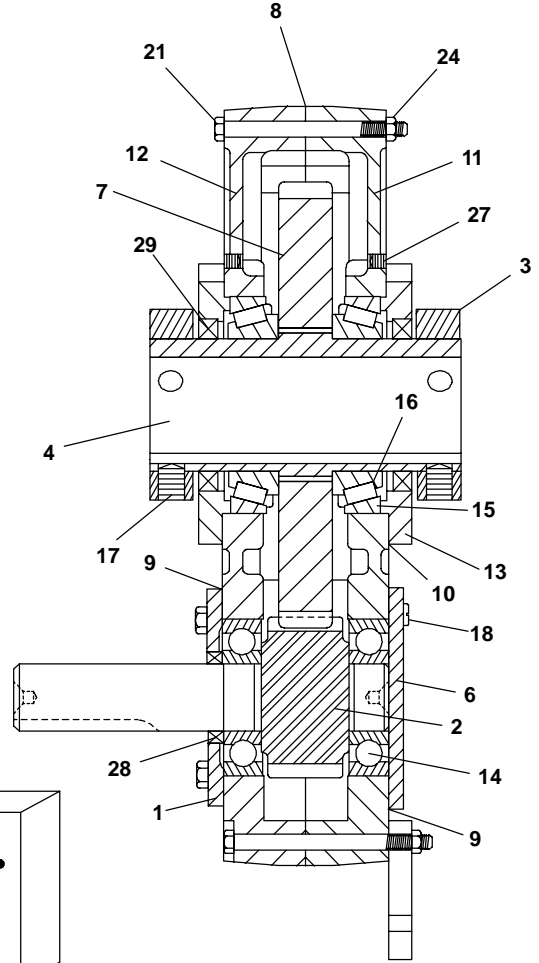
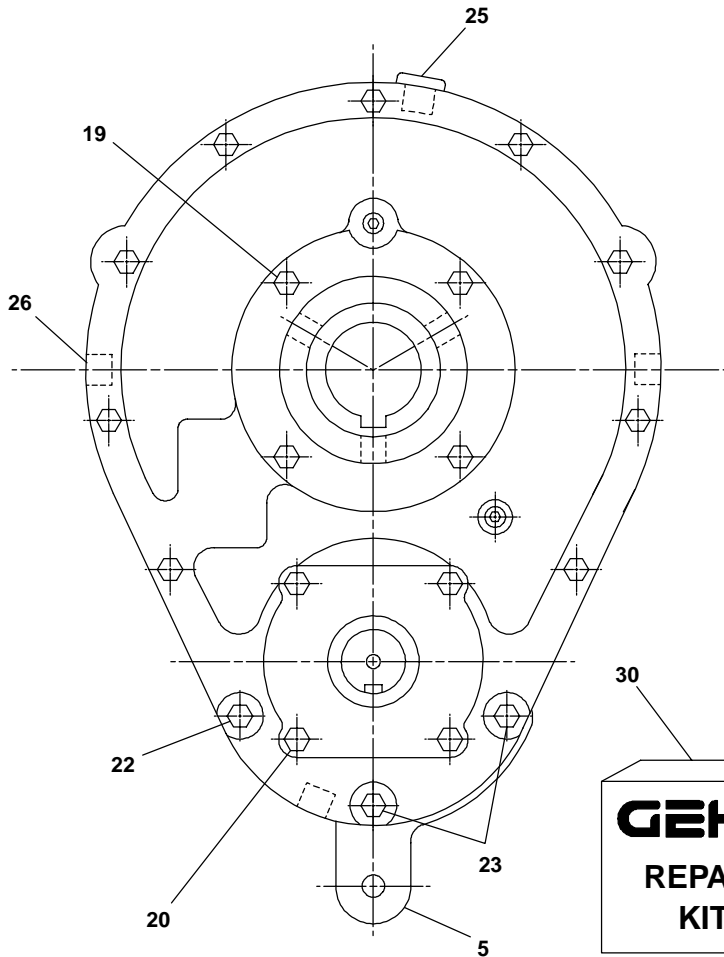
1330TM - OPTIONS & ACCESSORIES

Ref. No.	Part No.	Description	Qty. Req.	Ref. No.	Part No.	Description	Qty. Req.
	806885	KIT/MECHANICAL DRIVE 2:1	1	22	NS _a	SHAFT UNIVERSAL	1
		CONSISTS OF:		23	520194	BEARING/BALL	3
1	M12215	HOUSING/BEARING	1	24	520195	COLLAR/BEARING	3
2	R13216	HOUSING/BEARING	3	25	570002	FITTING/GREASE	4
3	009477	KEY/SQUARE	1	26	650212	SHSS 3/8 X 3/8	7
4	045660	PIN/CLEVIS	2	27	650224	SHSS 1/2 X 3/4	4
5	071701	LN 5/16	2	28	650490	CS 3/8 X 1	2
6	076082	COLLAR/BEARING	1	29	650569	CS 1/2 X 1-3/4	13
7	117255	CLEVIS	2	30	650579	CS 3/8 X 1-3/4	4
8	081135	SPACER/PTO	1	31	650647	CS 5/8 X 2	2
9	083281	FW 1.76/1.775 SPECIAL	5	32	650733	CS 5/16 X 2-1/2	2
10	083666	BEARING/BALL	1	33	651148	FW 1/2	18
11	092674	UNIVERSAL JOINT	1	34	653010	HN 3/8	4
12	110768	SPACER PLATE	2	35	653018	HN 1/2	13
13	110781	MOUNT BRACKET	1	36	653021	HN 5/8	2
14	093872	ROD	1	37	654026	LW 3/8	6
15	120242	SHAFT/INPUT	1	38	654030	LW 1/2	13
16	120579	TRANSMISSION/2:1	1	39	654032	LW 5/8	2
17	120615	SPROCKET/80B17	1	40	655008	CP 1/8 X 1-1/4	2
18	122892	FW 13/32 SPECIAL	2	41	655536	KEY/WOODRUFF 3/8 X 1-1/4	2
19	143906	SHAFT/DRIVE	1	42	655537	KEY/WOODRUFF 5/16 X 1-1/4	2
20	143916	CHAIN/ROLLER #80X52	1	43	653026	HN 3/4	4
21	144477	BRACKET	1				

a) NOT serviced as an assembly. See parts breakdown on page 29.

1330TM - OPTIONS & ACCESSORIES

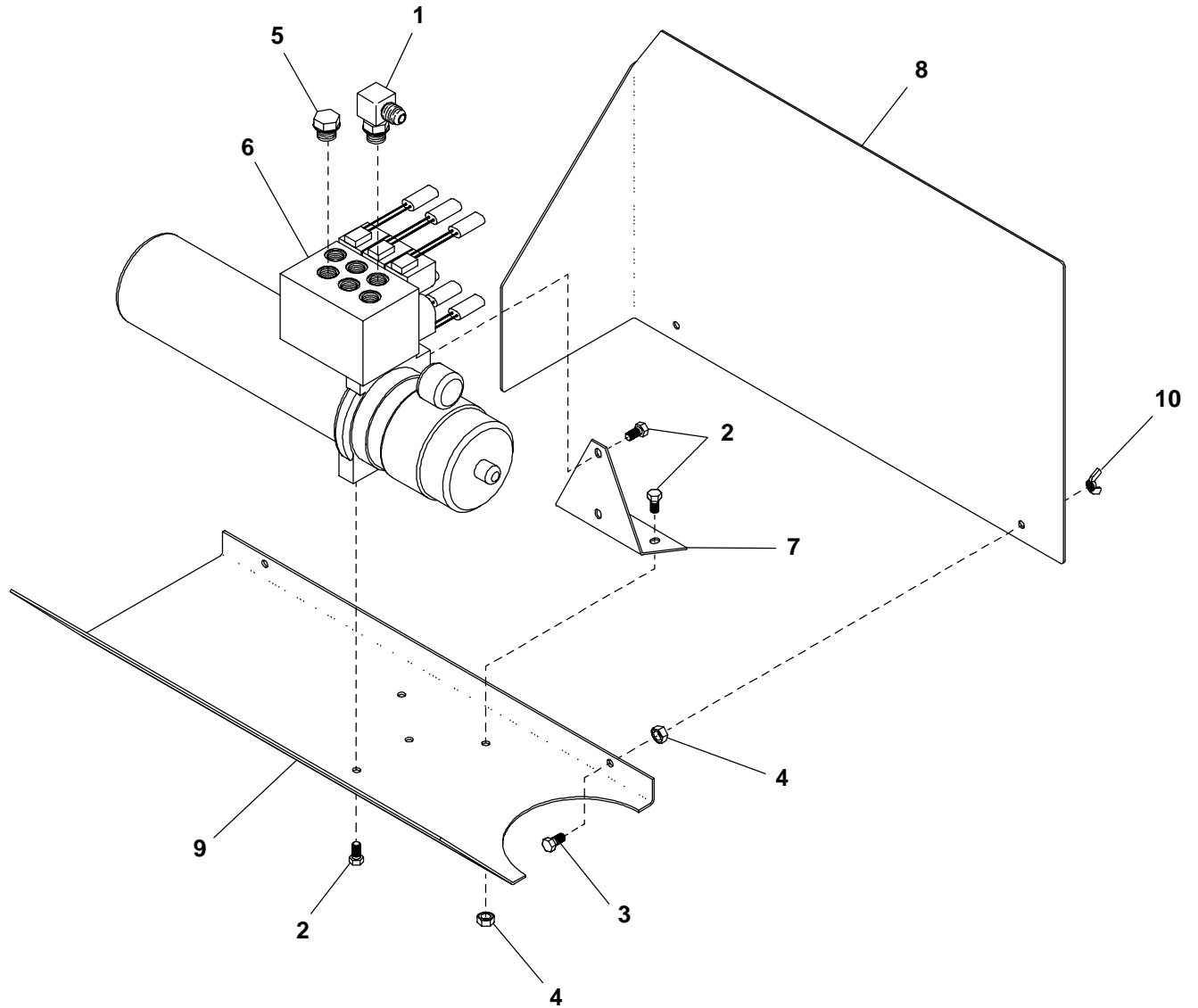
2:1 Mechanical Drive Transmission



Ref. No.	Part No.	Description	Qty. Req.	Ref. No.	Part No.	Description	Qty. Req.
	120579	TRANSMISSION/2:1	1	16	144861	CONE/BEARING	2
		CONSISTS OF:		17	650224	SHSS 1/2 X 3/4	6
1	144849	CAP/OPEN	1	18	650184	MS 5/16 X 3/4	4
2	144850	PINION/26T	1	19	650525	CS 5/16 X 1-1/4	8
3	144851	COLLAR/LOCK	2	20	650486	CS 5/16 X 3/4	4
4	144852	SLEEVE/1.75	1	21	144862	CS 5/16 X 3-1/4 NF	9
5	144853	PLATE/TORQUE	1	22	144864	CS 5/16 X 3-1/2 NF	1
6	144854	CAP/CLOSED	1	23	144865	CS 5/16 X 4 NF	2
7	144855	GEAR/57T	1	24	651062	HN 5/16 NF	12
8	NS _a	GASKET	1	25	NS _a	BREATHER	1
9	NS _a	GASKET	2	26	NS _a	PLUG	3
10	NS _a	GASKET	6	27	NS _a	PLUG	4
11	144856	HOUSING	1	28	NS _a	SEAL	1
12	144857	HOUSING	1	29	NS _a	SEAL	2
13	144858	CAP/OPEN	2	30	144863 _b	KIT/REPAIR	1
14	144859	BEARING/BALL	2				
15	144860	CUP/BEARING	2				

a) Not Serviced. Part of Repair Kit 144863, Ref. No. 30.
 b) Contains Gaskets, Seals and Plugs necessary for Transmission reassembly.

Hydraulic Control Kit

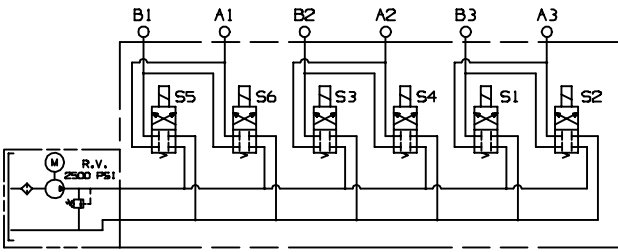


Ref. No.	Part No.	Description	Qty. Req.	Ref. No.	Part No.	Description	Qty. Req.
1	068938	ELBOW/HYD FITTING	4	7	143459	SUPPORT/PUMP	1
2	076588	FLS 3/8 X 3/4	6	8	143496	COVER/SHIELD	1
3	076589	FLS 3/8 X 1	2	9	143497	SHELF/PUMP MOUNT	1
4	090666	FLN 3/8	4	10	653098	NUT/WING 3/8	2
5	122778	PLUG 9/16 O-RING	2				
6	142731 _a	PUMP-MANIFOLD/ASSY	1				

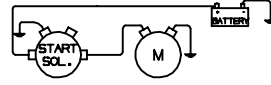
a) See following page for further breakdown.

1330TM - OPTIONS & ACCESSORIES

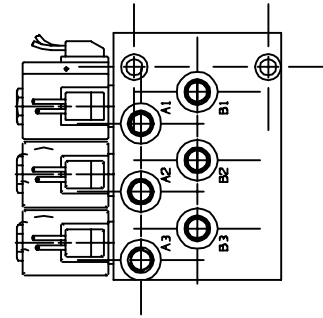
Pump-Manifold Assembly



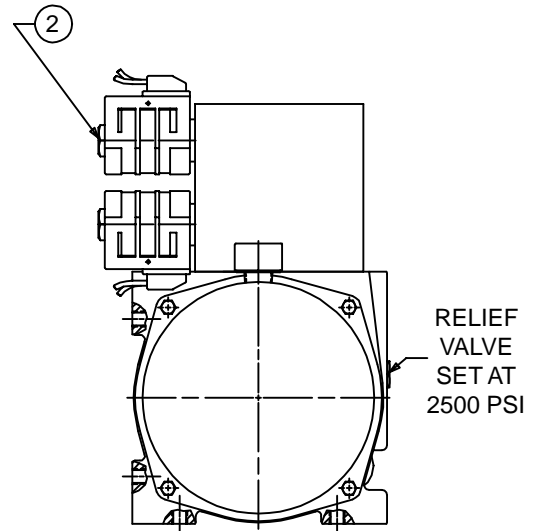
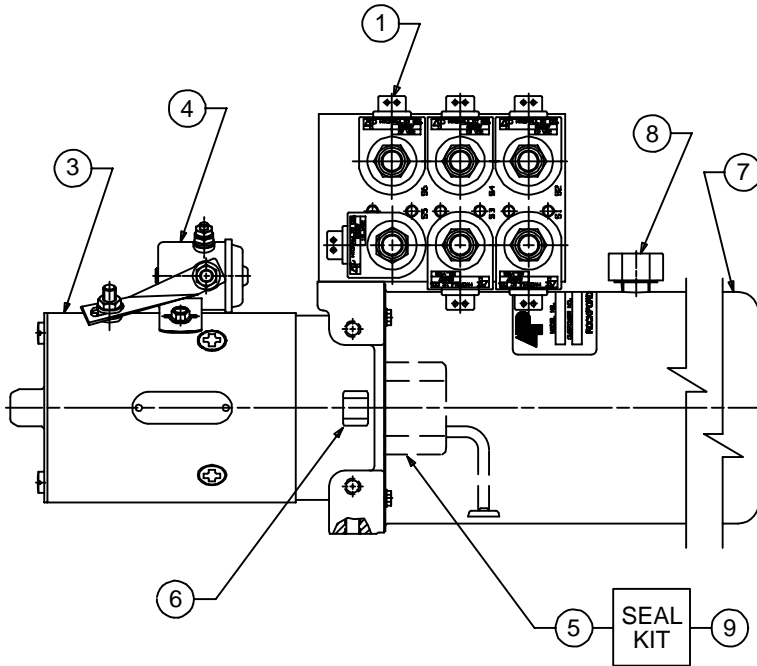
HYDRAULIC SCHEMATIC



WIRE SCHEMATIC

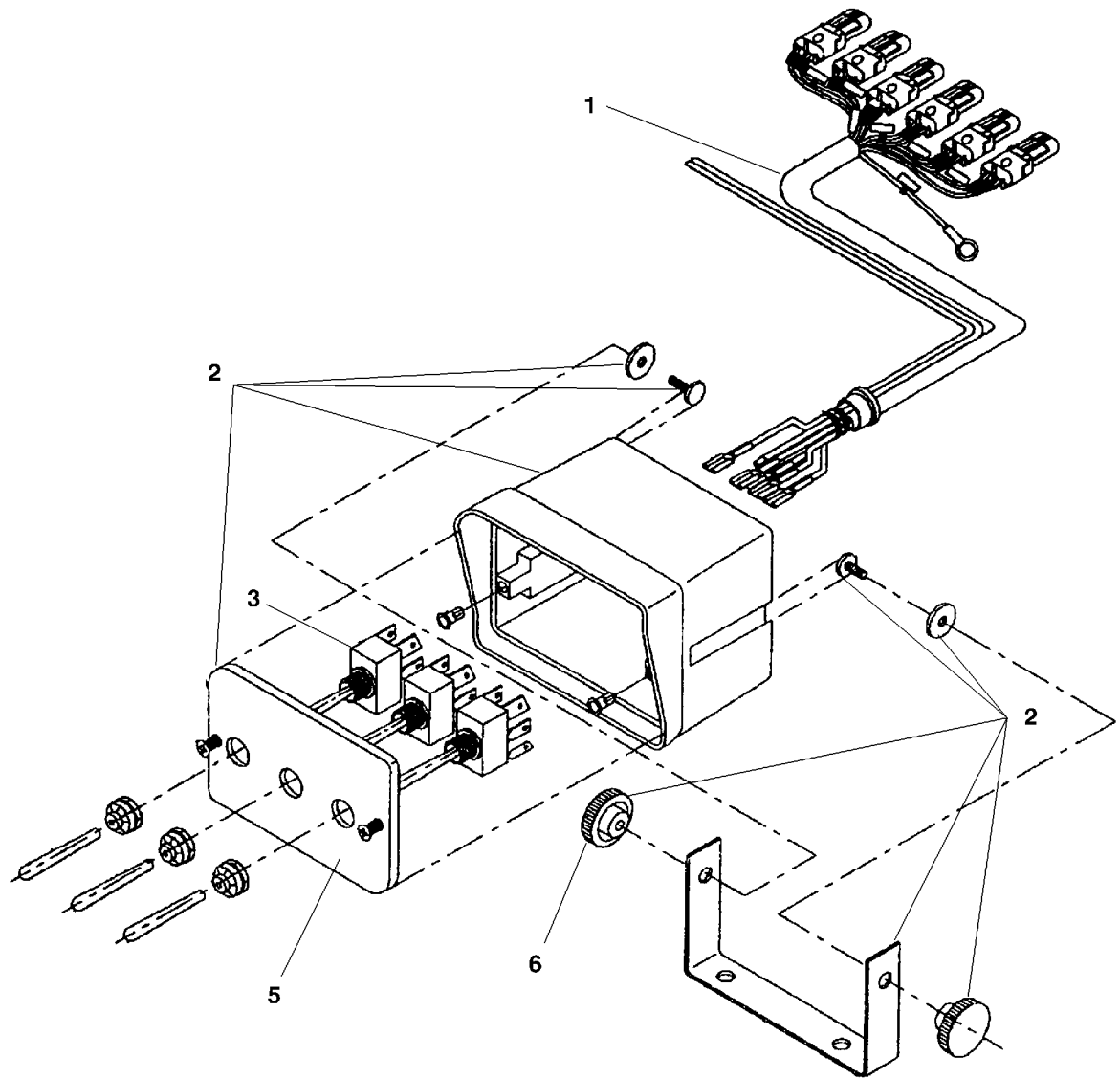


2488 MANIFOLD ASSY



Ref. No.	Part No.	Description	Qty. Req.	Ref. No.	Part No.	Description	Qty. Req.
1	143637	COIL/W CONNECTOR	6	6	143966	COUPLING/PUMP MOTOR	1
2	143962	VALVE/CARTRIDGE	6	7	143968	RESERVOIR	1
3	143963	MOTOR/DC	1	8	143969	BREATHER	1
4	143964	SOLENOID/MOTOR	1	9	143970	KIT/PUMP SEAL	1
5	143965	PUMP ASSY	1				

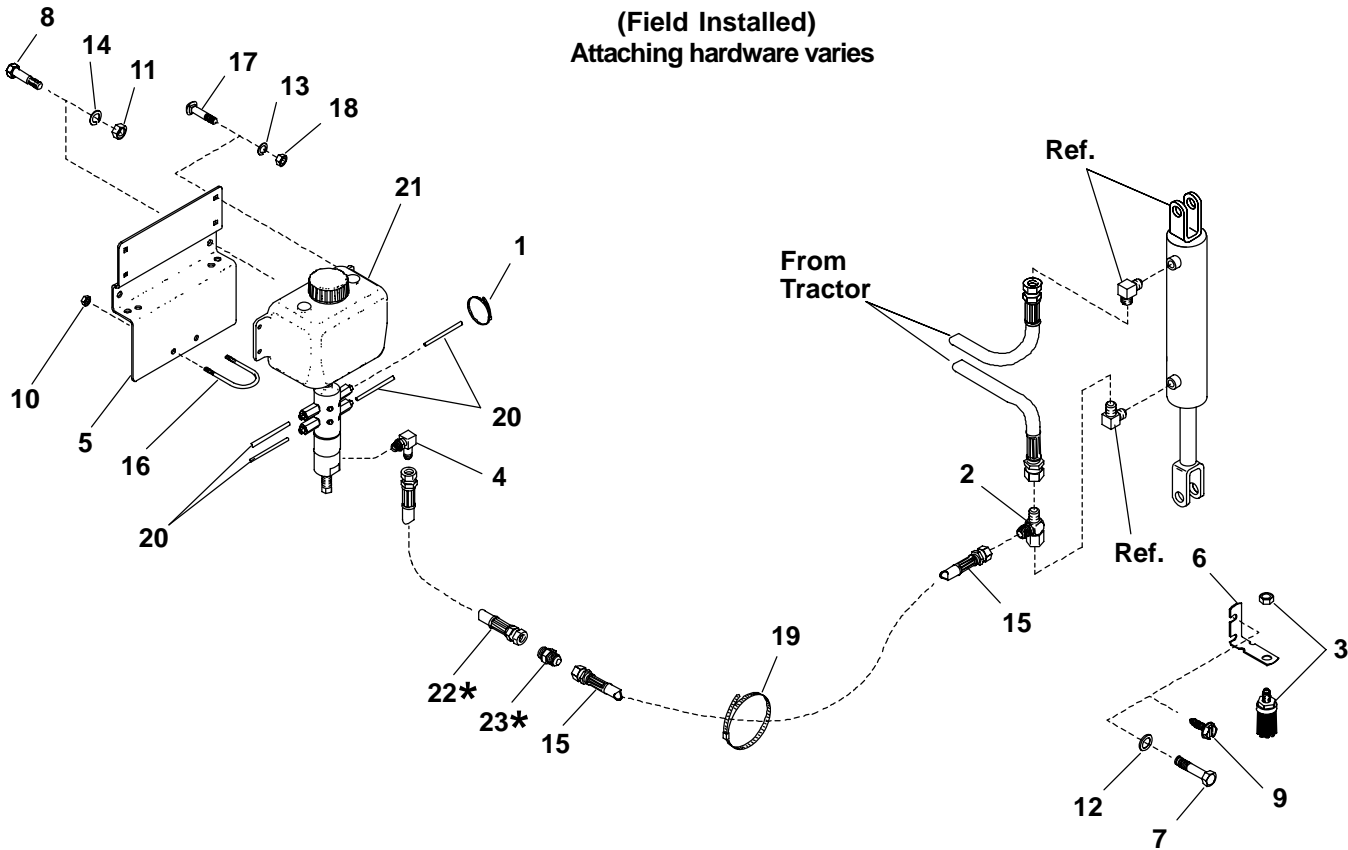
Hydraulic Control Kit Control Box



Ref. No.	Part No.	Description	Qty. Req.	Ref. No.	Part No.	Description	Qty. Req.
1	143428	HARNESS/VALVE CONTROL	1	4	143834	CIRCUIT BREAKER/10 AMP	1
2	143832	HOUSING/CONTROL BOX	1			(NOT SHOWN)	
3	143833	SWITCH/35 AMP TOGGLE	3	5	143835	DECAL/FACE PLATE	1
				6	143967	KNOB/1/4-20 FEMALE	2

1330TM - OPTIONS & ACCESSORIES

158510 Chain Oiler (Field Installed) Attaching hardware varies



Ref. No.	Part No.	Description	Qty. Req.	Ref. No.	Part No.	Description	Qty. Req.
1	055648	TIE/WIRE	8	14	654026	LW 3/8	4
2	072806	TEE/HYD FITTING	1	15	158729	HOSE/ASSY - 54"	1
3	091210	BRUSH/ASSY	4	16	158006	U-BOLT	1
5	156893	BRACKET	1	17	650758	CB 1/4X3/4	4
6	157982	BRACKET	4	18	653005	HN 1/4	4
7	650487	CS 5/16X1	1	19	079340	TIE/NYLON	2
8	650491	CS 3/8X1-1/4	4	20	158379	TUBE/NYLON 360	1
9	650510	TCS 5/16X1/2	3	21	158007 _a	LUBEMINDER SYSTEM	1
10	653007	HN 5/16	3	22	158730 _b	HOSE/ASSY - 24"	1
11	653010	HN 3/8	4	23	230-17076 _b	UNION/HYD FITTING	1
12	654004	FW 5/16	2				
13	654022	LW 1/4	7				

a) See following page for further breakdown.

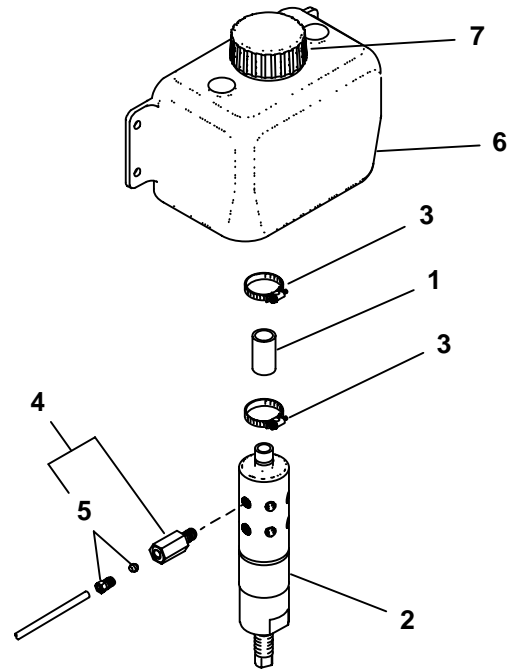
b) Use as required on certain models.

1309/1312/1315/1322 - OPTIONS & ACCESSORIES

158007 Lubeminder System

Ref. No.	Part No.	Description	Qty. Req.
1	091213	TUBE	1
2	158044	PUMP	1
3	420-21748	CLAMP	2
4	119564	MANIFOLD	4
5	119565 _a	KIT/VALVE	4
6	091209	TANK/OIL	1
7	112269	CAP/OIL TANK	1

a) Kit contains four sleeve nuts and four ferrules.



Index

A

Auger, 19

C

Chain Oiler, 36–37
Component Breakdowns
 Auger, 19
 Gearbox, 20
 Hydraulic Cylinders, 18

D

Decal Application, 2
Decal Locations, 2–4
Decal Set and list, 2

F

Fenders, 27

G

Gearbox, 20

H

Hydraulic Control Kit, 33
 Pump-Manifold Assembly, 34
Hydraulic Control Kit Control
 Box, 35
Hydraulic Cylinders, 18
Hydraulic Lid Kit, 24

L

Light Kit, 26

M

Mechanical Drive Kit (1:1), 28
Mechanical Drive Kit (2:1), 30–31
Mechanical Drive PTO
 (1:1 & 2:1), 29
Mechanical Drive Transmission
 (2:1), 32
Mechanical Transmission (2:1), 32
Mud Flaps, 27

O

Options & Accessories
 1:1 Mechanical Drive Kit, 28
 2:1 Mechanical Drive Kit, 30
 Chain Oiler, 36–37
 Fenders, 27
 Hydraulic Control Kit, 33
 Pump-Manifold Assembly, 34
 Hydraulic Lid Kit, 24
 Light Kit, 26
 Mud Flaps, 27
 Solids Spill Guards, 22
 Splash Guards & Rails, 23

P

Paint Notice, 2

S

Solids Spill Guards, 22
Splash Guards & Rails, 23

1330TM - NUMERICAL INDEX

Part No.	Page No.	Ref. No.	Part No.	Page No.	Ref. No.	Part No.	Page No.	Ref. No.	Part No.	Page No.	Ref. No.
H7119	28	1	072806	36	2	083284	21	3	093653	2	11
B11433A	11	1	072901	25	15	083285	21	21	093872	31	14
R13216	13	1	073788	18	5	083288	21	10	094164	15	16
M12215	28	2	074090	25	5	083289	11	16	094474	13	7
M12215	31	1	074091	15	9	083289	21	31	094842	9	12
R13216	31	2	075105	9	6	083666	28	6	094912	2	12
006989	11	3	075274	17	3	083666	31	10	094913	2	13
009477	31	3	076056	26	10	083669	21	38	094951	2	14
018453	15	1	076082	28	5	087107	15	14	095026	11	18
018453	25	14	076082	31	6	088749	9	11	095027	11	19
042858	21	32	076099	15	10	088904	15	15	095145	15	17
045660	31	4	076373	13	4	089689	18	2	095146	25	4
045668	21	24	076581	15	11	089690	18	4	095150	15	18
053894	9	1	076588	33	2	089693	18	1	095151	15	19
053894	11	2	076589	33	3	090666	33	4	097530	28	8
053894	28	3	077969	25	16	091209	37	6	098088	9	13
054994	15	2	078580	17	4	091210	36	3	098214	21	14
055021	15	3	079098	15	12	091213	37	1	099242	11	20
055648	36	1	079340	36	19	091444	2	2	099242	21	44
056080	15	4	080247	2	19	091899	17	7	099242	28	10
056230	21	30	080605	11	50	091918	11	17	099979	23	1
056640	11	52	080629	15	13	091918	21	43	099980	23	2
056640	21	41	080646	11	7	091918	28	7	110022	28	11
057557	11	4	080834	11	8	092587	25	1	110023	28	12
057655	25	17	080845	21	20	092593	25	6	110219	26	9
059272	17	1	080846	11	9	092665	17	8	110412	26	5
059566	21	11	081135	11	10	092674	31	11	110413	26	7
061848	9	4	081135	31	8	092803	25	8	110414	26	8
064331	11	5	081380	13	5	092804	25	7	110415	26	2
064331	21	45	081380	17	6	092805	25	10	110416	26	4
064331	28	4	082010	13	6	092806	25	18	110417	27	1
064673	25	11	082022	11	11	092808	25	2	110418	27	2
067847	21	28	083228	9	7	092809	25	3	110420	27	3
068642	17	2	083231	25	12	092810	25	9	110421	27	1
068938	15	5	083250	25	20	092811	25	9	110422	26	6
068938	33	1	083252	9	8	092812	25	5	110423	26	1
070856	9	5	083254	11	12	092813	25	13	110768	31	12
070856	25	14	083255	9	9	092814	25	21	110781	31	13
071105	26	3	083256	9	10	093020	2	3	111347	23	3
071700	15	6	083259	11	13	093208	2	4	111421	17	9
071701	15	7	083281	11	14	093366	2	5	112137	23	4
071701	31	5	083281	21	22	093367	2	6	112269	37	7
071703	11	6	083281	31	9	093373	2	7	113034	21	37
071703	13	2	083282	21	19	093457	2	8	114824	15	23
071703	15	8	083283	11	15	093638	2	9	115607	15	24
071706	13	3	083283	21	12	093639	2	10	115628	2	15
									115776	29	5

1330TM - NUMERICAL INDEX

Part No.	Page No.	Ref. No.	Part No.	Page No.	Ref. No.	Part No.	Page No.	Ref. No.	Part No.	Page No.	Ref. No.
115777	29	4	120733	15	21	143916	28	17	500195	11	32
117255	31	7	120740	2	17	143916	31	20	500195	28	20
118036	11	51	120742	13	14	143930	28	18	510114	29	2
118757	15	25	120747	28	14	143962	33	2	520194	13	17
119257	15	26	120751	13	15	143963	33	3	520194	31	23
119258	15	27	122736	2	21	143964	33	4	520195	13	18
119355	15	20	122778	33	5	143965	33	5	520195	31	24
119532	17	35	122892	28	15	143966	33	6	570000	11	33
119533	17	36	122892	31	18	143967	35	6	570002	13	19
119564	37	4	128015	11	30	143968	33	7	570002	28	21
119565	37	5	128372	18	3	143969	33	8	570002	31	25
119665	17	37	129829	18	1	143970	33	9	570004	29	2
119666	17	38	129831	18	3	143993	28	19	570005	21	34
119694	15	28	129834	18	4	144477	31	21	580052	25	19
120240	13	8	141247	13	16	144733	29	3	601155	11	34
120242	31	15	141249	2	18	144803	29	1	601237	11	35
120245	13	9	141257	22	3	144849	32	1	603884	15	22
120249	13	10	141258	22	1	144850	32	2	606465	11	36
120291	17	14	141259	22	2	144851	32	3	606541	21	18
120331	11	21	141269	19	2	144852	32	4	606662	11	37
120332	11	22	141270	19	3	144853	32	5	606663	11	38
120334	9	14	141782	9	20	144854	32	6	606672	21	33
120339	11	23	141811	17	15	144855	32	7	606673	21	29
120399	2	16	142097	17	16	144856	32	11	606676	9	21
120341	11	24	142098	17	17	144857	32	12	606678	21	7
120344	11	25	142102	17	18	144858	32	13	650019	15	30
120347	11	26	142301	9	33	144859	32	14	650184	32	18
120362	15	29	142302	9	2	144860	32	15	650212	28	22
120527	9	15	142303	9	32	144861	32	16	650212	31	26
120531	9	16	142368	17	19	144862	32	21	650221	9	22
120532	9	17	142371	17	20	144863	32	30	650224	31	27
120539	11	27	142373	17	21	144864	32	22	650224	32	17
120544	13	11	142731	33	6	144865	32	23	650307	11	39
120562	28	13	143353	21	1	145216	2	1	650486	32	20
120579	31	16	143366	17	22	145217	2	20	650487	36	7
120579	32	0	143428	35	1	156893	36	5	650490	9	23
120587	13	12	143459	33	7	157123	17	10	650490	13	20
120590	9	19	143496	33	8	157711	17	11	650490	15	31
120590	19	1	143497	33	9	157982	36	6	650490	17	23
120593	19	4	143637	34	1	158006	36	16	650490	23	5
120594	19	5	143832	35	2	158007	36	21	650490	27	1
120600	9	18	143833	35	3	158044	37	2	650490	27	2
120604	11	28	143834	35	4	158379	36	20	650490	28	23
120615	11	29	143835	35	5	158729	36	15	650490	31	28
120615	31	17	143906	31	19	158730	36	22	650491	21	25
120725	13	13	143911	28	16	170938	17	12	650491	36	8
									650492	11	40

1330TM - NUMERICAL INDEX

Part No.	Page No.	Ref. No.	Part No.	Page No.	Ref. No.	Part No.	Page No.	Ref. No.	Part No.	Page No.	Ref. No.
650495	11	41	651069	25	3	654004	36	12	654034	11	48
650495	13	21	651090	11	42	654006	11	45	655008	31	40
650510	36	9	651100	13	25	654006	13	28	655016	9	30
650525	32	19	651113	21	4	654006	15	34	655016	17	29
650526	25	8	651148	31	33	654006	17	26	655020	11	49
650533	27	1	651187	9	25	654006	21	26	655020	25	9
650533	27	3	651292	11	43	654006	22	6	655020	25	9
650540	23	6	651292	21	42	654006	23	8	655022	15	35
650553	13	23	651292	28	26	654009	13	29	655536	28	32
650569	13	22	651456	17	34	654009	17	27	655536	31	41
650569	21	15	653005	36	18	654014	9	27	655537	28	33
650569	31	29	653007	36	10	654022	36	13	655537	31	42
650579	31	30	653010	9	26	654026	9	28	660004	21	2
650584	17	13	653010	13	26	654026	13	30	660044	21	23
650590	17	24	653010	17	25	654026	17	28	804578	26	0
650647	28	24	653010	22	5	654026	22	7	804580	27	0
650647	31	31	653010	23	7	654026	23	9	804687	25	0
650692	15	32	653010	31	34	654026	28	29	804848	27	0
650702	26	2	653010	36	11	654026	31	37	806885	31	0
650702	26	5	653015	21	6	654026	36	14	807121	28	0
650702	26	7	653018	13	27	654028	21	5	900084	17	30
650702	26	8	653018	21	17	654030	11	46	900084	21	39
650704	22	4	653018	28	27	654030	13	31	210-19470	13	32
650733	31	32	653018	31	35	654030	21	16	210-19470	17	31
650758	36	17	653021	11	44	654030	28	30	210-19530	13	33
650773	9	24	653021	28	28	654030	31	38	220-10238	17	32
650786	13	24	653021	31	36	654032	11	47	230-17076	36	23
650815	17	5	653026	31	43	654032	28	31	380-13297	13	34
650834	28	25	653098	33	10	654032	31	39	420-19509	17	33
651062	32	24	654002	15	33	654034	9	29	420-21748	37	3
651069	25	2									

1330TM - NUMERICAL INDEX

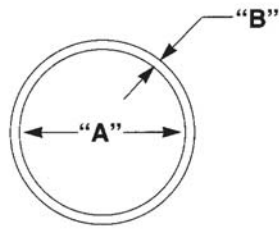
Part No.	Page No.	Ref. No.	Part No.	Page No.	Ref. No.	Part No.	Page No.	Ref. No.	Part No.	Page No.	Ref. No.
-------------	-------------	-------------	-------------	-------------	-------------	-------------	-------------	-------------	-------------	-------------	-------------

NOTES

Part No.	Page No.	Ref. No.	Part No.	Page No.	Ref. No.	Part No.	Page No.	Ref. No.	Part No.	Page No.	Ref. No.
----------	----------	----------	----------	----------	----------	----------	----------	----------	----------	----------	----------

NOTES

O-RING TABLE



FITTING THREAD SIZE	DIAMETER "A"	DIAMETER "B"	GEHL PART NUMBER
9/16 - 18	0.468	0.078	055897
3/4 - 16	0.644	0.087	055896
7/8 - 14	0.755	0.097	055898
1-1/16 - 12	0.924	0.116	048953
1-5/16 - 12	1.171	0.116	058674
1-5/8 - 12	1.475	0.118	077970

Recommended Coupling & Adapter Installation Torque Specifications

For SAE "O" Ring Boss (Steel)

Size		Ft-Lbs (N·m)	
Dash	Fractional (In.)	Minimum	Maximum
-3	3/16	8 (11)	10 (14)
-4	1/4	14 (19)	16 (22)
-5	5/16	18 (24)	20 (27)
-6	3/8	24 (33)	26 (35)
-8	1/2	50 (68)	60 (81)
-10	5/8	72 (98)	80 (108)
-12	3/4	125 (169)	135 (183)
-14	7/8	160 (217)	180 (244)
-16	1	200 (271)	220 (298)
-20	1-1/4	210 (285)	280 (380)
-24	1-1/2	270 (366)	360 (488)







For JIC 37° and 45° (Machined or Flared)

Steel			
Size		Ft-Lbs (N·m)	
Dash	Fractional (In.)	Minimum	Maximum
-4	1/4	10 (14)	11 (15)
-5	5/16	13 (18)	15 (20)
-6	3/8	17 (23)	19 (26)
-8	1/2	34 (46)	38 (52)
-10	5/8	50 (68)	56 (76)
-12	3/4	70 (95)	78 (106)
-16	1	94 (127)	104 (141)
-20	1-1/4	124 (168)	138 (187)
-24	1-1/2	156 (212)	173 (235)
-32	2	219 (297)	243 (330)

TORQUE SPECIFICATIONS

NOTE: Use these torque values when tightening **GEHL** hardware (excluding: locknuts and self-tapping, thread forming and sheet metal screws) unless specified otherwise.

All torque values are in Lb-Ft, except those marked with an *, which are Lb-In.
(For metric torque value Nm, multiply Lb-Ft value by 1.355 or Lb-In value by 0.113)

Unified National Thread	Grade 2 		Grade 5 		Grade 8 	
	Dry	Lubed	Dry	Lubed	Dry	Lubed
8-32 8-36	19* 20*	14* 15*	30* 31*	22* 23*	41* 43*	31* 32*
10-24 10-32	27* 31*	21* 23*	43* 49*	32* 36*	60* 68*	45* 51*
1/4-20 1/4-28	66* 76*	50* 56*	9 10	75* 86*	12 14	9 10
5/16-18 5/16-24	11 12	9	17 19	13 14	25	18 20
3/8-16 3/8-24	20 23	15 17	30 35	23 25	45 50	35
7/16-14 7/16-20	32 36	24 27	50 55	35 40	70 80	55 60
1/2-13 1/2-20	50 55	35 40	75 90	55 65	110 120	80 90
9/16-12 9/16-18	70 80	55 60	110 120	80 90	150 170	110 130
5/8-11 5/8-18	100 110	75 85	150 180	110 130	220 240	170 180
3/4-10 3/4-16	175 200	130 150	260 300	200 220	380 420	280 320
7/8-9 7/8-14	170 180	125 140	430 470	320 360	600 660	460 500
1-8 1-14	250 270	190 210	640 710	480 530	900 1000	680 740
Metric Course Thread	Grade 8.8 		Grade 10.9 		Grade 12.9 	
	Dry	Lubed	Dry	Lubed	Dry	Lubed
M6-1	8	6	11	8	13.5	10
M8-1.25	19	14	27	20	32.5	24
M10-1.5	37.5	28	53	39	64	47
M12-1.75	65	48	91.5	67.5	111.5	82
M14-2	103.5	76.5	145.5	108	176.5	131
M16-2	158.5	117.5	223.5	165.5	271	200

GEHL®

Gehl Company 143 Water Street, P.O. Box 179, West Bend, WI 53095-0179, U.S.A.
www.gehl.com