

GEHL®

Form No.
918180
Revision B
October 2009

Compact Excavator

Attachments



Parts Manual

INTRODUCTION

When ordering service parts, specify the correct part number, full description, quantity required and the unit model number and serial number. For your safety and continued proper operation, use only genuine GEHL service parts.

The model and serial number for the unit are on a tag located on a panel on the front of the cab.

"Right" and "left" are determined from a position sitting on the operator's seat and facing forward.

GEHL Company reserves the right to make changes or improvements in the design or construction of any part of the unit without incurring the obligation to install such changes on any previously delivered units.

Refer to the abbreviations table located on this page for special parts descriptions. Standard attaching hardware torque values are also provided near the back of this manual. Metric torque values shown in the illustrations are in Newton-meters and are converted to foot-pounds by multiplying by 0.738.

Specific reference numbers, indicating a complete assembly, are circled in some illustrations. A small bag, pictured in some illustrations, indicates a seal kit (seals, o-rings, etc.). In the exploded view parts list, additional information may follow the Reference Number.

Unless otherwise specified, all cap screws and bolts are Grade 8.8, cadmium or zinc plated.

NOTE: *The following abbreviations may be used herein:*

ASSD	Assembled
ASY	Assembly
ASSY	Assembly
AR.....	As Required
CB	Carriage Bolt
CP	Cotter Pin
CS	Cap Screw (Hexagon Head)
CYL	Cylinder
DIA	Diameter
FHCS	Flat Head Cap Screw
GR.....	Grade
HB.....	Hex Bolt
HLN	Hex Lock Nut
HN.....	Hex Nut
HP	High Pressure
HYD.....	Hydraulic
INS	Insert
LH.....	Left Hand
LN.....	Lock Nut
LT	Left
LW	Lock Washer
M.....	Meter or Meters
MM/mm.....	Millimeter
NPT	National Pipe Threaded
NSS	Not Sold Separately
RH.....	Right Hand
RT	Right
SHCS	Socket Head Cap Screw
SLTD.....	Slotted
SN	Serial Number or Slotted Nut
SQ	Square
W/	With

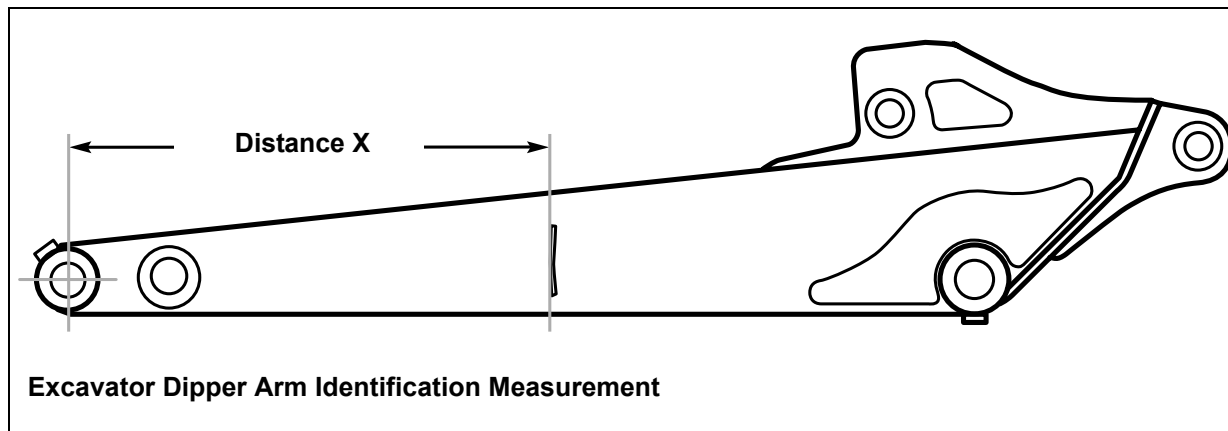
TABLE OF CONTENTS

Introduction.....	1
Table of Contents.....	2
Dipper Arm Identification	6
Bucket Geometry	7
Auxiliary Hydraulic Coupler Identification.....	8
General-Purpose Buckets.....	9
Models 142, 152	9
Model 253	10
Models 272, 292, 342, 362	11
Models 753Z, 802, 803	12
Heavy-Duty Buckets.....	13
Models 153, 192, 193, 222, 223	13
Werk Brau Heavy-Duty Buckets	14
Models 303, 353, 373, 383Z.....	14
Models 502, 503Z, 602, 652, 603	15
Models 753Z, 802, 803	16
Model 1202	17
Ditching Buckets.....	18
All Models	18
Swivel Buckets	20
Models 142, 152	20
Swivel Buckets	21
Models 153, 192, 193, 222, 223, 253	21
Swivel Buckets	22
Models 272, 292, 342, 362	22
Swivel Buckets	23
Models 303, 353, 373, 383Z.....	23
Swivel Buckets	24
Models 502, 503Z, 602, 603, 652	24
Models 753Z, 802, 803	25
Swivel Buckets	25
Swivel Bucket Cylinders	26
Models 142, 152, 153, 192, 193, 222, 223, 253	26
Models 272, 292, 303, 342, 353, 373, 383Z.....	27
Swivel Bucket Cylinders	27
Models 502, 503Z, 602, 603, 652	28
Swivel Bucket Cylinders	28
Hydraulic Thumb.....	29
Models 153, 223	29
Swivel Bucket Cylinders	29
Hydraulic Thumb.....	30
Models 283Z, 303, 353, 373, 383Z.....	30
Swivel Bucket Cylinders	30
Hydraulic Thumb.....	31
Models 503Z, 603	31
Swivel Bucket Cylinders	31
Hydraulic Thumb.....	32
Models 753Z, 803	32

TABLE OF CONTENTS

Swivel Bucket Cylinders	32
Hydraulic Thumb	33
Model 1202	33
Swivel Bucket Cylinders	33
Numerical Index	34

DIPPER ARM IDENTIFICATION



Swivel buckets and other attachments require different length hydraulic hoses depending upon the length of the dipper arm. Use the diagram and table on this page to determine dipper arm length.

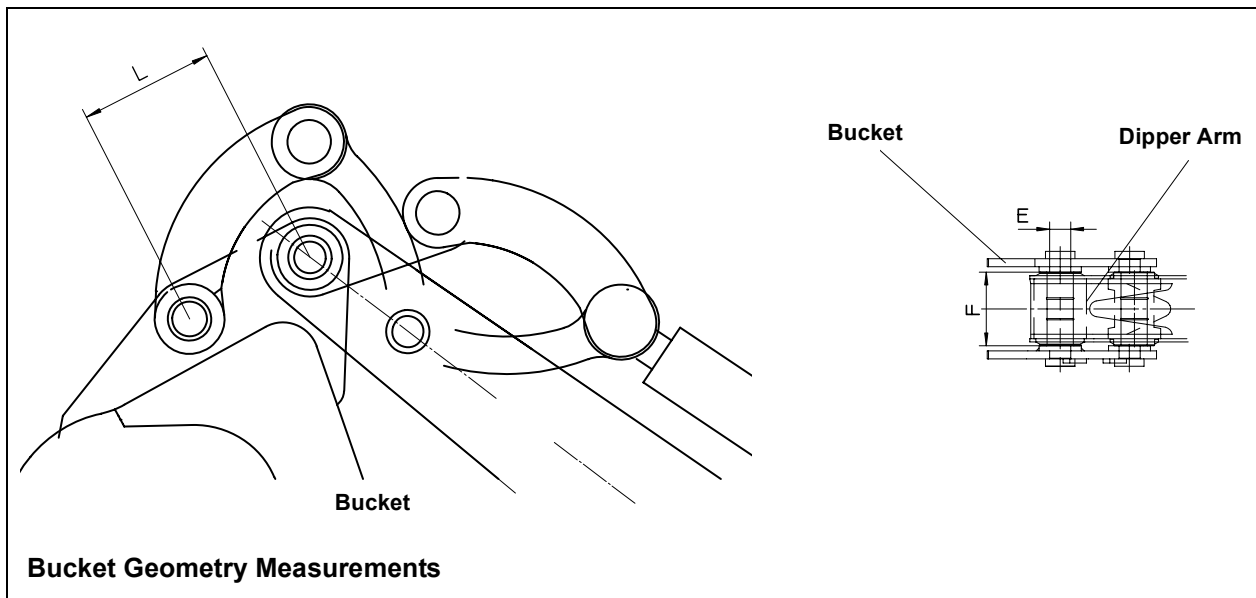
EARLIER DIPPER ARMS

Excavator Model Number	Short Dipper Arm Distance X	Long Dipper Arm Distance X
153	29-3/4" (755 mm)	29-3/4" (755 mm)
223	32-1/2" (825 mm)	32-1/2" (825 mm)
303	22-5/8" (576 mm)	32-1/2" (826 mm)
353	28" (710 mm)	39-3/4" (1010 mm)
373	28" (710 mm)	39-3/4" (1010 mm)
383Z	35" (890 mm)	44-7/8" (1140 mm)
503Z	N/A	48-7/8" (1240 mm)
603	46-1/4" (1175 mm)	58" (1475 mm)
753Z	46-7/8" (1190 mm)	58-5/8" (1490 mm)
803	52-3/4" (1340 mm)	64-1/2" (1640 mm)
12022	51-3/4" (1315 mm)	55-3/4" (1415 mm)

LATER DIPPER ARMS

Excavator Model Number	Short Dipper Arm Distance X	Long Dipper Arm Distance X
153	29-3/4" (755 mm)	29-3/4" (755 mm)
223	32-1/2" (825 mm)	32-1/2" (825 mm)
353	28" (710 mm)	39-3/4" (1010 mm)
373	28" (710 mm)	39-3/4" (1010 mm)
283Z	N/A	44-7/8" (890 mm)
383Z	N/A	44-7/8" (890 mm)
503Z	39" (990 mm)	48-7/8" (990 mm)
603	46-1/4" (1175 mm)	58" (1175 mm)
753Z	46-7/8" (1300 mm)	58-5/8" (1300 mm)
803	52-3/4" (1300 mm)	64-1/2" (1300 mm)
1202	51-3/4" (1315 mm)	55-3/4" (1415 mm)

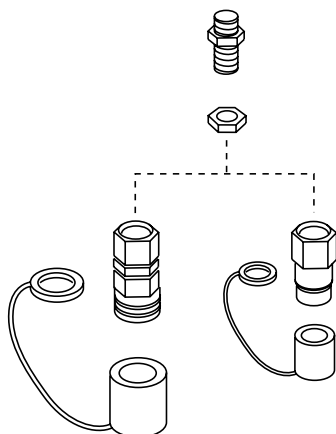
BUCKET GEOMETRY



Excavator Model Number	E - Pin Diameter	F - Dipper Arm Width	L - Bolt Distance Bucket Carrier
142	1.181" (30 mm)	4.252" (108 mm)	4.656" (108 mm)
152	1.181" (30 mm)	4.252" (108 mm)	4.656" (108 mm)
153	1.260" (32 mm)	4.646" (118 mm)	5.098" (129.5 mm)
192	1.260" (32 mm)	4.646" (118 mm)	5.098" (129.5 mm)
193	1.260" (32 mm)	4.646" (118 mm)	5.098" (129.5 mm)
222	1.260" (32 mm)	4.646" (118 mm)	5.098" (129.5 mm)
223	1.260" (32 mm)	4.646" (118 mm)	5.098" (129.5 mm)
253	1.260" (32 mm)	4.646" (118 mm)	5.098" (129.5 mm)
272	1.575" (40 mm)	5.512" (140 mm)	6.122" (155.5 mm)
283Z	1.575" (40 mm)	5.512" (140 mm)	7.087" (180 mm)
292	1.575" (40 mm)	5.512" (140 mm)	6.122" (155.5 mm)
303	1.575" (40 mm)	5.512" (140 mm)	7.087" (180 mm)
342	1.575" (40 mm)	5.512" (140 mm)	6.122" (155.5 mm)
353	1.575" (40 mm)	5.512" (140 mm)	7.087" (180 mm)
373	1.575" (40 mm)	5.512" (140 mm)	7.087" (180 mm)
383Z	1.575" (40 mm)	5.512" (140 mm)	7.087" (180 mm)
373	1.575" (40 mm)	5.512" (140 mm)	7.087" (180 mm)
503Z	1.968" (50 mm)	7.677" (195 mm)	9.291" (236 mm)
502	1.968" (50 mm)	7.677" (195 mm)	9.291" (236 mm)
602	1.968" (50 mm)	7.677" (195 mm)	9.291" (236 mm)
603	1.968" (50 mm)	7.677" (195 mm)	9.291" (236 mm)
652	1.968" (50 mm)	7.677" (195 mm)	9.291" (236 mm)
753Z	2.165" (55 mm)	7.677" (170 mm)	11.811" (300 mm)
802	2.165" (55 mm)	7.677" (170 mm)	11.811" (300 mm)
803	2.165" (55 mm)	7.677" (170 mm)	11.811" (300 mm)
1202	2.362" (60 mm)	8.661" (220 mm)	13.189" (335 mm)

AUXILIARY HYDRAULIC COUPLER IDENTIFICATION

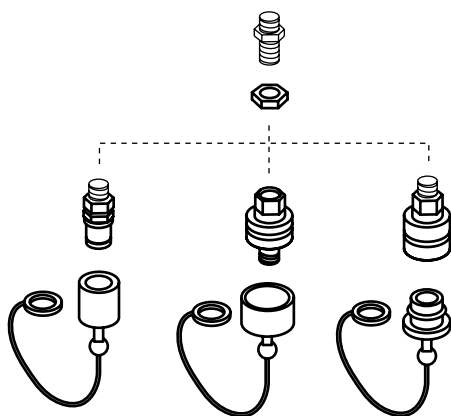
Newer (Flat-Face) Hydraulic Couplers



The auxiliary hydraulic circuit on recent excavators is equipped with flat-face style quick-couplers of this type.

New attachments which use the auxiliary hydraulic circuit (such as swivel buckets) are equipped with quick-coupler fittings which fit this style.

Older (Euro-Style) Hydraulic Couplers



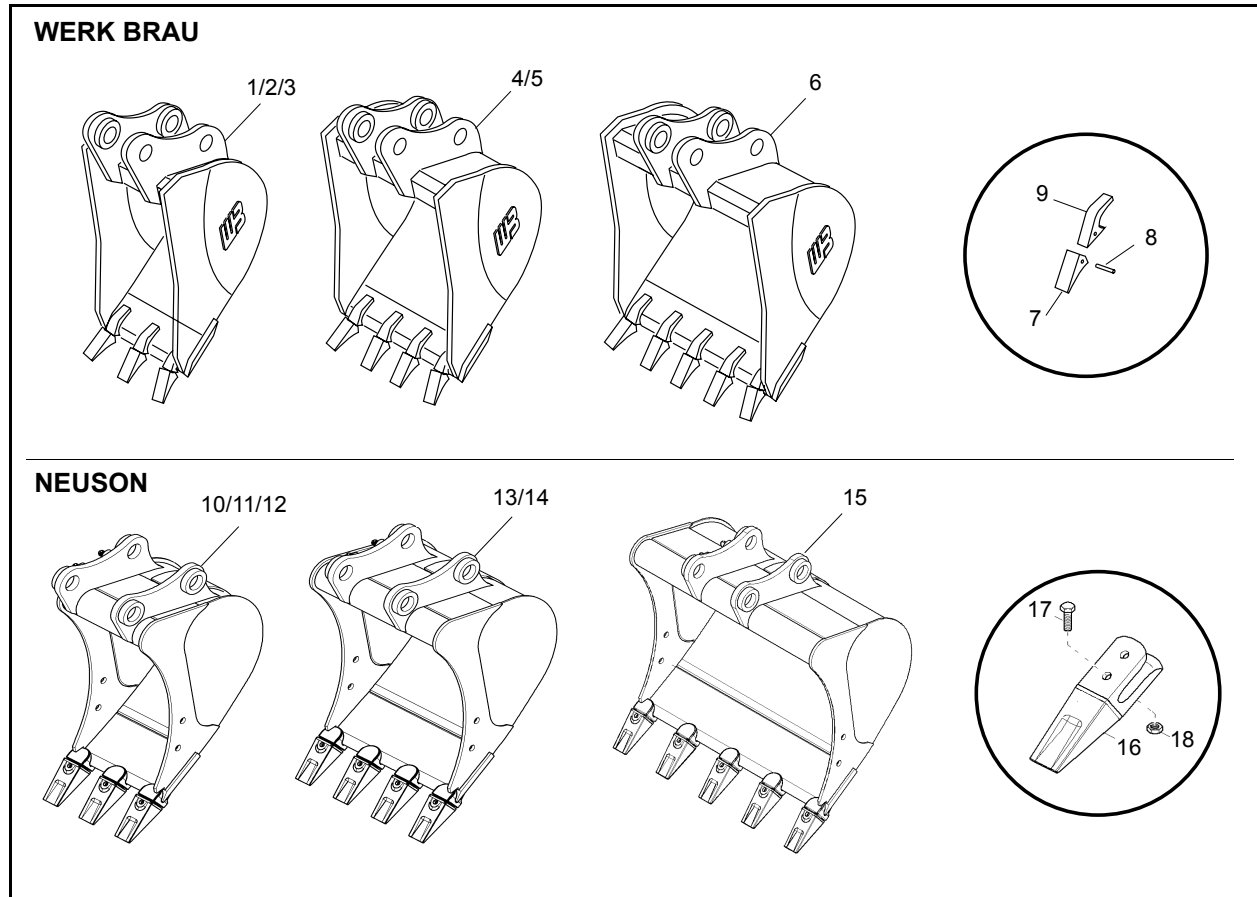
The auxiliary hydraulic circuit on older excavators is equipped with euro-style quick-couplers of this type.

New attachments which use the auxiliary hydraulic circuit (such as swivel buckets) are equipped with flat-faced style quick couplers which do not fit the older euro-style couplers.

When buying new attachments, the euro-style quick-couplers must be replaced with the flat-face style couplers shown above.

MODELS 142, 152

General-Purpose Buckets



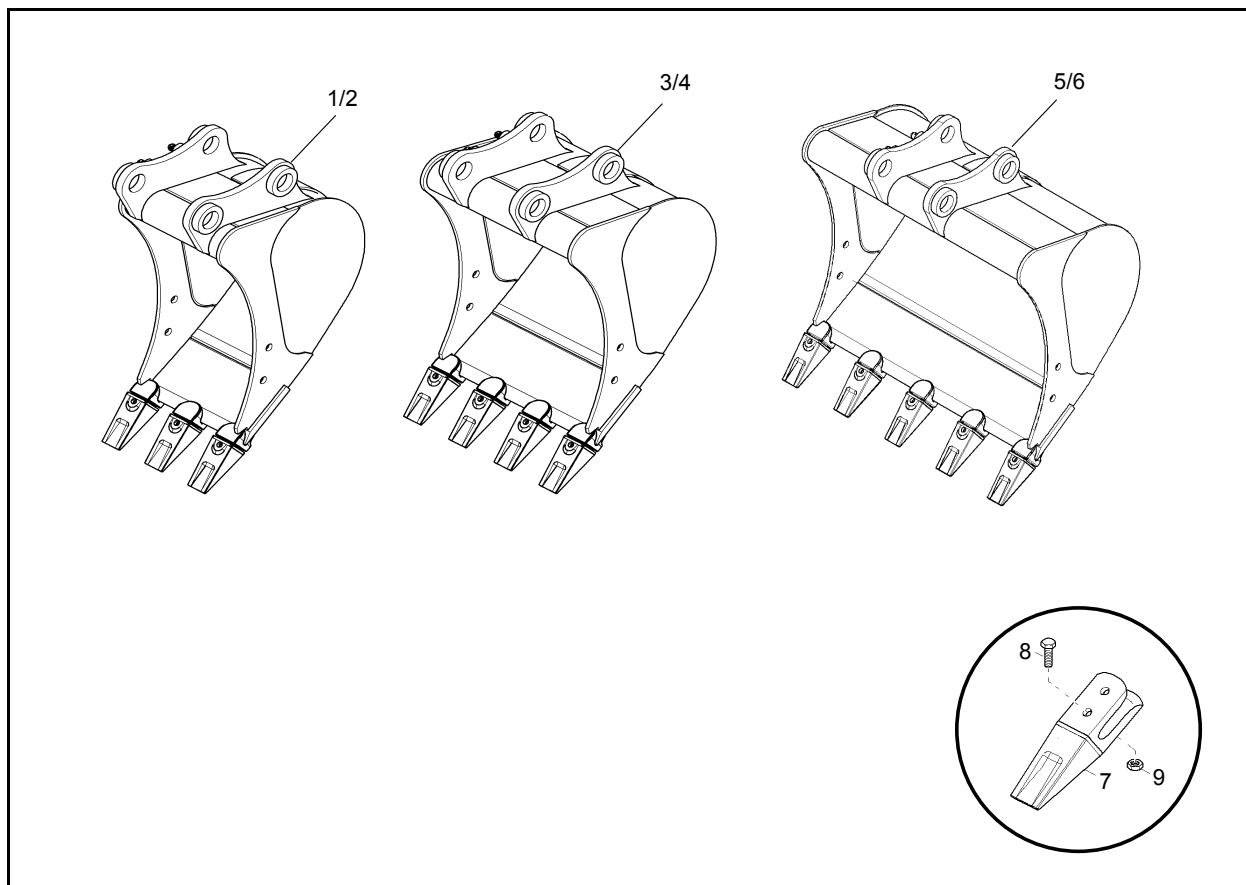
Ref. No.	Part No.	Description	Capacity.
1	807598*	GENERAL-PURPOSE BUCKET (WERK BRAU) 8" (200 MM)	0.6 FT ³ (0.016 M ³)
2	807599*	GENERAL-PURPOSE BUCKET (WERK BRAU) 10" (250 MM)	0.8 FT ³ (0.022 M ³)
3	807600*	GENERAL-PURPOSE BUCKET (WERK BRAU) 12" (300 MM)	1.0 FT ³ (0.028 M ³)
4	807601*	GENERAL-PURPOSE BUCKET (WERK BRAU) 16" (400 MM)	1.2 FT ³ (0.033 M ³)
5	807602*	GENERAL-PURPOSE BUCKET (WERK BRAU) 20" (500 MM)	1.5 FT ³ (0.042 M ³)
6	807603*	GENERAL-PURPOSE BUCKET (WERK BRAU) 24" (600 MM)	1.8 FT ³ (0.005 M ³)
7	207074	BUCKET TOOTH (WERK BRAU)	AS REQ.
8	207084	PIN (WERK BRAU)	AS REQ.
9	207079	SHANK (WERK BRAU)	AS REQ.

Ref. No.	Part No.	Description	Capacity.
10	807598N	GENERAL-PURPOSE BUCKET (NEUSON) 8" (200 MM)	0.6 FT ³ (0.016 M ³)
11	807599N	GENERAL-PURPOSE BUCKET (NEUSON) 10" (250 MM)	0.8 FT ³ (0.022 M ³)
12	807600N	GENERAL-PURPOSE BUCKET (NEUSON) 12" (300 MM)	1.0 FT ³ (0.028 M ³)
13	807601N	GENERAL-PURPOSE BUCKET (NEUSON) 16" (400 MM)	1.2 FT ³ (0.033 M ³)
14	807602N	GENERAL-PURPOSE BUCKET (NEUSON) 20" (500 MM)	1.5 FT ³ (0.042 M ³)
15	807603N	GENERAL-PURPOSE BUCKET (NEUSON) 24" (600 MM)	1.8 FT ³ (0.005 M ³)
16	162466	BUCKET TOOTH (NEUSON)	AS REQ.
17	651409	BOLT (NEUSON)	AS REQ.
18	651450	NUT (NEUSON)	AS REQ.

*Not an orderable part number

MODEL 253

General-Purpose Buckets

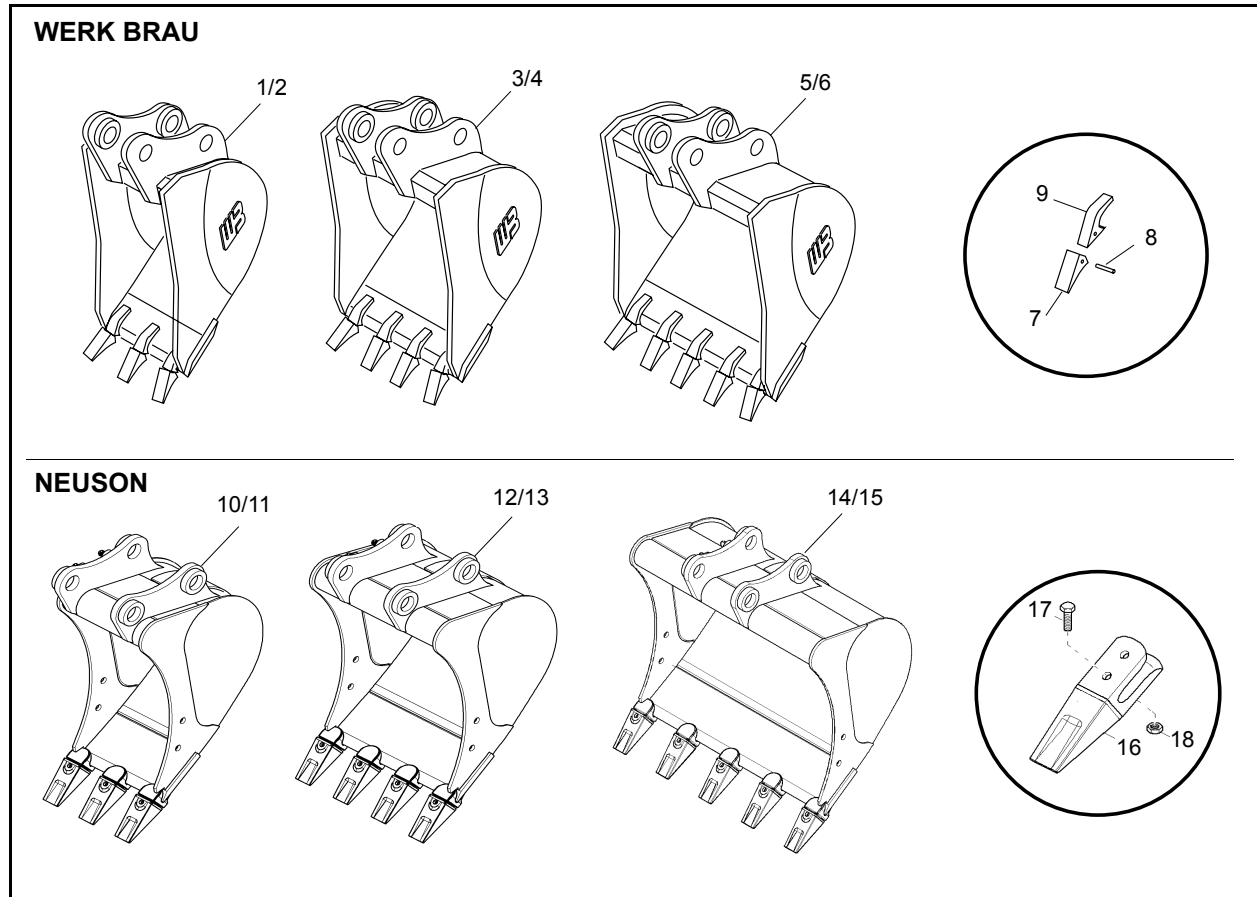


Ref. No.	Part No.	Description	Capacity.
1	808675	GENERAL-PURPOSE BUCKET (NEUSON) 10" (250 MM)	1.3 FT ³ (0.037 M ³)
2	808676	GENERAL-PURPOSE BUCKET (NEUSON) 12" (300 MM)	2.4 FT ³ (0.067 M ³)
3	808677	GENERAL-PURPOSE BUCKET (NEUSON) 16" (400 MM)	3.3 FT ³ (0.093 M ³)
4	808678	GENERAL-PURPOSE BUCKET (NEUSON) 20" (500 MM)	4.7 FT ³ (0.133 M ³)
5	808679*	GENERAL-PURPOSE BUCKET (NEUSON) 24" (600 MM)	6.4 FT ³ (0.181 M ³)
6	808680*	GENERAL-PURPOSE BUCKET (NEUSON) 28" (700 MM)	3.8 FT ³ (0.107 M ³)
7	162466	BUCKET TOOTH	AS REQ.
8	162024	BOLT	AS REQ.
9	656050	NUT	AS REQ.

*Not an orderable part number

MODELS 272, 292, 342, 362

General-Purpose Buckets



Ref. No.	Part No.	Description	Capacity.	Ref. No.	Part No.	Description	Capacity.
1*	808395**	GENERAL-PURPOSE BUCKET (WERK BRAU) 8" (200 MM)	1.4 FT ³ (0.040 M ³)	10*	808395N**	GENERAL-PURPOSE BUCKET (NEUSON) 8" (200 MM)	1.4 FT ³ (0.040 M ³)
2*	807613	GENERAL-PURPOSE BUCKET (WERK BRAU) 12" (300 MM)	2.4 FT ³ (0.067 M ³)	11*	807613N	GENERAL-PURPOSE BUCKET (NEUSON) 12" (300 MM)	2.4 FT ³ (0.067 M ³)
3*	807614**	GENERAL-PURPOSE BUCKET (WERK BRAU) 16" 400 MM)	3.3 FT ³ (0.093 M ³)	12*	807614N	GENERAL-PURPOSE BUCKET (NEUSON) 16" 400 MM)	3.3 FT ³ (0.093 M ³)
4*	807615**	GENERAL-PURPOSE BUCKET (WERK BRAU) 20" (500 MM)	4.7 FT ³ (0.133 M ³)	13*	807615N	GENERAL-PURPOSE BUCKET (NEUSON) 20" (500 MM)	4.7 FT ³ (0.133 M ³)
5*	807616**	GENERAL-PURPOSE BUCKET (WERK BRAU) 24" (600 MM)	6.4 FT ³ (0.181 M ³)	14*	807616N	GENERAL-PURPOSE BUCKET (NEUSON) 24" (600 MM)	6.4 FT ³ (0.181 M ³)
6*	807617**	GENERAL-PURPOSE BUCKET (WERK BRAU) 28" (700 MM)	8.8 FT ³ (0.250 M ³)	15*	807617N	GENERAL-PURPOSE BUCKET (NEUSON) 28" (700 MM)	8.8 FT ³ (0.250 M ³)
7	207074	BUCKET TOOTH (WERK BRAU)	3	16	162466	BUCKET TOOTH (NEUSON)	AS REQ.
8	207084	PIN (WERK BRAU)	3	17	651409	BOLT (NEUSON)	AS REQ.
9	207079	SHANK (WERK BRAU)	3	18	651450	NUT (NEUSON)	AS REQ.

*Requires 2 Connecting links 165731

**Not an orderable part number

